

Nokia 6230i User's Guide

DECLARATION OF CONFORMITY

We, NOKIA CORPORATION declare under our sole responsibility that the product RM-72 is in conformity with the provisions of the following Council Directive: 1999/5/EC.

A copy of the Declaration of Conformity can be found from http://www.nokia.com/phones/declaration_of_conformity/.

CE 0434

Copyright © 2006 Nokia. All rights reserved.

Reproduction, transfer, distribution or storage of part or all of the contents in this document in any form without the prior written permission of Nokia is prohibited.

Nokia, Nokia Connecting People, Xpress-on and Pop-Port are trademarks or registered trademarks of Nokia Corporation. Other product and company names mentioned herein may be trademarks or tradenames of their respective owners.

Nokia tune is a sound mark of Nokia Corporation.

Bluetooth is a registered trademark of Bluetooth SIG, Inc.



Includes RSA BSAFE cryptographic or security protocol software from RSA Security.



Java is a trademark of Sun Microsystems, Inc.

This product is licensed under the MPEG-4 Visual Patent Portfolio License (i) for personal and non-commercial use in connection with information which has been encoded in compliance with the MPEG-4 Visual Standard by a consumer engaged in a personal and non-commercial activity and (ii) for use in connection with MPEG-4 video provided by a licensed video provider. No license is granted or shall be implied for any other use. Additional information including that relating to promotional, internal and commercial uses may be obtained from MPEG LA, LLC. See <<http://www.mpegla.com>>.

Nokia operates a policy of continuous development. Nokia reserves the right to make changes and improvements to any of the products described in this document without prior notice.

Under no circumstances shall Nokia be responsible for any loss of data or income or any special, incidental, consequential or indirect damages howsoever caused.

The contents of this document are provided "as is". Except as required by applicable law, no warranties of any kind, either express or implied, including, but not limited to, the implied warranties of merchantability and fitness for a particular purpose, are made in relation to the accuracy, reliability or contents of this document. Nokia reserves the right to revise this document or withdraw it at any time without prior notice.

The availability of particular products may vary by region. Please check with the Nokia dealer nearest to you.

Export Controls

This device may contain commodities, technology or software subject to export laws and regulations from the US and other countries. Diversion contrary to law is prohibited.

Issue 2

Contents

FOR YOUR SAFETY	7	Settings	25
General information	10	Predictive text input	25
Overview of functions	10	Traditional text input	26
Access codes	10	Tips	26
Security code	10	5. Navigate the menus	28
PIN codes	10	Access a menu function	28
PUK codes	11	List of menu functions	29
Barring password	11	6. Menu functions	31
Wallet code	11	Messages	31
Configuration settings service	11	Text messages (SMS)	31
Nokia support on the Web	12	Multimedia messages	34
1. Get started	13	Multimedia messages memory	
Install the SIM card and the		full	37
battery	13	Folders	37
Install a multimedia card	14	Instant messages	37
Charge the battery	14	E-mail application	44
Switch the phone on and off	15	Voice messages	47
Normal operating position	15	Info messages	47
Change the covers	16	Service commands	47
2. Your phone	17	Delete messages	47
Keys and connectors	17	Message settings	47
Standby mode	18	Contacts	50
Power saving	19	Search for a contact	51
Indicators	19	Save names and phone numbers	51
Shortcuts in the standby mode	20	Save multiple numbers, text	
Keypad lock (keyguard)	20	items, or an image	51
3. Call functions	22	Copy contacts	52
Make a call	22	Edit contact details	52
Speed dialing	22	Delete contacts	52
Answer or reject a call	22	My presence	52
Call waiting	23	Subscribed names	55
Options during a call	23	Business cards	56
4. Write text	25	Speed dials	56
		Voice dialing	57
		Other functions in Contacts	58

Call register	58	Alarm clock	84
Recent calls lists	59	Calendar	84
Counters and timers for calls, data, and messages	59	To-do list	85
Positioning information	59	Notes	85
Settings	59	Wallet	86
Profiles	59	Synchronization	89
Themes	60	Applications	91
Tones	60	Games	91
Display	60	Collection	91
Time and date	61	Calculator	93
My shortcuts	61	Countdown timer	93
Connectivity	62	Stopwatch	94
Call	66	Web	94
Phone	66	Basic steps to access and use services	95
Enhancements	67	Set up browsing	95
Configuration	68	Connect to a service	95
Security	69	Browse pages	96
Restore factory settings	69	Appearance settings	97
Operator menu	70	Cookies	98
Gallery	70	Scripts over secure connection	98
Media	71	Bookmarks	98
Camera	72	Download files	99
Media player	72	Service inbox	99
Music player	73	Cache memory	100
Radio	75	Browser security	100
Voice recorder	76	SIM services	102
Equalizer	77	7. PC connectivity	103
Push to talk	77	PC Suite	103
Push to talk menu	78	(E)GPRS, HSCSD, and CSD	103
Connect to and disconnect from the push to talk service	78	Data communication applications	103
Make and receive a push to talk call	79	8. Battery information	104
Callback requests	80	Charging and Discharging	104
Add a one-to-one contact	81	Nokia Battery Authentication Guidelines (for batteries with Nokia Hologram labels)	105
Create and set up groups	81		
Push to talk settings	83		
Organizer	84		

9. Genuine Enhancements.. 107

Power.....	107
Standard Charger (ACP-7)	107
Travel Charger (ACP-12).....	108
Audio	108
Boom Headset (HDB-4)	108
Stereo Headset (HDS-3)	108
Vehicle.....	108
Mobile Charger (LCH-9)	108

10. Care and maintenance. 109

**11. Additional safety
information..... 110**

Index..... 114

FOR YOUR SAFETY

Read these simple guidelines. Not following them may be dangerous or illegal. Read the complete user guide for further information.



SWITCH ON SAFELY

Do not switch the phone on when wireless phone use is prohibited or when it may cause interference or danger.



ROAD SAFETY COMES FIRST

Obey all local laws. Always keep your hands free to operate the vehicle while driving. Your first consideration while driving should be road safety.



INTERFERENCE

All wireless phones may be susceptible to interference, which could affect performance.



SWITCH OFF IN HOSPITALS

Follow any restrictions. Switch the phone off near medical equipment.



SWITCH OFF IN AIRCRAFT

Follow any restrictions. Wireless devices can cause interference in aircraft.



SWITCH OFF WHEN REFUELLING

Don't use the phone at a refuelling point. Don't use near fuel or chemicals.



SWITCH OFF NEAR BLASTING

Follow any restrictions. Don't use the phone where blasting is in progress.



USE SENSIBLY

Use only in the normal position as explained in the product documentation. Don't touch the antenna unnecessarily.



QUALIFIED SERVICE

Only qualified personnel may install or repair this product.



ENHANCEMENTS AND BATTERIES

Use only approved enhancements and batteries. Do not connect incompatible products.



WATER-RESISTANCE

Your phone is not water-resistant. Keep it dry.



BACK-UP COPIES

Remember to make back-up copies or keep a written record of all important information stored in your phone.



CONNECTING TO OTHER DEVICES

When connecting to any other device, read its user guide for detailed safety instructions. Do not connect incompatible products.



EMERGENCY CALLS

Ensure the phone is switched on and in service. Press the end key as many times as needed to clear the display and return to the start screen. Key in the emergency number, then press the call key. Give your location. Do not end the call until given permission to do so.

■ ABOUT YOUR DEVICE

The wireless device described in this guide is approved for use on the EGSM 900, GSM 1800, and GSM 1900 network. Contact your service provider for more information about networks.

When using the features in this device, obey all laws and respect privacy and legitimate rights of others.



Warning: To use any features in this device, other than the alarm clock, the device must be powered on. Do not switch the device on when wireless device use may cause interference or danger.

■ Network Services

To use the phone you must have service from a wireless service provider. Many of the features in this device depend on features in the wireless network to function. These Network Services may not be available on all networks or you may have to make specific arrangements with your service provider before you can utilize Network Services. Your service provider may need to give you additional instructions for their use and explain what charges will apply. Some networks may have limitations that affect how you can use Network Services. For instance, some networks may not support all language-dependent characters and services.

Your service provider may have requested that certain features be disabled or not activated in your device. If so, they will not appear on your device menu. Your device may also have been specially configured for your network provider. This configuration may include changes in menu names, menu order and icons. Contact your service provider for more information.

This device supports WAP 2.0 protocols (HTTP and SSL) that run on TCP/IP protocols. Some features of this device, such as multimedia messaging (MMS), browsing, e-mail application, instant messaging, presence-enhanced contacts, remote synchronization, and content downloading using the

browser or MMS, require network support for these technologies.

■ SHARED MEMORY

The following features in this device may share memory: contacts, text and instant messages, e-mail, voice tags, calendar, to-do notes, and Java™ games and applications, and note application. Use of one or more of these features may reduce the memory available for the remaining features sharing memory. For example, saving many Java applications etc., may use all of the available memory. Your device may display a message that the memory is full when you try to use a shared memory feature. In this case, delete some of the information or entries stored in the shared memory features before continuing. Some of the features, such as Java applications, may have a certain amount of memory specially allotted to them in addition to the memory shared with other features.

Note that gallery files share a different memory. For further information see "Gallery" on page 70.

- When you disconnect the power cord of any accessory or enhancement, grasp and pull the plug, not the cord.
- Check regularly that enhancements installed in a vehicle are mounted and are operating properly.
- Installation of any complex car enhancements must be made by qualified personnel only.

■ Enhancements

A few practical rules about accessories and enhancements:

- Keep all accessories and enhancements out of the reach of small children.

General information

■ Overview of functions

The Nokia 6230i phone provides many functions that are practical for daily use, such as a calendar, a clock, an alarm clock, a radio, a music player, and a built-in camera. You can personalize your phone with Nokia Xpress-on™ color covers. Your phone also supports the following functions:

- Enhanced data rates for GSM evolution (EDGE), see "[\(E\)GPRS](#)" on page [64](#).
- Extensible hypertext markup language (XHTML) browser, see "[Web](#)" on page [94](#).
- E-mail application, see "[E-mail application](#)" on page [44](#).
- Instant messaging, see "[Instant messages](#)" on page [37](#).
- Presence-enhanced contacts, see "[My presence](#)" on page [52](#).
- Push to talk, see "[Push to talk](#)" on page [77](#).
- Java 2 Micro Edition (J2ME™), see "[Applications](#)" on page [91](#).
- Bluetooth technology, see "[Bluetooth wireless technology](#)" on page [62](#).

- Multimedia card to extend the memory capacity of your phone to store images and video clips.

■ Access codes

Security code

The security code (5 to 10 digits) helps to protect your phone against unauthorized use. The preset code is 12345. Change the code, and keep the new code secret and in a safe place separate from your phone. To change the code, and to set the phone to request the code, see "[Security](#)" on page [69](#).

If you enter an incorrect security code five times in succession, the phone ignores further entries of the code. Wait for 5 minutes, and enter the code again.

PIN codes

- The personal identification number (PIN) code (4 to 8 digits) helps to protect your SIM card against unauthorized use. The PIN code is usually supplied with the SIM card. Set the phone to request the PIN code each time the phone is

switched on. See "Security" on page 69.

- The PIN2 code may be supplied with the SIM card and is required for some functions.
- The module PIN is required to access the information in the security module. See "Security module" on page 100. The module PIN is supplied with the SIM card if the SIM card has a security module in it.
- The signing PIN is required for the digital signature. See "Digital signature" on page 101. The signing PIN is supplied with the SIM card if the SIM card has a security module in it.

If you enter an incorrect PIN code three times in succession, the phone may display *PIN blocked* or *PIN code blocked* and ask you to enter the PUK code.

PUK codes

The personal unblocking key (PUK) code (8 digits) is required to change a blocked PIN code. The PUK2 code is required to change a blocked PIN2 code.

If the codes are not supplied with the SIM card, contact your local service provider for the codes.

Barring password

The barring password (4 digits) is required when using the *Call barring service*. See "Security" on page 69. You can obtain the password from your service provider.

Wallet code

The wallet code (4 to 10 digits) is required to access the wallet services. If you enter an incorrect wallet code three times in succession, the wallet application is blocked for 5 minutes. If you give three more incorrect entries, the time doubles. For further information, see "Wallet" on page 86.

■ Configuration settings service

Before you use multimedia messaging, instant messaging and presence, push to talk, e-mail application, synchronization, streaming, and the browser, you must have the proper configuration settings on your phone. You may receive the settings directly as a configuration message, which you save to your phone. For more information on availability, contact your network

operator, service provider, or nearest authorized Nokia dealer.

When you have received the settings as a configuration message, and the settings are not automatically saved and activated, *Configuration settings received* is displayed.

To save the received settings, select **Show > Save**. If the phone requests *Enter settings' PIN*;, enter the PIN code for the settings, and select **OK**. To receive the PIN code, contact the service provider that supplies the settings.

If no settings are saved yet, these settings are saved and set as default configuration settings. Otherwise, the phone asks *Activate saved configuration settings?*

To discard the received settings, select **Show > Discard**.

■ Nokia support on the Web

Check <www.nokia-asia.com/support> or your local Nokia Web site for the latest version of this guide, additional information, downloads, and services related to your Nokia product.

1. Get started

■ Install the SIM card and the battery

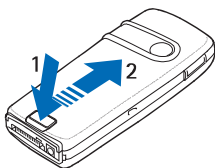
Always switch the device off and disconnect the charger before removing the battery.

Keep all SIM cards out of the reach of small children. For availability and information on using SIM card services, contact your SIM card vendor. This may be the service provider, network operator, or other vendor.

This device is intended for use with the BL-5C battery.

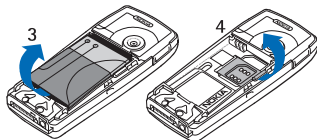
The SIM card and its contacts can easily be damaged by scratches or bending, so be careful when handling, inserting, or removing the card.

1. With the back of the phone facing you, push the back cover release button (1).

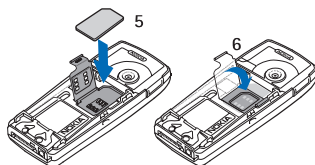


2. Slide the back cover to remove it from the phone (2).

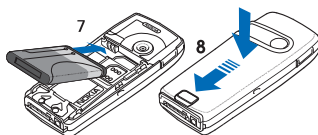
3. To remove the battery, lift it as shown (3).



4. To release the SIM card holder, gently pull the locking clip of the card holder, and open it (4).
5. Insert the SIM card into the SIM card holder (5). Make sure that the SIM card is properly inserted and that the golden contact area on the card is facing downwards.



6. Close the SIM card holder (6), and press it until it snaps into position.
7. Replace the battery (7).



- Slide the back cover into place (8).

■ Install a multimedia card

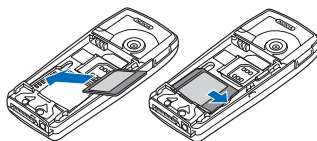
Use only compatible MultiMediaCards (MMC) with this device. Other memory cards, such as Secure Digital (SD) cards, do not fit in the MMC card slot and are not compatible with this device. Using an incompatible memory card may damage the memory card as well as the device, and data stored on the incompatible card may be corrupted.

You can use a multimedia card to extend the memory of *Gallery*. See "*Gallery*" on page 70.

Your phone supports MultiMediaCards with a capacity of up to 512 MB.

- Remove the back cover and battery from the phone. See "*Install the SIM card and the battery*" on page 13.
- Place the multimedia card in the card holder. Make sure that the multimedia card is properly inserted and that the golden

contact area on the card is facing downwards.



- Replace the battery and back cover of the phone. See step 7 and 8 in "*Install the SIM card and the battery*" on page 13.

■ Charge the battery

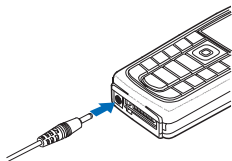


Warning: Use only batteries, chargers, and enhancements approved by Nokia for use with this particular model. The use of any other types may invalidate any approval or warranty, and may be dangerous.

Check the model number of any charger before use with this device. This device is intended for use when supplied with power from ACP-12.

For availability of approved enhancements, please check with your dealer.

1. Connect the lead from the charger to the socket on the bottom of your phone.



2. Connect the charger to an AC wall socket.

If the battery is completely discharged, it may take a few minutes before the charging indicator appears on the display or before any calls can be made.

The charging time depends on the charger and the battery used. For example, charging a BL-5C battery with the ACP-12 charger takes approximately 1 hour and 30 minutes while the phone is in the standby mode.

■ Switch the phone on and off



Warning: Do not switch the phone on when wireless phone use is prohibited or when it may cause interference or danger.

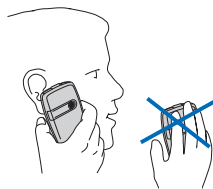
Press and hold the power key as shown.

If the phone asks for a PIN code, enter the PIN code (for example, displayed as ****), and select **OK**.



■ Normal operating position

Use the phone only in its normal operating position.



Your device has an internal antenna.



Note: As with any other radio transmitting device, do not touch the antenna unnecessarily when the device is switched on. Contact with the antenna affects call quality and may cause the device to operate at a higher power level than otherwise needed. Avoiding contact with the antenna area when operating the

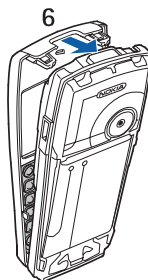
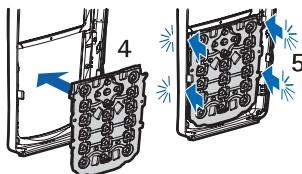
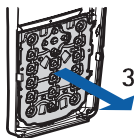
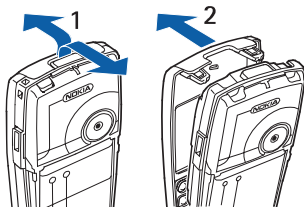
device optimises the antenna performance and the battery life.

■ Change the covers



Note: Always switch off the power and disconnect the charger and any other device before removing the covers. Avoid touching electronic components while changing the covers. Always store and use the device with the covers attached.

1. Remove the back cover from the phone. See step 1 and 2 in "Install the SIM card and the battery" on page 13.
2. Beginning at the top of the phone, gently pull the front cover away from the phone (1), and detach the front cover (2).
3. To remove the key mat from the front cover, press it gently out (3).
4. Place the key mat in the new front cover (4).
5. Press the key mat gently in (5).
6. To replace the front cover (6), press it gently on the phone, beginning from the bottom.

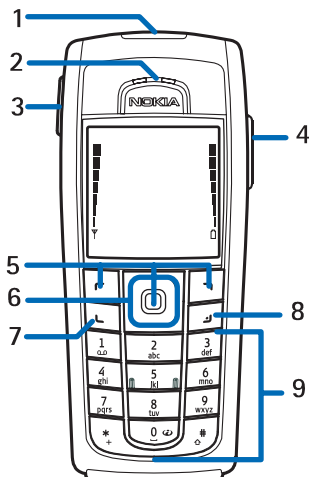


7. Replace the back cover of the phone. See step 8 in "Install the SIM card and the battery" on page 13.

2. Your phone

■ Keys and connectors

- Power key (1)



The function of these keys depends on the guiding text shown on the display above the keys.

- 4-way navigation key (6)
Scroll up and down, left and right.
- Call key (7) to dial a phone number and answer a call.
- End key (8) to end an active call and exit from any function
- Number keys (9) to enter numbers and characters

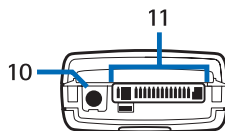
The * and # keys (9) are used for various purposes in different functions.

- Charger connector (10)

- Earpiece (2)
- Volume keys (3)

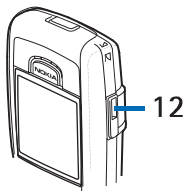
The volume up key is for starting a PTT call, in standby mode. Press and hold the volume down key to make a call using a voice tag when in standby mode.

- Loudspeaker (4)
- Left selection key, middle selection key, and right selection key (5)

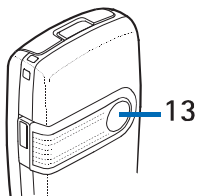


- Pop-Port™ connector used for enhancements such as headsets and the data cable (11)

- Infrared (IR) port (12)



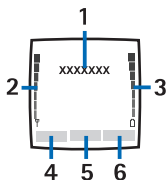
- Camera lens on the back cover of the phone (13)



■ Standby mode

When the phone is ready for use, and you have not entered any characters, the phone is in the standby mode.

- Shows the name of the network or the operator logo to indicate in which cellular network the phone is used (1).



- Shows the signal strength of the cellular network at your current location (2).
- Shows the battery charge level (3).
- The left selection key in the standby mode is **Go to** (4).

To view the functions on your personal shortcut list, select **Go to**. Select a function to activate it.

To add a function to the shortcut list, select **Options** > **Select options**, scroll to the function, and select **Mark**. To remove a function from the list, select **Unmark**.

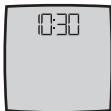
To rearrange the functions on your personal shortcut list, select **Options** > **Organise** and the desired function, select **Move**, and select where you want to move it.

- The middle selection key in the standby mode is **Menu** (5).
- The right selection key in the standby mode may be **Names** (6) to access the list of contacts in the **Contacts** menu, an operatorspecific name to access an operatorspecific Web site, or a shortcut to a specific function that you selected. See

Right selection key in "My shortcuts" on page 61.

Power saving

A digital clock view overwrites the display when no function of the phone has been used for a certain period of time. To set the power saving function *On*, see *Power saver* in "Display" on page 60.



Indicators



You received one or several text or picture messages.



You received one or several multimedia messages.



The phone registered a missed call.



Your phone is connected to the instant messaging service, and the availability status is online or offline.



You received one or several instant messages, and you are connected to



The keypad is locked.



The phone does not ring for an incoming call or text message when *Incoming call alert* is set to *Off*, or none of the caller groups has been set to alert in the *Alert for* setting, and *Message alert tone* is set to *Off*. See also "Tones" on page 60.



The alarm clock is set to *On*.



The countdown timer is running.



The stopwatch is running in the background.









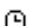



The (E)GPRS connection mode *Always online* is selected, and the (E)GPRS service is available.



An (E)GPRS connection is established.



The (E)GPRS connection is suspended (on hold), for example, if there is an incoming or outgoing call during an (E)GPRS dial-up connection.

-  When the infrared connection is activated, the indicator is shown continuously.
-  A Bluetooth connection is active.
-  If you have two phone lines, the second phone line is selected.
-  All incoming calls are diverted to another number.
-  The loudspeaker is activated, or the music stand is connected to the phone.
-  Calls are limited to a closed user group.
-  The timed profile is selected.
-  A headset, handsfree, loopset, or music stand enhancement is connected to the phone.
-  or  A push to talk connection is active or suspended.

Shortcuts in the standby mode

- To access the list of dialed numbers, press the call key once. Scroll to the number or name that you want, and to call the number, press the call key.
- To call your voice mailbox (network service) when you have saved your voice mailbox number in the phone, press and hold 1.
- To make a connection to a browser service, press and hold 0.
- To set shortcut functions for the navigation key, see [Navigation key](#) in "[My shortcuts](#)" on page 61.
- To change the profile, open the list of profiles by briefly pressing the power key. Scroll to the desired profile, and select it.

Keypad lock (keyguard)

To prevent the keys from being accidentally pressed, select **Menu**, and press * within 3.5 seconds to lock the keypad.

To unlock the keypad, select **Unlock**, and press * within 1.5

seconds. If the *Security keyguard* is set *On*, select **Unlock**, press *, and enter the security code.

To answer a call when the keyguard is on, press the call key. When you end or reject the call, the keypad automatically locks.

For *Automatic keyguard* and *Security keyguard*, see "Phone" on page 66.

When the keyguard is on, calls still may be possible to the official emergency number programmed into your device.

3. Call functions

■ Make a call

1. Enter the phone number, including the area code. If you entered an incorrect character, select **Clear** to delete it.

For international calls, press * twice for the international prefix (the + character replaces the international access code), enter the country code, the area code without the leading 0, if necessary, and the phone number.

2. To call the number, press the call key.
3. To end the call, or to cancel the call attempt, press the end key.

Make a call using contacts

To search for a name or phone number that you have saved in **Contacts**, see "**Search for a contact**" on page 51. Press the call key to call the number.

Last number redialing

In the standby mode, press the call key once to access the list of phone numbers you have most recently called or attempted to call. Scroll to the number or name you want, and to call the number, press the call key.

Speed dialing

You can assign a phone number to one of the speed-dialing keys, from 2 to 9. See "**Speed dials**" on page 56. Call the number in either of the following ways:

- Press the speed-dialing key that you want and the call key.
- If **Speed dialling** is set to **On**, press and hold a speed-dialing key until the call is started. See "**Call**" on page 66.

■ Answer or reject a call

To answer an incoming call, press the call key. To end the call, press the end key.

To reject an incoming call, press the end key.

If you select **Silence**, only the ringing tone is muted. Then either answer or reject the call.



Tip: If the **Divert if busy** function is activated to divert the calls, for example, to your voice mailbox, rejecting an incoming call also diverts the call. See "**Call**" on page 66.

If a compatible headset supplied with the headset key is connected to the phone, you can answer and end a call by pressing the headset key.

Call waiting

During a call, press the call key to answer the waiting call. The first call is put on hold. To end the active call, press the end key.

To activate the *Call waiting* function, see "Call" on page 66.

Options during a call

Many of the options that you can use during a call are network services. For availability, contact your network operator or service provider.

Select **Options** during a call for some of the following options:

- *Mute* or *Unmute*, *End call*, *End all calls*, *Contacts*, *Menu*, *Hold* or *Unhold*, *New call*, *Record*, *Answer*, and *Reject*.
- *Conference* to make a conference call that allows up to five persons to participate (network service). During a call, make a call to a new participant (*New call*). The first call is put on hold. When the new call has been answered,
- select *Conference* to include the first participant in the conference call. To have a private conversation with one of the participants, select *Private call* and the desired participant. To rejoin the conference call, select *Add to conference*.
- *Lock keypad* to activate the keypad lock.
- *Send DTMF* to send dual tone multifrequency (DTMF) tone strings, such as passwords or bank account numbers. The DTMF system is used by all touch-tone telephones. Enter the DTMF string or search for it in *Contacts*, and select **DTMF**. You can enter the wait character w and the pause character p by repeatedly pressing *.
- *Swap* to switch between the active call and the call on hold (network service).
- *Transfer* to connect a call on hold to an active call, and disconnect yourself from the calls (network service).
- *Loudspeaker* to use your phone as a loudspeaker during a call. Do not hold the phone to your ear while using the loudspeaker. To activate or

deactivate the loudspeaker, select *Loudspeaker* or *Handset*, or select **Loudsp.** or **Normal**. The loudspeaker is automatically deactivated when you end the call or call attempt, or connect the hands-free unit or headset to the phone.

If you have connected a compatible hands-free unit or the headset to the phone, *Handset* in the options list is replaced with *Handsfree* or *Headset* and the selection key **Normal** with **Handsfree** or **Headset**, respectively.


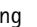


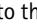

You can use the loudspeaker with the radio or the music player. See "[Basic radio functions](#)" on page 75 or "[Music player](#)" on page 73.



Warning: Do not hold the device near your ear when the loudspeaker is in use, because the volume may be extremely loud.

4. Write text

You can enter text, for example, when writing messages, using traditional or predictive text input. When using traditional text input, press a number key, 1 to 9, repeatedly until the desired character appears. In predictive text input you can enter a letter with a single key press.

When you write text,  appears at the top left of the display, indicating predictive text input, and  appears, indicating traditional text input. , , or  appears next to the text input indicator, indicating the character case. To change the character case, press #.  indicates number mode. To change from the letter to number mode, press and hold #, and select *Number mode*.

■ Settings

To set the writing language while writing text, select **Options** > *Writing language*.

When writing text, select **Options** > *Prediction settings*.

- To set predictive text input on, select *Prediction* > *On*.

To revert to traditional text input, select *Prediction* > *Off*.

- To select the prediction type, select *Prediction type* > *Normal* or *Word suggestions*. If you select *Normal*, the phone tries to predict the word on the basis of the characters you have entered. If you select *Word suggestions*, the phone tries to predict and complete the word even before you have entered all the characters.



Tip: To quickly set predictive text input on or off when writing text, press # twice, or select and hold **Options**.

■ Predictive text input

Predictive text input allows you to write text quickly using the phone keypad and a built-in dictionary.

1. Start writing a word using the keys 2 to 9. Press each key only once for one letter. The phone displays * or the letter if it separately has a meaning as a word. The entered letters are displayed underlined.

If you selected *Word suggestions* as prediction type,

the phone starts to predict the word you are writing. After you enter a few letters, and if these entered letters are not a word, the phone tries to predict longer words. Only the entered letters are displayed underlined.

2. When you finish writing the word and it is correct, to confirm it by adding a space, press 0.

If the word is not correct, press * repeatedly, or select **Options** > **Matches**. When the word that you want appears, select **Use**.

If the ? character is displayed after the word, the word you intended to write is not in the dictionary. To add the word to the dictionary, select **Spell**. The phone displays the entered letters. Complete the word using traditional text input, and select **Save**.

For more instructions for writing text, see "Tips" on page 26.

■ Traditional text input

Press a number key, 1 to 9, repeatedly until the desired character appears. Not all characters available under a number key are printed on the key.

The characters available depend on the selected writing language. See "Settings" on page 25.

If the next letter you want is located on the same key as the present one, wait until the cursor appears, or briefly press any of the navigation keys and enter the letter.

The most common punctuation marks and special characters are available under the number key 1.

For more instructions for writing text, see "Tips" on page 26.

■ Tips

The following functions may also be available for writing text:

- To insert a space, press 0.
- To move the cursor to the left, right, down, or up, scroll in the corresponding direction.
- To insert a number while in letter mode, press and hold the desired number key.
- To delete a character to the left of the cursor, select **Clear**. To delete the characters more quickly, select and hold **Clear**.

To delete all the characters at once when writing a message, select **Options** > **Clear text**.

- To insert a word when using predictive text input, select **Options** > *Insert word*. Write the word using traditional text input, and select **Save**. The word is also added to the dictionary.
- To insert a special character when using traditional text input, press *, or when using predictive text input, press and hold *, or select **Options** > *Insert symbol*. Scroll to a character, and select **Use**.
- To insert a smiley when using traditional text input, press * twice, or when using predictive text input, press and hold * and press * again, or select **Options** > *Insert smiley*. Scroll to a smiley, and select **Use**.

The following options are available when writing text messages:

- To insert a number while in letter mode, select **Options** > *Insert number*. Enter the phone number or search for it in *Contacts*, and select **OK**.
- To insert a name from *Contacts*, select **Options** > *Insert contact*. To insert a phone number or a text item attached to the name, select **Options** > *View details*.

5. Navigate the menus

The phone offers you an extensive range of functions, which are grouped into menus.

■ Access a menu function

By scrolling

1. To access the menu, select **Menu**. To change the menu view, select **Options > Main menu view > List** or **Grid**.
2. Use the navigation keys to scroll through the menu, and select, for example, **Settings**, by selecting **Select**.
3. If the selected menu contains further submenus, select the one that you want, for example, **Call settings**.
4. If the selected menu contains further submenus, repeat step 3.
5. Select the setting of your choice.
6. To return to the previous menu level, select **Back**. To exit the menu, select **Exit**.

By using a shortcut

The menus, submenus, and setting options are numbered. You can

access some of them by using their shortcut number.

1. To access the menu, select **Menu**.
2. Enter quickly, within 2 seconds, the shortcut number of the menu function you want to access. To access the menu functions in menu level 1, enter 0 and 1.
3. To return to the previous menu level, select **Back**. To exit the menu, select **Exit**.

■ List of menu functions¹

1. Messages

1. Create message
2. Inbox
3. Outbox
4. Sent items
5. Saved items
6. Instant messages
7. E-mail
8. Voice messages
9. Info messages
10. Service commands
11. Delete messages
12. Message settings



2. Contacts

1. Names
2. My presence
3. Subscribed names
4. Settings
5. Groups
6. Voice tags
7. Speed dials
8. Info numbers²
9. Service numbers²
10. My numbers³
11. Delete all contacts



3. Call register

1. Missed calls
2. Received calls
3. Dialed numbers
4. Delete recent call lists
5. Call duration
6. GPRS data counter
7. GPRS connection timer
8. Message counter
9. Positioning



4. Settings

1. Profiles
2. Themes
3. Tones
4. Display
5. Time and date
6. My shortcuts
7. Connectivity
8. Call
9. Phone
10. Enhancements⁴
11. Configuration
12. Security
13. Restore factory settings



-
1. The order and names of the menu items may vary, depending on the service provider.
 2. Shown if supported by your SIM card. For availability, contact your network operator or service provider.
 3. Shown only if any numbers assigned to your SIM card. For availability, contact your network operator or service provider.
 4. Shown only if the phone is or has been connected to a compatible enhancement available for the phone.

5. Operator menu¹

6. Gallery

1. Memory card²
2. Images
3. Video clips
4. Music files
5. Themes
6. Graphics
7. Tones
8. Recordings



7. Media

1. Camera
2. Media player
3. Music player
4. Radio
5. Recorder
6. Equaliser



8. Push to talk

1. Switch PTT on/
Switch PTT off
2. Callback inbox
3. Group list
4. Contacts list
5. Add group
6. Push to talk settings
7. Configuration settings
8. Web



9. Organiser

1. Alarm clock
2. Calendar
3. To-do list
4. Notes
5. Wallet
6. Sync



10. Applications

1. Games
2. Collection
3. Extras



11. Web

1. Home
2. Bookmarks
3. Download links
4. Last web address
5. Service inbox
6. Settings
7. Go to address
8. Clear the cache



12. SIM services³



-
1. If this menu is not shown, the following menu numbers change accordingly. The name depends on the network operator.
 2. This menu is not shown if no multimedia card is inserted. The following menu numbers change accordingly. The name depends on the memory card.
 3. Only shown if supported by your SIM card. The name and contents vary depending on the SIM card.

6. Menu functions

■ Messages



You can read, write, send, and save text, multimedia, and e-mail messages. All messages are organized into folders.



Note: When sending messages, your device may display the words *Message sent*. This is an indication that the message has been sent by your device to the message centre number programmed into your device. This is not an indication that the message has been received at the intended destination. For more details about messaging services, check with your service provider.



Important: Exercise caution opening messages. Messages may contain malicious software or otherwise be harmful to your device or PC.

Only devices that have compatible features can

receive and display messages. The appearance of a message may vary depending on the receiving device.

Text messages (SMS)

With the short message service (SMS) you can send and receive multipart messages made of several ordinary text messages (network service) that can contain pictures.

Before you can send any text, picture, or e-mail message, you must save your message center number. See "[Message settings](#)" on page 47.

To check SMS e-mail service availability and to subscribe to the service, contact your service provider. To save an e-mail address in *Contacts*, see "[Save multiple numbers, text items, or an image](#)" on page 51.

Your device supports the sending of text messages beyond the character limit for a single message. Longer messages will be sent as a series of two or more messages. Your service provider may charge accordingly. Characters that use accents or other marks, and characters from

some language options like Chinese, take up more space limiting the number of characters that can be sent in a single message.

On the top of the display you can see the message length indicator counting backwards from 160. For example, 10/2 means that you can still add 10 characters for the text to be sent as two messages.

Write and send SMS messages

1. Select **Menu** > *Messages* > *Create message* > *Text message*.
2. Write the message. See "Write text" on page 25.

You can insert text templates or a picture into the message. See "Templates" on page 33. Each picture message comprises several text messages. Sending one picture or multipart message may cost more than sending one text message.

3. To send the message, select **Send**, or press the call key.
4. Enter the recipient's phone number. To retrieve a phone number from *Contacts*, select **Search** > the desired contact > **OK**.


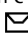
Sending options

After you have written a message, select **Options** > *Sending options* and one of the following options:


- *Send to many* to send a message to several recipients. The message is sent separately to each recipient, which may cost more than sending one message.
- *Send as e-mail* to send a message as SMS e-mail. Enter the recipient's e-mail address, or search for it in *Contacts*, and select **OK**.
- *Sending profile* to send a message using a predefined message profile, and select a message profile.

To define a message profile, see "Text message and SMS e-mail message settings" on page 47.

Read and reply to an SMS message or an SMS e-mail

 is shown when you have received a message or an e-mail using SMS. The blinking  indicates that the message memory is full. Before you can receive new messages, delete some of your old messages in the *Inbox* folder.

1. To view a new message, select **Show**, or to view it later, select **Exit**.

To read the message later, select **Menu > Messages > Inbox**. If more than one message is received, select the message you want to read.  indicates an unread message.



2. While reading a message, select **Options**. You can select to delete, forward, edit the message as a text message or as an SMS e-mail, move it to another folder, or extract message details. You can also copy text from the beginning of a message to your phone calendar as a reminder note. When reading a picture message, you can save the picture in the **Templates** folder.


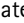
3. To reply to a message, select **Reply > Text message** or **Multimedia msg..**

When replying to an e-mail, first confirm or edit the e-mail address and subject, then write your reply message.

4. To send the message to the displayed number, select **Send > OK**.


Templates

Your phone offers you text templates , and picture templates .

1. To access the template list, select **Menu > Messages > Saved items > Text messages > Templates**.
2. To create a message using a text () or picture () template, select it, and select **Options > Edit** or **Edit text**.

3. Complete the message.

To insert a text template to the message or to the SMS e-mail that you are writing or replying to, select **Options > Use template** and the template you want.

To insert a picture into the text message that you are writing or replying to, select **Options > Insert picture**, scroll to a picture, and select **View > Insert**. The  indicator in the header of the message indicates that a picture is attached. The number of characters that you can enter in a message depends on the size of the picture.

To view the text and the picture together before sending the message, select **Options > Preview**.

Multimedia messages

The appearance of a multimedia message may vary depending on the receiving device.

To check availability and to subscribe to the multimedia messaging network service, contact your network operator or service provider. See "[Multimedia message settings](#)" on page 48.

A multimedia message can contain text, sound, a picture, a calendar note, a business card, or a video clip. If the message is too large, the phone may not be able to receive it. Some networks allow text messages that include an Internet address where you can view the multimedia message.

Multimedia messaging supports the following formats:

- Picture: JPEG, GIF, WBMP, BMP, and PNG
- Sound: AMR audio, and monophonic ringing tones
- Video clips: 3GP format with QCIF and SubQCIF image size and AMR audio

The phone may not support all variations of the file formats.

You cannot receive multimedia messages during a call, a game, another Java application, or an active browsing session over GSM

data. Because delivery of multimedia messages can fail for various reasons, do not rely solely upon them for essential communications.

The wireless network may limit the size of multimedia messages. If the inserted picture exceeds this limit, the device may make it smaller so that it can be sent by multimedia messaging.

Write and send a multimedia message

1. Select **Menu** > *Messaging* > *Create message* > *Multimedia msg.*
2. Write the message. See "[Write text](#)" on page 25.

- To insert a file in the message, select **Options** > *Insert*, and select an available option.

If you select *Image*, *Sound clip*, or *Video clip*, the list of available folders in the *Gallery* is shown. Open a folder, scroll to the desired file, and select **Options** > *Insert*. The file is attached when the file name appears in the message.

If you select *New sound clip*, *Recorder* opens, and you can start a new

recording. When you end the recording, it is added to the message.

- To insert a business card or a calendar note in the message, select **Options** > *Insert* > *Business card* or *Calendar note*.

- Your phone supports multimedia messages that contain several pages (slides). Each slide can contain text, one image, a calendar note, a business card, and one sound clip. To insert a slide in the message, select **Options** > *Insert* > *Slide*.

To open a desired slide if the message contains several slides, select **Options** > *Previous slide*, *Next slide* or *Slide list*.


To set the interval between the slides, select **Options** > *Slide timing*. To move the text component to the top or bottom of the message, select **Options** > *Place text first* or *Place text last*.

3. To view the message before sending it, select **Options** > *Preview*.

4. To send the message, select **Send**, or press the call key, and select *Phone number*.

To send the message to an e-mail address or to many recipients, select *E-mail address* or *Many*.

5. Enter the recipient's phone number or e-mail address, or search for it in *Contacts*. Select **OK**, and the message is moved to the *Outbox* folder for sending.

It takes more time to send a multimedia message than to send a text message. While the multimedia message is being sent, the animated  is displayed, and you can use other functions on the phone. If an interruption occurs while the message is being sent, the phone tries to resend the message a few times. If these attempts fail, the message remains in the *Outbox* folder. You can try to resend it later.

If *Save sent messages* > *Yes* is selected, the sent message is saved in the *Sent items* folder. See "[Multimedia message settings](#)" on page 48. When the message is sent, it is not an indication that the message

has been received at the intended destination.

Copyright protections may prevent some images, ringing tones, and other content from being copied, modified, transferred or forwarded.



Read and reply to a multimedia message




Important: Exercise caution opening messages. Messages may contain malicious software or otherwise be harmful to your device or PC.

Only devices that have compatible features can receive and display messages. The appearance of a message may vary depending on the receiving device.


The default setting of the multimedia message service is generally on.

When the phone is receiving a multimedia message, the animated  is displayed. When the message is received,  and the text *Multimedia message received* are shown.

The blinking  indicates that the memory for multimedia

messages is full. See "[Multimedia messages memory full](#)" on page 37.

1. To read a received multimedia message, select **Show**; to view it later, select **Exit**.

To read the message later, select **Menu > Messages > Inbox**. In the list of messages,  indicates an unread message. Scroll to the message that you want to view, and select it.

2. The function of the middle selection key changes according to the currently displayed attachment in the message.


To view the whole message if the received message contains a presentation, select **Play**.

Otherwise, select **Play** to listen to a sound clip or view a video clip attached to the message. To zoom in on an image, select **Zoom**. To view a business card, a calendar note, or to open a theme object, select **Open**. To open a streaming link, select **Load**.

3. To reply to the message, select **Options > Reply > Text message** or **Multimedia msg**. Write the reply message, and select **Send**.

4. Select **Options** to open and save the attached file, view file details, or delete or forward the message.

Multimedia messages memory full

When you have a new multimedia message waiting and the memory for the messages is full,  blinks and *Multimedia memory full. View waiting message.* is shown. To view the waiting message, select **Show**. To save the message, select **Save**, and delete old messages by first selecting the folder and then the old message to be deleted.

To discard the waiting message, select **Exit** > **Yes**. If you select **No**, you can view the message.


Folders

The phone saves received text and multimedia messages in the *Inbox* folder.

Multimedia messages that have not yet been sent are moved to the *Outbox* folder.

If you selected *Message settings* > *Text messages* > *Save sent messages* > **Yes** for text messages, and *Message settings* > *Multimedia msgs.* >

Save sent messages > **Yes** for multimedia messages, the sent messages are saved in the *Sent items* folder.

To save the text message that you are writing and wish to send later in the *Saved items* folder, select **Options** > *Save message* > *Saved text msgs..* For multimedia messages, select the option *Save message*.  indicates unsent messages.

To organize your text messages, you can move some of them to *My folders*, or add new folders for your messages. Select *Messages* > *Saved items* > *Text messages* > *My folders*.

To add a folder, select **Options** > *Add folder*. If you have not saved any folders, select **Add**.

To delete or rename a folder, scroll to the desired folder, and select **Options** > *Delete folder* or *Rename folder*.

Instant messages

Instant messaging (IM) (network service) is a way to send short, simple text messages to online users, delivered over TCP/IP protocols. Your contact list shows you when your contacts are online and available to participate in an instant messaging conversation.

When you have written and sent your message, it remains displayed. The reply message appears below your original message.

Before you can use instant messaging, you must subscribe to the service. To check the availability and costs, and to subscribe to the service, contact your network operator or service provider, from whom you also receive your unique ID, password, and settings.

To set the required settings for the instant messaging service, see *Connect. settings* in "Access the instant messaging menu" on page 39. The icons and texts on the display may vary, depending on the instant messaging service.

While you are connected to the instant messaging service, you can use the other functions of the phone, and the instant messaging conversation remains active in the background. Depending on the network, the active instant messaging conversation may consume the phone battery faster, and you may need to connect the phone to a charger.

Basic steps for instant messaging

- To access the instant messages menu (offline), see "Access the instant messaging menu" on page 39.
- To connect to the instant messaging service (online), see "Connect to and disconnect from the instant messaging service" on page 40.
- To start a instant messaging conversation with a contact, see *IM contacts* in "Start an instant messaging conversation" on page 40.

To create your own instant messages contact lists, see "Contacts for instant messaging" on page 43.

- To join a public instant messaging conversation, see *Groups* in "Start an instant messaging conversation" on page 40.

To join a group instant messaging conversation by acceptance an invitation message, see "Accept or reject an instant messaging invitation" on page 41.

To create your own instant messaging groups, or to join or delete a public group, see "Groups" on page 43.

- To edit your own information, see "Edit your availability status" on page 42.
- To search users and groups, see *Search* in "Start an instant messaging conversation" on page 40.
- To read a message for a new instant messaging conversation, see "Read a received instant message" on page 42.
- To write and send messages during an active instant messaging conversation, see "Participate in an instant messaging conversation" on page 42.
- To view, rename, or delete saved conversations, select *Saved conversations* when you have accessed the *Instant messages* menu.
- To block or unblock contacts, see "Block and unblock messages" on page 43.
- To disconnect from the instant messaging service, see "Connect to and disconnect from the instant messaging service" on page 40.

Access the instant messaging menu

To access the *Instant messages* menu while still offline, select **Menu > Messages > Instant messages**. If more than one set of connection settings for instant messaging service is available, select the desired one. If there is only one set defined, it is selected automatically.

- To connect to the instant messaging service, select *Login*. You can set the phone to automatically connect to the instant messaging service when you open the *Instant messages* menu. See "Connect to and disconnect from the instant messaging service" on page 40.
- To view, erase, or rename the conversations that you have saved during an instant messaging conversation, select *Saved conversations*.
- To view the settings needed for instant messaging and presence, select *Connect settings*. You may receive the settings as a configuration message. See "Configuration settings service" on page 11. To enter the settings manually,

see "[Configuration](#)" on page 68.

To select the configuration settings that support instant messaging, select *Configuration > Default, Personal config.*, or a service provider.

To select an instant messaging account provided by the service provider, select *Account*.

To enter your user ID received from the service provider, select *User ID*.

To enter the password received from the service provider, select *Password*.

Connect to and disconnect from the instant messaging service

To connect to the instant messaging service, access the *Instant messages* menu, select the desired instant messaging service if needed, and select *Login*. When the phone has successfully connected, *Logged in* is displayed.




Tip: To set the phone to automatically connect to the instant messaging service when you switch the phone on, select *Menu > Messages > Instant messages*, connect to the instant messaging service, and select *My settings > Automatic login > On phone start-up*.


To disconnect from the instant messaging service, select *Logout*.

Start an instant messaging conversation

Open the *Instant messages* menu, and connect to the instant messaging service. You can start a conversation in different ways:

- Select *Conversations*. The list of new and read messaging sessions or invitations to instant messaging during the active conversation is displayed. Scroll to a message or an invitation, and select *Open*.



 indicates new and read instant messages.


 indicates new and read group messages.


 indicates invitations.

The icons and texts on the display may vary, depending on the instant messaging service.

- Select **IM contacts**. The contacts that you added to the list are displayed. Scroll to the contact with whom you would like to start instant messaging, and select **Chat**, or if a new contact is shown on the list, select **Open**.

 indicates an online contact and  an offline contact in the contact memory of the phone.

 indicates a blocked contact. See "**Block and unblock messages**" on page 43.

 indicates that you have received a new message from a contact.

You can add contacts to the list. See "**Contacts for instant messaging**" on page 43.

- Select **Groups > Public groups** (dimmed if groups are not supported by the network). The list of bookmarks to public groups provided by the network operator or service provider is displayed. To start a conversation, scroll to a group, and select **Join**. Enter the screen name that you want to use as a nickname in the

conversation. When you have successfully joined the group conversation, you can start a group conversation. You can also create a private group. See "**Groups**" on page 43.

- Select **Search > Users or Groups** to search for other instant messaging users or public groups on the network by phone number, screen name, e-mail address, or name. If you select **Groups**, you can search for a group by a member in the group or by group name, topic, or ID.

To start the conversation when you have found the user or the group that you want, select **Options > Chat** or **Join group**.

- Start a conversation from Contacts. See "**View the subscribed names**" on page 55.

Accept or reject an instant messaging invitation

In the standby mode, when you are connected to the instant messaging service and you receive a new invitation, **New invitation received** is displayed. To read it, select **Read**. If more than one invitation is received, scroll to an invitation, and select **Open**.

To join the private group conversation, select **Accept**. Enter

the screen name that you want to use as a nickname in the conversation.

To reject or delete the invitation, select **Options** > *Reject* or *Delete*. You can write an explanation for the rejection.

Read a received instant message

In the standby mode, when you are connected to the instant messaging service and you receive a new message that is not a message associated with an active conversation, *New instant message* is displayed. To read it, select **Read**.

If more than one message is received, the number of messages, followed by *__ new instant messages*, is displayed. Select **Read**, scroll to a message, and select **Open**.


New messages received during an active conversation are held in *Instant messages* > *Conversations*. If you receive a message from someone who is not in *IM contacts*, the sender ID is displayed. If the sender is in the phone memory and the phone recognizes it, the name of the person is displayed. To save a new contact that is not in the phone

memory, select **Options** > *Save contact*.

Participate in an instant messaging conversation

Join or start a conversation by selecting **Write** or start writing.



Tip: If you receive a new message during a conversation from a person who is not taking part in the current conversation,  is displayed, and the phone sounds an alert tone.

Write your message, and to send it, select **Send**, or press the call key. The message stays on the display, and the reply message appears below your message. If you select **Options**, some of the following options are available: *View conversation*, *Save contact*, *Group members*, *Block contact*, *End conversation*.



Edit your availability status

1. Open the *Instant messages* menu, and connect to the instant messaging service.
2. To view and edit your own availability information or screen name, select *My settings*.
3. To allow all the other instant messaging users to see you as

being online, select *Availability > Available for all.*

To allow only the contacts on your instant messaging contact list to see you as being online, select *Availability > Avail. for contacts.*

To appear as being offline, select *Availability > Appear offline.*

When you are connected to the instant messaging service,  indicates that you are online and  that you are not visible to others.

Contacts for instant messaging

You can add contacts to the instant messaging contacts list.

1. Connect to the instant messaging service, and select *IM contacts.*
2. To add a contact to the list, select *Options > Add contact,* or if you have no contacts added, select *Add.* Select *Enter ID manually, Search from serv., Copy from server,* or *By mobile number.* When the contact is successfully added, the phone confirms it.
3. Scroll to a contact, and to start a conversation, select *Chat,* or select *Options > Contact info,*

Block contact (or *Unblock contact*), *Add contact, Remove contact, Change list, Copy to server,* or *Availability alerts.*

Block and unblock messages

To block messages, connect to the instant messaging service, and select *Conversations > IM contacts,* or join or start a conversation. Scroll to the contact from whom you want to block incoming messages, select *Options > Block contact > OK.*

To unblock messages, connect to the instant messaging service, and select *Blocked list.* Scroll to the contact from whom you want to unblock the messages, and select *Unblock.*

You can also unblock messages from the contact list.

Groups

You can create your own private groups for an instant messaging conversation, or use the public groups provided by the service provider. The private groups exist only during an instant messaging conversation, and the groups are saved on the server of the service provider. If the server you are logged into does not support group services, all group-related menus are dimmed.

Public groups

You can bookmark public groups that your service provider may maintain. Connect to the instant messaging service, and select **Groups > Public groups**. Scroll to a group that you want to chat with, and select **Join**. If you are not in the group, write your screen name as your nickname for the group. To delete a group from your group list, select **Options > Delete group**.

To search for a group, select **Groups > Public groups > Search groups**. You can search for a group by a member in the group or by group name, topic, or ID.

Create a private group

Connect to the instant messaging service, and select **Groups > Create group**. Enter the name for the group and the screen name that you want to use. Mark the private group members in the contacts list, and write an invitation.

E-mail application

The e-mail application uses (E)GPRS (network service) to allow you to access your e-mail account from your phone when you are not in the office or at home. This e-mail application is different from

the SMS e-mail function. See "[Sending options](#)" on page 32. To use the e-mail function on your phone, you need a compatible e-mail system.

You can write, send, and read e-mail with your phone. You can also save and delete the e-mail on a compatible PC. Your phone supports POP3 and IMAP4 e-mail servers.

Before you can send and retrieve any e-mail messages, you must do the following:

- Obtain a new e-mail account or use your current account. To check the availability of your e-mail account, contact your e-mail service provider.
 - Check your e-mail settings with your network operator or e-mail service provider. You may receive the e-mail configuration settings as a configuration message. See "[Configuration settings service](#)" on page 11. You can also enter the settings manually. See "[Configuration](#)" on page 68.
- To activate the e-mail settings, select **Menu > Messages > Message settings > E-mail messages**. See "[E-mail settings](#)" on page 49.

This application does not support keypad tones.

Secure server connection

The secure socket layer (SSL) improves the security of the connection to the e-mail account.

To activate the function, select **Menu** > *Messages* > *E-mail* > **Options** > *Extra settings* > *Secure (SSL)* > *On*.

Ensure that your e-mail account supports SSL, and that the correct server port is set for the server to send and retrieve e-mails.

Write and send an e-mail

You can write your e-mail message before connecting to the e-mail service, or connect to the service first, and then write and send your e-mail.

1. Select **Menu** > *Messages* > *E-mail* > *Create e-mail*.
2. Enter the recipient's e-mail address, and select **OK**.

You can also select **Edit**, and enter the e-mail address. To search for the e-mail address in *Contacts*, select **Edit** > **Options** > *Search*.

3. Write a subject for the e-mail, and select **OK**.

If you select **Options**, you can select the message editor, add

a new recipient, add a copy recipient, or a hidden copy recipient.

To attach a file to the e-mail, select **Options** > *Attach* and a desired file from the *Gallery*.

4. Write the e-mail message. See "Write text" on page 25. The number of characters that you can enter is shown on the top right of the display.
5. To send the e-mail message immediately, select **Send** > *Send now*.

To save the e-mail in the *Outbox* folder to be sent later, select **Send** > *Send later*.

To edit or continue writing your e-mail later, select **Options** > *Save draft*. The e-mail is saved in *Other folders* > *Drafts*.

To send the e-mail later, select **Menu** > *Messages* > *E-mail* > **Options** > *Send now* or *Retrieve and send*.


Download e-mail from your e-mail account

1. To access the e-mail application, select **Menu** > *Messages* > *E-mail*.
2. To download e-mail messages that have been sent to your e-mail account, select *Retrieve*.

To download new e-mail messages and to send e-mails that have been saved in the

Outbox folder, select **Options** > *Retrieve and send*.

To first download the headings of the new e-mail messages that have been sent to you e-mail account, select **Options** > *Check new e-mail*. Then, to download the selected e-mails, mark the desired ones, and select **Options** > *Retrieve*

3. Select the new message in *Inbox*. To view it later, select **Back**.  indicates an unread message.

Read and reply to e-mail



Important: E-mail messages may contain viruses or otherwise be harmful to your device or PC. Do not open any attachment if you are not sure of the trustworthiness of the sender.

1. Select **Menu** > *Messages* > *E-mail* > *Inbox*.
2. While reading the message, select **Options** to view the available options, such as to view the details of the selected e-mail, or to mark it as unread, to delete or forward it, or to

move it to another folder, or to save an attachment to a folder in *Gallery*.

3. To reply to an e-mail, select **Reply** > *Original text* or *Empty screen*. To reply to many, select **Options** > *Reply to all*. Confirm or edit the e-mail address and subject, then write your reply.
4. To send the message, select **Send** > *Send now*.

Inbox and Other folders

Your phone saves e-mail that you have downloaded from your e-mail account in the *Inbox* folder.

Other folders contains the following folders: *Drafts* for saving unfinished e-mail, *Archive* for organizing and saving your e-mail, *Outbox* for saving e-mail that has not been sent, and *Sent items* for saving e-mail that has been sent.

To manage the folders and their e-mail content, select **Options** > *Manage folder*.

Delete e-mail messages


Select **Menu** > *Messages* > *E-mail* > **Options** > *Manage folder* and the desired folder. Mark the messages that you want to delete, and to delete them, select **Options** > *Delete*.

Deleting an e-mail from your phone does not delete it from the e-mail server. To set the phone to delete the e-mail also from the e-mail server, select **Menu** > *Messages* > *E-mail* > **Options** > *Extra settings* > *Leave c. on server* > *Delete retr. msgs.*

Voice messages

The voice mailbox is a network service and you may need to subscribe to it. For more information and for your voice mailbox number, contact your service provider.

To call your voice mailbox, select **Menu** > *Messages* > *Voice messages* > *Listen to voice messages*. To enter, search for, or edit your voice mailbox number, select *Voice mailbox number*.

If supported by the network,  indicates new voice messages. To call your voice mailbox number, select **Listen**.



Tip: Pressing and holding 1 calls your voice mailbox if the number is set.

Info messages

With the *Info messages* network service, you can receive messages on various topics from your service provider. To check availability,

topics, and the relevant topic numbers, contact your service provider.

Service commands

Select **Menu** > *Messages* > *Service commands*. Write and send service requests (also known as USSD commands), such as activation commands for network services, to your service provider.

Delete messages

To delete all messages from a folder, select **Menu** > *Messages* > *Delete messages* and the folder from which you want to delete the messages. Select **Yes**, and if the folder contains unread messages, the phone asks whether you want to delete them also. Select **Yes** again.

Message settings

Text message and SMS e-mail message settings

The message settings affect the sending, receiving, and viewing of messages. To change the settings:

1. Select **Menu** > *Messages* > *Message settings* > *Text messages*.
2. Select *Sending profile*, and if more than one message profile

set is supported by your SIM card, select the profile you want to change. Select from the following settings:

- *Message centre number* to save the phone number of the message center that is required for sending text messages. You receive this number from your service provider.
- *Messages sent via* to select the message type: *Text*, *E-mail*, *Paging*, or *Fax*.
- *Message validity* to select the length of time for which the network attempts to deliver your message.
- *Default recipient number* to save a default number for sending messages for this profile if you have selected the message type *Text*. Select *E-mail server* to save the e-mail server number if you have selected the message type *E-mail*.
- *Delivery reports* to ask the network to send delivery reports about your messages (network service).
- *Use GPRS > Yes* to set GPRS as the preferred SMS bearer. Also, select *GPRS connection > Always online*. See "(E)GPRS connection" on page 65.
- *Reply via same centre* to allow the recipient of your message to send you a reply using your message center (network service).
- *Rename sending profile* to change the name of the selected message profile. The message profile sets are only displayed if your SIM card supports more than one set. You cannot rename the default profile.

3. *Save sent messages > Yes* to set the phone to save the sent text messages in the *Sent items* folder.
4. *Automatic resending > On* to set the phone to automatically resend the message if the initial send attempt does not succeed.

Multimedia message settings

The message settings affect the sending, receiving, and viewing of multimedia messages.

You may receive the configuration settings for multimedia messaging as a configuration message. See "*Configuration settings service*" on page 11. You can also enter the

settings manually. See ["Configuration"](#) on page 68.

To select the multimedia message settings, select **Menu** > *Messages* > *Message settings* > *Multimedia msgs.* Select from the following settings:

- *Save sent messages* > *Yes* to set the phone to save sent multimedia messages in the *Sent items* folder.
- *Delivery reports* to ask the network to send delivery reports about your messages (network service).
- *Scale image down* to define the image size when you insert an image to a multimedia message.
- *Default slide timing* to define the default time between slides in multimedia messages.
- *Allow multimedia reception.* To receive or to block the multimedia message, select *Yes* or *No*. If you select *In home network*, you cannot receive multimedia messages when outside your home network.
- *Incoming multimedia messages.* To allow the the reception of multimedia messages automatically, manually after being prompted,

or to reject the reception, select *Retrieve*, *Retrieve manually*, or *Reject*.

- *Configuration settings* > *Configuration*. Only the configurations that support multimedia messaging are shown. Select a service provider, *Default*, or *Personal config.* for multimedia messaging.

Select *Account* and select a multimedia messaging service account contained in the active configuration settings.

- *Allow adverts* to receive or reject advertisements. This setting is not shown if *Allow multimedia reception* is set to *No*.

E-mail settings

The settings affect the sending, receiving, and viewing of e-mail.

You may receive the configuration settings for the e-mail application as a configuration message. See ["Configuration settings service"](#) on page 11. You can also enter the settings manually. See ["Configuration"](#) on page 68.

To activate the settings for the e-mail application, select **Menu** > *Messages* > *Message settings* >

E-mail messages. Select from the following options:

- *Configuration.* Select the set that you would like to activate.
- *Account.* Select an account provided by the service provider.
- *My name.* Enter your name or nickname.
- *E-mail address.* Enter your e-mail address.
- *Include signature.* You can define a signature that is automatically added to the end of your e-mail when you write your message.
- *Reply-to address.* Enter the e-mail address to which you want the replies to be sent.
- *SMTP user name.* Enter the name that you want to use for outgoing mail.
- *SMTP password.* Enter the password that you want to use for outgoing mail.
- *Display terminal window.* Select *Yes* to perform manual user authentication for intranet connections.
- *Incoming server type.* Select *POP3* or *IMAP4*, depending on the type of e-mail system that you are using. If both types are supported, select *IMAP4*.

- *Incoming mail settings*

If you selected *POP3* as the incoming server type, the following options are shown: *Retrieve e-mails*, *POP3 user name*, *POP3 password*, and *Display terminal window*.

If you selected *IMAP4* as the incoming server type, the following options are shown: *Retrieve e-mails*, *Retrieval method*, *IMAP4 user name*, *IMAP4 password*, and *Display terminal window*.

Other settings

To select other settings for messages, select **Menu** > *Messages* > *Message settings* > *Other settings*. To change the font size for reading and writing messages, select *Font size*. To set the phone to replace character-based smileys with graphical ones, select *Graphical smileys* > *Yes*.


■ Contacts



You can save names and phone numbers (contacts) in the phone memory and in the SIM card memory.

The phone memory may save contacts with additional details, such as various phone numbers

and text items. You can also save an image for a limited number of contacts.

The SIM card memory can save names with one phone number attached to them. The contacts saved in the SIM card memory are indicated by .

Search for a contact


1. Select **Menu** > *Contacts* > *Names*.
2. Scroll up or down through the list of contacts, or enter the first characters of the name you are searching for in the pop-up window.

Save names and phone numbers

Names and numbers are saved in the used memory. To save a name and phone number, select **Menu** > *Contacts* > *Names* > **Options** > *Add new contact*. Enter the name and the phone number.

Save multiple numbers, text items, or an image

In the phone memory for contacts you can save different types of phone numbers, and short text items per name.

The first number you save is automatically set as the default number, and it is indicated with a frame around the number type indicator, for example, . When you select a name from contacts, for example, to make a call, the default number is used unless you select another number.

1. Make sure that the memory in use is either *Phone* or *Phone and SIM*.
2. Scroll to the name to which you want to add a new number or text item, and select **Details** > **Options** > *Add detail*.
3. To add a number, select *Number* and a number type.

To add another detail, select a text type, or an image from *Gallery*.

To search for an ID from the server of your service provider if you have connected to the presence service, select *User ID* > *Search*. See "My presence" on page 52. If only one ID is found, it is automatically saved. Otherwise, to save the ID, select **Options** > *Save*. To enter the ID, select *Enter ID manually*. Enter the ID, and select **OK** to save it.

To change the number type, scroll to the desired number, and select **Options** > *Change type*. To set the selected number as the default number, select *Set as default*.

4. Enter the number or text item, and to save it, select **OK**.
5. To return to the standby mode, select **Back** > **Exit**.

Copy contacts

Search for the contact you want to copy, and select **Options** > *Copy*. You can copy names and phone numbers from the phone contact memory to the SIM card memory, or vice versa. The SIM card memory can save names with one phone number attached to them.

Edit contact details

1. Search for the contact you want to edit, select **Details**, and scroll to the desired name, number, text item, or image.
2. To edit a name, number, or text item, or to change the image, select **Options** > *Edit name*, *Edit number*, *Edit detail*, or *Change image*.

You cannot edit an ID when it is on the *IM contacts* or the *Subscribed names* list.

Delete contacts

To delete all the contacts and the details attached to them from the phone or SIM card memory, select **Menu** > *Contacts* > *Delete all contacts* > *From phone mem.* or *From SIM card*. Confirm with the security code.

To delete a contact, search for the desired contact, and select **Options** > *Delete contact*.

To delete a number, text item, or an image attached to the contact, search for the contact, and select **Details**. Scroll to the desired detail, and select **Options** > *Delete* > *Delete number*, *Delete detail*, or *Delete image*. Deleting an image from contacts does not delete it from *Gallery*.

My presence

With the presence service (network service) you can share your presence status with other users with compatible devices and access to the service, such as your family, friends, and colleagues. Presence status includes your availability, status message, and personal logo. Other users who have access to the service and who request your information are able to see your status. The requested information is shown in

Subscribed names in the viewers' *Contacts* menu. You can personalize the information that you want to share with others and control who can see your status.




Before you can use presence, you must subscribe to the service. To check the availability and costs, and to subscribe to the service, contact your network operator or service provider, from whom you also receive your unique ID, password, and the settings for the service. See "[Configuration](#)" on page 68.

While you are connected to the presence service, you can use the other functions of the phone, and the presence service is active in the background. If you disconnect from the service, your presence status is shown for a certain amount of time to viewers, depending on the service provider.

Select **Menu** > *Contacts* > *My presence*. Select from the following options:

- *Connect to 'My presence' service* or *Disconnect from service* to connect to or disconnect from the service.
- *My current presence* to change your presence status. Select from the following options:

View current presence > *Private presence* or *Public presence* to view your current private or public status.

My availability to set your availability status to *Available* (), *Busy* (), or *Not available* ().

My presence message and write the text to be shown to other persons, or select **Options** > *Previous messages* and an old message as the status message.

My presence logo to select your personal logo from the *Graphics* folder in *Gallery*. If you select *Default*, the logo is not published.

Show to to select whether to show your presence status to others.

If you select *Private and public*, contacts in your private list are able to see all your presence information: availability, status message, and logo. Other contacts can see only your availability.

If you select *Private viewers*, the contacts in your private list can see all your presence information. Other users will not see any information. If you

select *No one*, no one can see your presence information.

- *My viewers*. Select from the following options:

Current viewers to view all the persons who have subscribed to your presence information.

Private list is a list of the persons who are allowed to view all your presence information, including availability, status message, and logo. You can manage your own private list. Other persons who are not in the private list can see only your availability.

Blocked list to view all the persons you have blocked from viewing your presence information.

- *Settings*. Select from the following options:

Show current presence in idle to show the current status indicator in the standby mode.

Synchronise with profiles to select whether you want to update your *My presence message* and *My availability* manually or automatically by linking them to the currently active profile. See also *"Profiles"* on page 59. You

cannot link a personalized status logo to a Profile.

Connection type to select if the phone connects automatically to the service when the phone is switched on.

Connect. settings and select from the following:

- *Configuration*. Only the configurations that support presence service are shown. Select a service provider, *Default*, or *Personal config.* for presence service. You may receive the presence service settings as a configuration message. See *"Configuration settings service"* on page 11. You can also enter the configuration settings manually. See *"Configuration"* on page 68.
- *Account* and select a presence service account contained in the active configuration settings.
- *User ID* to enter your user ID received from the service provider.
- *Password* to enter the password received from the service provider.

Subscribed names

You can create a list of contacts whose presence status information you want to be aware of. You can view the information if it is allowed by the contacts and the network. To view these subscribed names, scroll through the contacts or use the *Subscribed names* menu.

Make sure that the memory in use is either *Phone* or *Phone and SIM*.

To connect to the Presence service, select **Menu** > *Contacts* > *My presence* > *Connect to 'My presence' service*.

Add contacts to the subscribed names

1. Select **Menu** > *Contacts* > *Subscribed names*. If you have not connected to the Presence service, the phone asks if you want to connect now.
2. If you have no contacts on your list, select **Add**. Otherwise, select **Options** > *Subscribe new*. Your list of contacts is shown.
3. Select a contact from the list. If the contact has a saved ID, the contact is added to the subscribed names list. If there is more than one ID, select one of them. After subscription to

the contact, *Subscription activated* is shown.



Tip: To subscribe to a contact from the *Contacts* list, search for the contact you want, and select **Details** > **Options** > *Request presence* > *As subscription*.



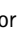
If you only want to view the presence information but not to subscribe to a contact, select *Request presence* > *One time only*.


View the subscribed names

To view the presence information, see also "Search for a contact" on page 51.

1. Select **Menu** > *Contacts* > *Subscribed names*.

The status information of the first contact on the subscribed names list is displayed. The information that the person wants to make available to others may include text and an icon.

 ,  , or  indicate that the person is available, not visible to others, or not available.

 indicates that the person's presence information is not available.

2. Select **Details** to view the details of the selected contact, or select **Options**, and select from the following options:

- **Subscribe new** to add a new contact to the list of subscribed names.
- **Send message** to send a text message, multimedia message, or an e-mail to the selected contact.
- **Send business card** to send a business card of the selected contact.
- **Unsubscribe** to remove the selected contact from the list of subscribed names.

Unsubscribe a contact

To unsubscribe a contact from the **Contacts** list, select the contact, and select **Details > Options > Unsubscribe > OK**.

To unsubscribe from the **Subscribed names** menu, see "**View the subscribed names**" on page 55.

Business cards

You can send and receive a person's contact information from a compatible device that supports the vCard standard as a business card.

When you have received a business card, select **Show > Save** to save the business card in the phone memory. To discard the business card, select **Exit > Yes**.

To send a business card, search for the contact whose information you want to send, and select **Details > Options > Send business card > Via multimedia, Via text message, Via infrared, or Via Bluetooth**.

Speed dials

To assign a number to a speed-dialing key, select **Menu > Contacts > Speed dials**, and scroll to the speed-dialing number that you want.

Select **Assign**, or if a number has already been assigned to the key, select **Options > Change**. Select **Search**, and select first the name and then the number you want to assign. If the **Speed dialling** function is off, the phone asks whether you want to activate it. See also **Speed dialling** in "**Call**" on page 66.

To make a call using the speed-dialing keys, see "**Speed dialing**" on page 22.

Voice dialing

You can make a phone call by saying a voice tag that has been added to a phone number. Any spoken words, such as a name, can be a voice tag. The number of voice tags you can create is limited.

Before using voice tags, note that:

- Voice tags are not language-dependent. They are dependent on the speaker's voice.
- You must say the name exactly as you said it when you recorded it.
- Voice tags are sensitive to background noise. Record voice tags and use them in a quiet environment.
- Very short names are not accepted. Use long names and avoid similar names for different numbers.



Note: Using voice tags may be difficult in a noisy environment or during an emergency, so you should not rely solely upon voice dialling in all circumstances.

Add and manage voice tags

Save or copy to the phone memory the contacts for which you want to add a voice tag. You can also add voice tags to the names in the

SIM card, but if you replace your SIM card with a new one, you first must delete the old voice tags before you can add new ones.

1. Search for the contact to which you want to add a voice tag.
2. Select **Details**, scroll to the desired phone number, and select **Options** > *Add voice tag*.
3. Select **Start**, and say clearly the words you want to record as a voice tag. After recording, the phone plays the recorded tag.

☎ appears after the phone number with a voice tag in *Contacts*.

To check the voice tags, select **Menu** > *Contacts* > *Voice tags*. Scroll to the contact with the voice tag that you want, and select an option to listen to, delete, or change the recorded voice tag.

Make a call by using a voice tag

If the phone has an application running that is sending or receiving data using a GPRS connection, you must end the application before voice dialing.

1. In the standby mode, press and hold the volume down key. A

short tone is heard, and *Speak now* is displayed.

2. Say the voice tag clearly. The phone plays the recognized voice tag, and dials the phone number of the voice tag after 1.5 seconds.

If you are using a compatible headset with the headset key, press and hold the headset key to start the voice dialing.

Other functions in Contacts

Select **Menu** > *Contacts*, and the following functions may be available:

- *Settings* > *Memory in use* to select the SIM card or phone memory for your contacts. To recall names and number from both memories, select *Phone and SIM*. In that case, when you save names and numbers, they are saved in the phone memory.

To select how the names and numbers in *Contacts* are displayed, select *Contacts view*.

To view the free and used memory capacity, select *Memory status*.

- *Groups* to arrange the names and phone numbers saved in the memory into caller groups with different ringing tones and group images.
- *Info numbers* to call the information numbers of your service provider if the numbers are included on your SIM card (network service).
- *Service numbers* to call the service numbers of your service provider if the numbers are included on your SIM card (network service).
- *My numbers* to view the phone numbers assigned to your SIM card. This is only shown, if the numbers are included on your SIM card.

■ Call register



The phone registers the phone numbers of missed, received, and dialed calls, and the approximate length of your calls.

The phone registers calls only if the network supports it and the phone is switched on and within the network service area.

Recent calls lists

When you select **Options** in the *Missed calls*, *Received calls*, or *Dialled numbers* menu, you can view the time of the call; edit, view, or call the registered phone number; add it to the memory; or delete it from the list. You can also send a text message. To delete the recent calls lists, select *Delete recent call lists*.

Counters and timers for calls, data, and messages



Note: The actual invoice for calls and services from your service provider may vary, depending upon network features, rounding off for billing, taxes and so forth.

Select **Menu** > *Call register* > *Call duration*, *GPRS data counter*, *GPRS connection timer*, or *Message counter* for approximate information on your recent communications.



Note: Some timers may be reset during service or software upgrades.

Positioning information

The network may send you a location request. You can ensure

that the network will deliver location information of your phone only if you approve it (network service). Contact your network operator or service provider to subscribe and to agree upon the delivery of location information.

To accept or reject the location request, select **Accept** or **Reject**. If you miss the request, the phone automatically accepts or rejects it according to what you have agreed with your network operator or service provider. The phone displays *1 missed position request*. To view the missed location request, select **Show**.

To view the information on the 10 most recent privacy notifications and requests or to delete them, select **Menu** > *Call register* > *Positioning* > *Position log* > *Open folder* or *Delete all*.

Settings



Profiles

Your phone has various setting groups, called profiles, for which you can customize the phone tones for different events and environments.

Select **Menu** > *Settings* > *Profiles*. Scroll to a profile, and

select it. Select from the following options:

- **Activate** to activate the selected profile.
- **Timed** to set the profile to be active until a certain time up to 24 hours, and set the end time. When the time set for the profile expires, the previous profile that was not timed becomes active.
- **Personalise** to personalize the profile. Select the setting you want to change, and make the changes.

To change your presence status information, select **My presence** > **My availability** or **My presence message**. The **My presence** menu is available if you set **Synchronise with profiles** to **On**. See "**My presence**" on page 52.

Themes

A theme contains many elements for personalizing your phone, such as wallpaper, screen saver, color scheme, and a ringing tone.

Select **Menu** > **Settings** > **Themes**. Select from the following options:

- **Select theme** to set a theme in your phone. A list of folders in

Gallery opens. Open the **Themes** folder, and select a theme.

- **Theme downloads** to open a list of links to download more themes. See "**Download files**" on page 99.

Tones

You can change the settings of the selected active profile.

Select **Menu** > **Settings** > **Tones**. Select and change **Incoming call alert**, **Ringling tone**, **Ringling volume**, **Vibrating alert**, **Message alert tone**, **Instant message alert tone**, **Keypad tones**, **Warning tones**, and **Push to talk settings**. You can find the same settings in the **Profiles** menu; see "**Profiles**" on page 59.

To set the phone to ring only upon calls from phone numbers that belong to a selected caller group, select **Alert for**. Scroll to the caller group you want or **All calls**, and select **Mark**.

Display

Select **Menu** > **Settings** > **Display**. Select from the following options:

- **Wallpaper** > **Select wallpaper** or **Select slide set**, and an

image or a slide from *Gallery* to set your phone to display it when the phone is in the standby mode. To activate the wallpaper, select *On*. To download more graphics, select *Graphic downloads*.

- *Screen saver > Select screen saver > Image, Slide set, or Video clip* to select a screen saver from *Gallery*. In *Time-out*, select the time after which the screen saver is activated. To activate the screen saver, select *On*.
- *Power saver > On* to save some battery power. A digital clock is displayed when no function of the phone is used for a certain time.
- *Colour schemes* to change the color in some display components, such as indicators and signal and battery bars.
- *Idle state font colour* to select the color for the texts on the display in the standby mode.
- *Operator logo* to set your phone to display or hide the operator logo.

Time and date

Select **Menu** > *Settings* > *Time and date*. Select from the following options:

- *Clock* to set the phone to show the clock in the standby mode, adjust the clock, and select time zone and time format.
- *Date* to set the phone to show the date in the standby mode, set the date, and select the date format and date separator.
- *Auto-update of date & time* (network service) to set the phone to automatically update the time and date according to the current time zone.


My shortcuts

With personal shortcuts you get quick access to often used functions of the phone. To manage the shortcuts, select **Menu** > *Settings* > *My shortcuts* and from the following options:

- *Right selection key* to select a function from the list for the right selection key. See also "*Standby mode*" on page 18. This menu may not be shown, depending on your service provider.
- *Navigation key* to select shortcut functions for the

navigation key. Scroll to the desired navigation key, select **Change** and a function from the list. To remove a shortcut function from the key, select *(empty)*. To reassign a function for the key, select **Assign**.

This menu may not be shown, depending on your service provider.

- **Voice commands** to activate phone functions by saying a voice tag. Select a folder, scroll to a function to which you want to add a voice tag, and select **Add**.  indicates a voice tag.

To add a voice command, see ["Add and manage voice tags"](#) on page 57. To activate a voice command, see ["Make a call by using a voice tag"](#) on page 57.

Connectivity

You can connect the phone to a compatible device using an infrared, Bluetooth wireless technology, or data cable (DKU-2) connection. You can also define the settings for (E)GPRS dial-up connections.

Bluetooth wireless technology

This device is compliant with Bluetooth Specification 1.1 supporting the following profiles: Hands-free, headset, object push profile, file transfer profile, dial-up networking profile, SIM access profile, serial port profile. To ensure interoperability between other devices supporting Bluetooth technology, use Nokia approved enhancements for this model. Check with the manufacturers of other devices to determine their compatibility with this device.

There may be restrictions on using Bluetooth technology in some locations. Check with your local authorities or service provider.

Features using Bluetooth technology, or allowing such features to run in the background while using other features, increase the demand on battery power and reduces the battery life.

Bluetooth technology allows you to connect the phone to a compatible Bluetooth device within 10 meters. Since devices using Bluetooth technology communicate using radio waves, your phone and the other devices do not need to be in direct line-of-

sight, although the connection can be subject to interference from obstructions such as walls or from other electronic devices.

Set up a Bluetooth connection

Select **Menu** > *Settings* > *Connectivity* > *Bluetooth*. Select from the following options:

Bluetooth > *On* or *Off* to activate or deactivate the Bluetooth function. ((●)) indicates an active Bluetooth connection.

Search for audio enhancements to search for compatible Bluetooth audio devices. Select the device that you want to connect to the phone.

Paired devices to search for any Bluetooth device in range. Select **New** to list any Bluetooth device in range. Scroll to a device, and select **Pair**. Enter the Bluetooth passcode of the device to associate (pair) the device to your phone. You only must give this passcode when you connect to the device for the first time. Your phone connects to the device, and you can start data transfer.

Bluetooth wireless connection

Select **Menu** > *Settings* > *Connectivity* > *Bluetooth*. To

check which Bluetooth connection is currently active, select *Active device*. To view a list of Bluetooth devices that are currently paired with the phone, select *Paired devices*.

Select **Options** to access some of the following functions depending on the status of the device and the Bluetooth connection. Select *Connect* > *Assign short name* or *Auto-conn. without confirmation*.

Bluetooth settings

To define how your phone is shown to other Bluetooth devices, select **Menu** > *Settings* > *Connectivity* > *Bluetooth* > *Bluetooth settings* > *My phone's visibility* or *My phone's name*.

We recommend to use the setting **Hidden** in *My phone's visibility*. Always accept only Bluetooth communication from others that you agree with.

Infrared

You can set up the phone to send and receive data through its infrared (IR) port. To use an IR connection, the device with which you want to establish a connection must be IrDA compliant. You can send or receive data to or from a compatible

phone or data device (for example, a computer) through the IR port of your phone.

Do not point the IR (infrared) beam at anyone's eye or allow it to interfere with other IR devices. This device is a Class 1 laser product.

When sending or receiving data, ensure that the IR ports of the sending and receiving devices are pointing at each other and that there are no obstructions between the devices.

To activate the IR port of your phone to receive data using IR, select **Menu > Settings > Connectivity > Infrared**.

To deactivate the IR connection, select **Menu > Settings > Connectivity > Infrared**. Select **Yes** when the phone displays **Deactivate infrared?**

If data transfer is not started within 2 minutes after the activation of the IR port, the connection is canceled and must be started again.

IR connection indicator

- When **IR** is shown continuously, the IR connection is activated, and your phone is ready to send or receive data through its IR port.

- When **IR** blinks, your phone is trying to connect to the other device, or a connection has been lost.

(E)GPRS

General packet radio service (GPRS) is a network service that allows mobile phones to send and receive data over an Internet protocol (IP)-based network. GPRS is a data bearer that enables wireless access to data networks such as the Internet.


Enhanced GPRS (EGPRS) is similar to GPRS but enables faster connections. For more information on availability of (E)GPRS and data transfer speed, contact your network operator or service provider.


The applications that may use (E)GPRS are MMS, video streaming, browsing sessions, e-mail, remote SyncML, Java application downloading, and the PC dial-up.

When you have selected GPRS as a data bearer, the phone uses EGPRS instead of GPRS if this is available in the network. You cannot select between EGPRS and GPRS, but for some applications you may be able to select GPRS or **GSM data** (circuit switched data, CSD).

(E)GPRS connection

Select **Menu** > **Settings** > **Connectivity** > **GPRS** > **GPRS connection**. Select from the following options:

- **Always online** to set the phone to automatically register to an (E)GPRS network when you switch the phone on.  indicates that the (E)GPRS service is available.

If you receive a call or a text message, or make a call during an (E)GPRS connection,  indicates that the (E)GPRS connection is suspended (on hold).

- **When needed** to set the (E)GPRS registration and connection to established when an application using (E)GPRS needs it and closed when you end the application.

(E)GPRS modem settings

You can connect the phone using Bluetooth wireless technology, infrared, or data cable (DKU-2) connection to a compatible PC and use the phone as a modem to enable (E)GPRS connectivity from the PC.

To define the settings for (E)GPRS connections from your PC, select **Menu** > **Settings** >

Connectivity > **GPRS** > **GPRS modem settings** > **Active access point**, activate the access point you want to use, and select **Edit active access point**. Select **Alias for access point**, enter a name to change the access point settings, and select **OK**. Select **GPRS access point**, enter the access point name (APN) to establish a connection to an (E)GPRS network, and select **OK**.

You can also set the (E)GPRS dial-up service settings (access point name) on your PC using the Nokia Modem Options software. See "**PC Suite**" on page 103. If you have set the settings both on your PC and on your phone, the PC settings are used.

USB data cable

The USB data cable can be used for transferring data between the multimedia card inserted in the phone and a compatible PC, and for PC Suite.

To activate the multimedia card for data transfer, connect the data cable, and when the phone displays **Use phone as storage device?**, select **Accept**. To use the cable for PC Suite, select **Reject**.

To activate the multimedia card when the phone is used for PC Suite, select **Menu** > **Settings** >

Connectivity > USB data cable.
When the phone displays *Use phone as data storage device?*, select **Accept**.

To deactivate the multimedia card transfer function, select **Quit**, and the PC Suite can be used.

Call

Select **Menu > Settings > Call**.
Select from the following options:

- *Call divert* (network service) to divert your incoming calls. You may not be able to divert your calls if some call barring functions are active. See *Call barring service* in "Security" on page 69.
- *Anykey answer > On* and to answer an incoming call by briefly pressing any key, except the power key, the left and right selection keys, or the end key.
- *Automatic redial > On* to make a maximum of ten attempts to connect the call after an unsuccessful call attempt.
- *Speed dialling > On* to dial the names and phone numbers assigned to the speed-dialing keys 2 to 9 by pressing and holding the corresponding number key.
- *Call waiting > Activate* to have the network notify you of an incoming call while you have a call in progress (network service). See "Call waiting" on page 23.
- *Summary after call > On* to briefly display the approximate duration and cost (network service) of the call after each call.
- *Send my caller ID* (network service) > *Yes* or *Set by network*.
- *Line for outgoing calls* (network service) to select the phone line 1 or 2 for making calls if supported by your SIM card.

Phone

Select **Menu > Settings > Phone**.
Select from the following options:

- *Phone language* to set the display language of your phone. If you select *Automatic*, the phone selects the language according to the information on the SIM card.
- *Memory status* to view the amount of free and used memory for each function in the list.

- *Automatic keyguard* to set the keypad of your phone to lock automatically after a pre-set time delay when the phone is in the standby mode and no function of the phone has been used. Select *On*, and you can set the time from 5 seconds to 60 minutes.
- *Security keyguard* to set the phone to ask for the security code when you unlock the keyguard. Enter the security code, and select *On*.



Note: When the keyguard is on, calls still may be possible to the official emergency number programmed into your device.

- *Cell info display* > *On* to receive information from the network operator depending on the network cell used (network service).
- *Welcome note* to write the note you would like to be shown briefly when the phone is switched on.
- *Operator selection* > *Automatic* to set the phone to automatically select one of the cellular networks available in your area. If you select *Manual*, contact your network operator

or service provider to check that the network has a roaming agreement with your home network operator.

- *Confirm SIM service actions*. See "*SIM services*" on page 102.
- *Help text activation* to select whether the phone shows help texts.
- *Start-up tone* to select whether the phone plays a start-up tone when the phone is switched on.

Enhancements

This menu is shown only if the phone is or has been connected to a compatible mobile enhancement.

Select **Menu** > *Settings* > *Enhancements*. You can select an enhancement menu if the corresponding enhancement is or has been connected to the phone. Depending on the enhancement, you can select some of the following options:

- *Default profile* to select the profile that you want to be automatically activated when you connect to the selected enhancement.

- *Automatic answer* to set the phone to answer an incoming call automatically after 5 seconds. If *Incoming call alert* is set to *Beep once* or *Off*, automatic answer is off.
- *Lights* to set the lights permanently *On*. Select *Automatic* to set the lights on for 15 seconds after a key press.
- *Ignition detector* > *On* to automatically switch off the phone approximately 20 seconds after you switch off the car's ignition, when the phone is connected to the full car kit.
- *Text phone* > *Use text phone* > *Yes* to use the text phone settings instead of headset or loopset settings.

Configuration

You can configure your phone with settings that are required for certain services to function correctly. The services are multimedia messaging, instant messaging, synchronization, e-mail application, streaming, push to talk, and browser. Your service provider may also send you these settings. See "[Configuration settings service](#)" on page 11.

For information on availability and the appropriate configuration settings, contact your network operator or service provider.

Select **Menu** > *Settings* > *Configuration*. Select from the following options:

- *Default configuration settings* to view the service providers saved in the phone. Scroll to a service provider, and select **Details** to view the applications that the configuration settings of this service provider supports. To set the configuration settings of the service provider as default settings, select **Options** > *Set as default*. To delete configuration settings, select *Delete*.
- *Activate default in all applications* to activate the default configuration settings for supported applications.
- *Preferred access point* to view the saved access points. Scroll to an access point, and select **Options** > *Details* to view the name of the service provider, data bearer, and GPRS access point or GSM dial-up number.
- *Personal configuration settings* to add new personal

accounts for various services, and to activate or delete them.

To add a new personal account if you have not added any, select **Add**; otherwise, select **Options > Add new**. Select the service type, and select and enter each of the required parameters. The parameters differ according to the selected service type.

To delete or activate a personal account, scroll to it, and select **Options > Delete** or **Activate**.

Security

When security features that restrict calls are in use (such as call barring, closed user group and fixed dialing) calls still may be possible to the official emergency number programmed into your device.

Select **Menu > Settings > Security**. Select from the following options:

- **PIN code request** to set the phone to ask for your PIN code every time the phone is switched on. Some SIM cards do not allow the PIN code request to be turned off.
- **Call barring service** (network service) to restrict incoming

calls to and outgoing calls from your phone. A barring password is required.

- **Fixed dialling** to restrict your outgoing calls to selected phone numbers if this function is supported by your SIM card.
- **Closed user group** (network service) to specify a group of people whom you can call and who can call you.
- **Security level > Phone** to set the phone to ask for the security code whenever a new SIM card is inserted into the phone.

If you select **Memory**, the phone asks for the security code when the SIM card memory is selected and you want to change the memory in use.

- **Access codes** to change the security code, PIN code, PIN2 code, or barring password.

Restore factory settings

To reset some of the menu settings to their original values, select **Menu > Settings > Restore factory settings**. Enter the security code. The data you have entered or downloaded, such as

names and phone numbers saved in *Contacts*, are not deleted.

■ Operator menu

This menu lets you access a portal to services provided by your network operator. The name and the icon depend on the operator. For more information, contact your network operator. If this menu is not shown, the other menu numbers change accordingly.

The operator can update this menu with a service message. For more information, see "Service inbox" on page 99.

■ Gallery



In this menu you can manage graphics, images, recordings, and tones. These files are arranged in folders.

Your phone supports an activation key system to protect acquired content. Always check the delivery terms of any content and activation key before acquiring them, as they may be subject to a fee.

The files stored in *Gallery* use a memory that may have a capacity of approximately 24 MB in the

phone. A compatible MultiMediaCard can be used to extend the memory capacity to store images, themes, graphics, ringing tones, video clips, and sound clips in *Gallery*. It is not possible to store Java games and applications on the MultiMediaCard.

To manage the files and folders:

1. Select **Menu** > *Gallery*. A list of folders is shown. *Images*, *Video clips*, *Music files*, *Themes*, *Graphics*, *Tones*, and *Recordings* are the original folders on the phone. If a multimedia card is inserted in the phone, a multimedia card icon is shown.
2. Scroll to the desired folder. To view a list of files in the folder, select **Open**. Select **Options**, and one of the following options may be available: *Downloads*, *Delete folder*, *Move*, *Rename folder*, *Details*, *Type of view*, *Sort*, *Add folder*, *Memory status*, and *Activation key list*.

With a multimedia card, additional options may be available: *Set password* (to protect the multimedia card against unauthorized use with other devices), *Change*

password, Delete password, Rename mem. card, and Format mem. card.

If you format the multimedia card, all files and folders on it are deleted.

3. Scroll to the file you want to view, and select **Open**. Select **Options** and one of the following functions that may be available for the selected file:
 - *Downloads, Delete, Move, Rename, Apply theme, Set as wallpaper, Set as ring tone, Details, Type of view, Sort, Add folder, Memory status.*
 - *Send* to send the selected file using multimedia messaging, Bluetooth wireless technology, or infrared.
 - *Delete all* to delete all the files and folders in the selected folder.
 - *Edit image* to insert text, a frame, or clip art into the selected picture, or to crop the image.
 - *Open in sequence* to view the files in the folder one by one.

- *Zoom* to increase the size of the image.
- *Mute audio* or *Unmute audio* to mute or unmute the sound file.
- *Set contrast* to adjust the contrast level of the image.
- *Activate content* to update the activation key of the selected file. The option is only shown if the activation key updating is supported by the file.
- *Activation key list* to view the list of all available activation keys. You can delete the activation keys, for example, delete the expired ones.

Copyright protections may prevent some images, ringing tones, and other content from being copied, modified, transferred or forwarded.

Media



Important: Only install and use applications and other software from sources that offer adequate security and protection against harmful software.

Camera

You can take photos or record video clips with the built-in camera. The camera produces pictures in JPEG format and video clips in 3GP format.

Take a photo

1. To open the camera viewfinder, select **Menu** > *Media* > *Camera*.
2. To select the camera mode, scroll right or left, or select **Options** > *Change mode* > *Standard photo*, *Portrait photo*, or *Night mode* if the lighting is dim. To zoom in or out, scroll up or down.
3. To take a photo, select **Capture**. The phone saves the photo in *Gallery* > *Images*.
4. To take another photo, select **Back**; to send the photo as a multimedia message, select **Send**.

Select **Options**, and select from the list of options. Select *Zoom*, and to zoom in or out, scroll right or left.

The Nokia 6230i device supports an image capture resolution of 1280x1024 pixels. The image resolution in these materials may appear different.

Record a video clip

Select **Menu** > *Media* > *Camera* > **Options** > *Change mode* > *Video* > **Record**. To pause the recording, select **Pause**; to resume the recording, select **Contin..** To stop the recording, select **Stop**. The phone saves the recording in *Gallery* > *Video clips*. To change the folder for saving the recordings, see "Camera settings" on page 72.

Camera settings

Select **Menu** > *Media* > *Camera* > **Options** > *Settings*. You can define *Default mode*, *Image quality*, *Image size*, *Video clip length*, *Video clip quality*, *Camera sounds*, *Default title*, and *Image storage*. In *Image storage* you can define the folder where the phone saves your photos and video clips.

Media player

With the media player you can view, play, and download files, such as images, audio, video, and animated images. You can also view compatible streaming videos from a network server (network service).

Select **Menu** > *Media* > *Media player* > *Open gallery*,

Bookmarks, Go to address, or Media downloads.

While streaming audio or video, you can rewind (Rew) or fast forward (FF) by scrolling left or right. To set the length of a scrolling jump, select *FF/Rew interval*.

Set up the phone for a streaming service

You may receive the configuration settings required for streaming as a configuration message from the network operator or service provider. See "Configuration settings service" on page 11. You can also enter the settings manually. See "Configuration" on page 68.

To activate the settings:





1. Select **Menu** > *Media* > *Media player* > *Streaming settings*.
2. Select *Configuration*. Only the configurations that support streaming are shown. Select a service provider, *Default*, or *Personal config*. for streaming.
3. Select *Account* and a streaming service account contained in the active configuration settings.


Music player

Your phone includes a music player for listening to music tracks, recordings, or other MP3, MP4, or AAC sound files that you have transferred to the phone with the Nokia Audio Manager application. MP3 and AAC files are stored in the MMC card or in the *Gallery* folders. Music files stored in the *Music player* folder and in another location, such as a folder of the multimedia card, are automatically detected and added to the default track list.


Play the music tracks transferred to the phone


1. Select **Menu** > *Media* > *Music player*. The details of the first track on the default track list are shown.



To use the graphical keys , , , or  on the display, scroll left or right to the desired key, and select it.

2. To play a track, scroll to the track that you want, and select .

To adjust the volume level, use the volume keys on the side of the phone.

To skip to the beginning of the next track, select . To skip to the beginning of the

previous track, select  twice.

To rewind the current track, select and hold . To fast forward the current track, select and hold . Release the key at the position you want.

3. To stop the playing, select .



Warning: Listen to music at a moderate level. Continuous exposure to high volume may damage your hearing. Do not hold the device near your ear when the loudspeaker is in use, because the volume may be extremely loud.

Music player settings

In the *Music player* menu, the following options may be available:

- *Play via bluetooth* to make a connection to an audio enhancement using a Bluetooth connection.
- *Track list* to view all the tracks available on the track list. To play a track, scroll to the desired track, and select **Play**. Select **Options** > *Refresh all tracks* or *Change track list* to refresh the track list (for

example, after adding new tracks to the list) or to change the track list that is shown when you open the *Music player* menu, if several track lists are available in the phone.

- *Play options* > *Random* > *On* to play the tracks in the track list in random order. Select *Repeat* > *Current track* or *All tracks* to play the current track or the entire track list repeatedly.
- *Media equaliser* to open the list of media equalizer sets. See "*Equalizer*" on page 77.
- *Loudspeaker* or *Headset* to listen to the music player through the loudspeaker or a compatible headset connected to the phone.



Tip: When using a headset, you can skip to the next track by pressing the headset key quickly.

- *Send* to send the selected file using MMS, Bluetooth wireless technology, or an infrared connection.
- *Music downloads* to connect to a browser service related to the current track. This function is only available when the address of the service is included in the track.

- **Memory status** to view the free and used memory capacity.

Radio

The FM radio depends on an antenna other than the wireless device's antenna. A compatible headset or enhancement needs to be attached to the device for the FM radio to function properly.



Warning: Listen to music at a moderate level. Continuous exposure to high volume may damage your hearing. Do not hold the device near your ear when the loudspeaker is in use, because the volume may be extremely loud.

Listen to the radio:

1. Select **Menu > Media > Radio**.
The channel location number, the name of the radio channel (if you have saved the channel), and the frequency of the radio channel are displayed.
To use the graphical keys ▲, ▼, ◀, or ▶ on the display, scroll left or right to the desired key, and select it.
2. If you have already saved radio channels, select ▲ or ▼ to

scroll to the channel you would like to listen to.

You can also select a radio channel location by briefly pressing the corresponding number keys.

Tune a radio channel

1. When the radio is on, select ◀ or ▶ to change the radio frequency in 0.05 MHz steps, or select and hold ◀ or ▶ to start the channel search. Searching stops when a channel is found.
2. To save the channel to a memory location 1 to 9, press and hold the corresponding number key.

To save the channel in the memory location from 10 to 20, press briefly 1 or 2, and press and hold the desired number key 0 to 9.

3. Enter the name of the channel, and select **OK**.

Basic radio functions

When the radio is on:

- To turn off the radio, select **Options > Switch off**.
- To save the radio channel you have found, select **Options > Save channel**. See "**Tune a radio channel**" on page 75. You

can save up to 20 radio channels.

- To set whether the visual radio application is used, select **Options** > *Visual radio sett.*. Some radio channels may send text or graphical information that you can view using the visual radio application.
- To select the options for visual radio, select **Options** > *Visual radio sett.*. To set the visual radio application start automatically when you turn on the radio, select *Enable visual service* > *Automatically*.
- To select the list of saved channels, select **Options** > *Channels*. To delete or rename a channel, or to enter the ID for a visual radio channel, scroll to the desired channel, and select **Options** > *Delete channel*, *Rename*, or *Visual service ID*.
- To listen to the radio in monophonic sound or in stereo, select **Options** > *Mono output* or *Stereo output*.
- To enter the frequency of the desired radio channel, select **Options** > *Set frequency*.
- To listen to the radio using the loudspeaker or headset, select **Options** > *Loudspeaker* or

Headset. Keep the headset connected to the phone. The lead of the headset functions as the radio antenna.

You can normally make a call or answer an incoming call while listening to the radio. During the call, the volume of the radio is muted.

When an application using an (E)GPRS or HSCSD connection is sending or receiving data, it may interfere with the radio.




Voice recorder


You can record pieces of speech, sound, or an active call for up to 60 minutes if there is enough memory available. This is useful when recording a name and phone number for writing them down later.

The recorder cannot be used when a data call or GPRS connection is active.


Record sound

1. Select **Menu** > *Media* > *Recorder*.

To use the graphical keys , , or  on the display, scroll left or right to the desired key, and select it.

2. To start the recording, select . To start the recording

during a call, select **Options** > **Record**. While recording a call, all parties to the call hear a faint beeping sound approximately every 5 seconds. When recording a call, hold the phone in the normal position near to your ear.

3. To end the recording, select . The recording is saved in **Gallery** > **Recordings**.
4. To listen to the latest recording, select **Options** > **Play last recorded**.
5. To send the last recording using infrared, Bluetooth, or a multimedia message, select **Options** > **Send last recorded**.

List of recordings

Select **Menu** > **Media** > **Recorder** > **Options** > **Recordings list**. The list of folders in the **Gallery** is shown. Open **Recordings** to see the list with recordings. Select **Options** to select options for files in the **Gallery**. See "Gallery" on page 70.

Define a storage folder

To use another folder than **Recordings** as the default folder in **Gallery**, select **Menu** > **Media** > **Recorder** > **Options** > **Select memory**. Scroll to a folder, and select **Set**.

Equalizer

You can control the sound quality when using the music player by amplifying or diminishing frequency bands.

Select **Menu** > **Media** > **Equaliser**.

To activate a set, scroll to one of the equalizer sets, and select **Activate**.

To view, edit, or rename a selected set, select **Options** > **View**, **Edit**, or **Rename**. Not all sets can be edited or renamed.

Push to talk



Push to talk over cellular (PTT) is a two-way radio service available over a GSM/GPRS cellular network (network service). Push to talk provides direct voice communication connected with the push of the volume up key.

You can use push to talk to have a conversation with one person or with a group of people having compatible devices. When your call is connected, the person or group you are calling does not have to answer the phone. The participants should confirm the reception of any communications where appropriate, as there is no

other confirmation whether the recipients have heard the call.

To check availability and costs, and to subscribe to the service, contact your network operator or service provider. Roaming services may be more limited than for normal calls.

Before you can use the push to talk service, you must define the required push to talk service settings. See "[Push to talk settings](#)" on page 83.

While you are connected to the push to talk service, you can use the other functions of the phone. The push to talk over cellular service is not connected to traditional voice communication, and therefore many of the services available for traditional voice calls (for example, voice mailbox) are not available for push to talk over cellular communications.



Push to talk menu

Select **Menu** > [Push to talk](#).

- To connect to or disconnect from the push to talk service, select [Switch PTT on](#) or [Switch PTT off](#).
- To view the received callback requests, select [Callback inbox](#).
- To view the list of push to talk groups, select [Group list](#).

- To view the list of contacts to which you have added the push to talk address received from the service provider, select [Contacts list](#).
- To add a new push to talk group to the phone, select [Add group](#).
- To set the push to talk settings for use, select [Push to talk settings](#).
- To set the required settings for the push to talk connection, select [Configuration settings](#).
- To open the browser and to connect to the push to talk network portal provided by the service provider, select [Web](#).

Connect to and disconnect from the push to talk service

To connect to the push to talk service, select **Menu** > [Push to talk](#) > [Switch PTT on](#).  indicates the push to talk connection.  indicates that the service is temporarily unavailable. The phone automatically tries to reconnect to the service until you disconnect from the push to talk service. If you have added groups to the phone, you are automatically joined to the active ([Default](#) or [Listened](#)) groups, and

the name of the default group is displayed in the standby mode.

To disconnect from the push to talk service, select *Switch PTT off*.

Make and receive a push to talk call

Set the phone to use the loudspeaker or earpiece for push to talk communication. When the earpiece is selected, you can use the phone normally, by holding it to your ear.



Warning: Do not hold the device near your ear when the loudspeaker is in use, because the volume may be extremely loud.

When connected to the push to talk service, you can make or receive group calls or one-to-one calls. One-to-one calls are calls you make to only one person.

Make a group call

To make a call to the default group, press the volume up key. A tone sounds indicating that the access is granted, and the phone displays your nickname and group name.

To make a call to a nondefault group, select *Group list* in the push to talk menu, scroll to the

desired group, and press the volume up key.

Press and hold the volume up key the entire time you are talking, and hold the phone in front of you so that you can see the display. When you have finished, release the volume up key. Talking is allowed on a first-come, first-served basis. When someone stops talking, the first person to press the volume up key can talk next.

Make a one-to-one call

- To start a one-to-one call from the list of contacts to which you have added the push to talk address, select *Contacts list*. Scroll to a contact, and press the volume up key.

You can also select the contact from *Contacts*.

- To start a one-to-one call from the list of push to talk groups, select *Group list*, and scroll to the desired group. Select **Options** > *Active members*, scroll to the desired contact, and press the volume up key.
- To start a one-to-one call from the list of callback requests you have received, select *Callback inbox*. Scroll to the desired nickname, and press the volume up key.

Receive a group or a one-to-one call

A short tone notifies you of an incoming group and one-to-one call. When receiving a group call, the group name and the nickname of the caller are displayed. When receiving a one-to-one call from a person whose information you have saved in *Contacts*, the saved name is displayed if identified; otherwise, only the nickname of the caller is displayed.

You can either accept or reject an incoming one-to-one call if you have set the phone to first notify you of the one-to-one calls.

If you press the volume up key to try to respond to a group while another member is talking, you hear a queuing tone, and *Queuing* is displayed as long as you press the volume up key. Press and hold the volume up key, and wait for the other person to finish, then you can talk.

Callback requests

If you make a one-to-one call and do not get a response, you can send a request for the person to call you back.

When someone sends you a callback request, *Callback request received* is displayed in the

standby mode. When you receive a callback request from someone who is not in your contacts list, you can save the name to your contacts.

Send a callback request

You can send a callback request in the following ways:

- To send a callback request from the contacts list in the *Push to talk* menu, select *Contacts list*. Scroll to a contact, and select **Options** > *Send callback*.
- To send a callback request from *Contacts*, search for the desired contact, select **Options** > *Contact details*, scroll to the push to talk address, and select **Options** > *Send callback*.
- To send a callback request from the group list in the *Push to talk* menu, select *Group list*, and scroll to the desired group. Select **Options** > *Active members*, scroll to the desired contact, and select **Options** > *Send callback*.
- To send a callback request from the callback request list in the *Push to talk* menu, select *Callback inbox*. Scroll to a contact, and select **Options** > *Send callback*.

Respond to a callback request

1. To open the *Callback inbox*, select **View**. The list of nicknames of the persons who have sent you callback requests is shown.
2. To make a one-to-one call, press the volume up key.
3. To send a call request back to the sender, select **Options** > *Send callback*.
To delete the request, select **Delete**.

Save the callback request sender

1. To open the *Callback inbox*, select **View**. The list of nicknames of the persons who have sent you callback requests is shown.
2. To view the sender's push to talk address, select **Options** > *View PTT address*.

To save a new contact or to add the push to talk address to a contact, select **Options** > *Save as* or *Add to contact*.

Add a one-to-one contact

You can save the names of persons to whom you often make one-to-one calls in the following ways:

- To add a push to talk address to a name in *Contacts*, search for the desired contact, and select **Options** > *Add detail* > *PTT address*.
- To add a contact to the push to talk contacts list, select **Menu** > *Push to talk* > *Contacts list* > **Options** > *Add contact*.
- To add a contact from the group list, connect to the push to talk service, select *Group list*, and scroll to the desired group. Select **Options** > *Active members*. Scroll to the member whose contact information you want to save, and select **Options**. To add a new contact, select *Save as*. To add a push to talk address to a name in *Contacts*, select *Add to contact*.

Create and set up groups

When you call a group, all members joined to the group hear the call simultaneously.

Each member in the group is identified by a nickname, which is shown as a caller identification. Group members can choose a nickname for themselves in each group.

Groups are registered with a URL address. One user registers the group URL in the network by joining the group session the first time.

There are three types of push to talk groups:

- Provisioned groups are closed groups that allow only selected participants provisioned by the service provider to join.
- Ad hoc groups are groups that the users can create. You can create your own group, and invite members to the group.
- Ad hoc pro groups are groups you can create from members in a provisioned group. For example, a business can have a closed group and separate groups created for certain business functions.

Add a group

1. Select **Menu** > *Push to talk* > *Add group* > *Guided*.
2. To set the security level for the group, select *Public group* or *Private group*.

If you select *Private group*, the phone automatically creates a scrambled part to the group address that the members cannot view when they receive the invitation to the group.

Only the person who creates the private group can invite more members to the group.

3. Enter the name for the group, and select **OK**.
4. Select the status for the group: *Default*, *Listened*, or *Inactive*. The phone indicates that the group is saved and its status. *Default* and *Listened* are active groups. When you press the volume up key to make a group call, the default group is called if you have not scrolled to any other group or contact.
5. To send an invitation to the group, select **Yes** when the phone requests it. You can send the invitation using a text message or infrared.

The members you invite to the public groups can also invite more members to the group.

Receive an invitation

1. When you receive a text message invitation to a group, *Group invitation received*: is displayed.
2. To view the nickname of the person who sent the invitation and the group address if the group is not a private group, select **View**.

- To add the group to your phone, select **Save**. To set the status for the group, select *Default*, *Listened*, or *Inactive*.

To reject the invitation, select **Exit** > **Yes**, or select **View** > **Discard** > **Yes**.

Push to talk settings

There are two kinds of push to talk settings: settings for connecting to the service and settings for use.

You may receive the settings for connecting to the service from your network operator or service provider. See "[Configuration settings service](#)" on page 11. You can enter the settings manually. See "[Configuration](#)" on page 68.

To select the settings for connecting to the service, select **Menu** > *Push to talk* > *Configuration settings*. Select from the following options:

- Configuration* to select a service provider, *Default*, or *Personal config*. for push to talk service. Only the configurations that support the push to talk service are shown.
- Account* to select a push to talk service account contained in the active configuration settings.

- You can also select from the following options: *Push to talk user name*, *Default nickname*, *Push to talk password*, *Domain*, and *Server address*.

To edit the push to talk settings for use, select **Menu** > *Push to talk* > *Push to talk settings*.

- To select the phone to allow the reception of incoming one-to-one calls, select *1 to 1 calls* > *On*. To make but not receive one-to-one calls, select *Off*. The service provider may offer some services that override these settings. To set the phone to first notify you of incoming one-to-one calls with a ringing tone, select *Notify*.
- To activate the listened groups, select *Listened groups* > *On*.
- To set the phone to automatically connect to the push to talk service when you switch the phone on, select *Push to talk status in startup* > *Yes*.
- To hide your push to talk address from group and one-to-one calls, select *Send my push to talk address* > *No*.

■ Organizer



Alarm clock

You can set the phone to alarm at a desired time. Select **Menu > Organizer > Alarm clock**.

To set the alarm, select **Alarm time**, enter the alarm time, and select **OK**. To change the alarm time when the alarm time is set, select **On**.

To set the phone to alert you on selected days of the week, select **Repeat alarm**.

To select the alarm tone or set a radio channel as the alarm tone, select **Alarm tone**. If you select the radio as an alarm tone, connect the headset to the phone. The phone uses the last channel you listened to as the alarm, and the alarm plays through the loudspeaker. If you remove the headset or switch off the phone, the default alarm tone replaces the radio.

To set the time-out for the snooze alert, select **Snooze time-out** and the time.

When the alarm time expires

The phone sounds an alert tone, and flashes **Alarm!** and the current time on the display, even if the phone was switched off. To stop

the alarm, select **Stop**. If you let the phone continue to sound the alarm for a minute or select **Snooze**, the alarm stops for the time you have set in **Snooze time-out**, and then resumes.

If the alarm time is reached while the device is switched off, the device switches itself on and starts sounding the alarm tone. If you press **Stop**, the device asks whether you want to activate the device for calls. Press **No** to switch off the device or **Yes** to make and receive calls. Do not press **Yes** when wireless phone use may cause interference or danger.

Calendar

Select **Menu > Organizer > Calendar**.






The current day is indicated by a frame. If there are any notes set for the day, the day is in bold type. To view the day notes, select **View**. To view a week, select **Options > Week view**. To delete all notes in the calendar, select the month or week view, and select **Options > Delete all notes**.

Other options for the calendar day view can make a note; delete, edit, move, or repeat a note; copy a note to another day; send a note with Bluetooth technology; or


send a note to the calendar of another compatible phone as a text message or multimedia message. In *Settings* you can set the date, time, time zone, date or time format, date separator, default view, or the first day of the week. In the *Auto-delete notes* option you can set the phone to delete old notes automatically after a specified time.

Make a calendar note

Select **Menu** > *Organiser* > *Calendar*. Scroll to the date you want, select **Options** > *Make a note*, and select one of the following note types:

 *Meeting*,  *Call*,  *Birthday*,  *Memo*, or  *Reminder*.

When the phone sounds an alarm for a note

The phone beeps, and displays the note. With a call note  on the display, you can call the displayed number by pressing the call key. To stop the alarm and to view the note, select **View**. To stop the alarm for 10 minutes, select **Snooze**.

To stop the alarm without viewing the note, select **Exit**.

To-do list

You can save a note for a task that you must do.

Select **Menu** > *Organiser* > *To-do list*.

To make a note if no note is added, select **Add**; otherwise, select **Options** > *Add*. Write the note, select **Save** and the priority, and set the deadline and alarm for the note.

To view a note, scroll to it, and select **View**.

You can also select an option to delete the selected note and delete all the notes that you have marked as done. You can sort the notes by priority or by deadline, send a note to another phone as a text message or a multimedia message, save a note as a calendar note, or access the calendar.

While viewing a note, you can also select an option to edit the deadline or priority for the note, or mark the note as done.

Notes

You can use this function for writing and sending notes.

Select **Menu** > *Organiser* > *Notes*. To make a note if no note is added, select **Add**; otherwise,

select **Options** > *Make a note*. Write the note, and select *Save*.

Other options include deleting and editing a note. While editing a note, you can also exit the text editor without saving the changes. You can send the note to compatible devices through infrared, Bluetooth wireless technology, text message, or a multimedia message. If the note is too long to be sent as a text message, the phone asks you to delete the appropriate number of characters from your note.

Wallet

In *Wallet*, you can save personal information, such as credit card numbers, addresses, and access codes to services that require a user name and password. You can easily retrieve the information in the wallet to fill in online forms, if the service supports it.

The first time you access the wallet, you define the wallet code that protects your encrypted data. At *Create wallet code*: enter the code, and select **OK** to confirm. At *Verify wallet code*: enter the code again, and select **OK**. See also "[Wallet code](#)" on page 11.

If you want to delete all the content of the wallet and the

wallet code, enter *#7370925538# (*#res wallet# in letters) in the standby mode. You also need the security code of the phone; see "[Security code](#)" on page 10.

To add or edit contents, open the *Wallet* menu. To use the content of the wallet in a mobile service, access the wallet from the browser. See "[Web](#)" on page 94.

Access the wallet menu

To access the wallet menu, select **Menu** > *Organiser* > *Wallet*. Enter your wallet code, and select **OK**; see "[Wallet settings](#)" on page 88. Select from the following options:

- *Wallet profiles* to create card combinations for different services. A wallet profile is helpful if the service asks you to fill in many data items. You can select the appropriate wallet profile instead of selecting different cards separately.
- *Cards* to save personal card information. You can save payment card, loyalty card, and access card information, such as user name and password combinations for different services, addresses, and user

data. See "[Save card details](#)" on page 87.

- *Tickets* to save the notifications of e-tickets that you bought through a mobile service. To view the tickets, select **Options** > *View*.
- *Receipts* to save receipts of mobile purchases.
- *Personal notes* to save all kinds of personal information that you want to keep protected by the wallet PIN code. See "[Personal notes](#)" on page 87.
- *Settings* to modify wallet settings. See "[Wallet settings](#)" on page 88.

Save card details

Access the wallet, and select *Cards*. Select the card type to save details: *Payment cards*, *Loyalty cards*, *Access cards*, *User info cards*, or *Address cards*. If no card is added, select **Add**; otherwise, select **Options** > *Add new*. Fill in the fields for the details.

If supported by your service provider, you can also receive card information to your phone as a configuration message. You are notified of the card category. For availability of receiving card information as configuration

settings, contact the card issuer or service provider.

Personal notes

You can save personal notes, such as account numbers, passwords, or codes.

1. Access the wallet, and select *Personal notes*. If no note is added, select **Add**; otherwise, select **Options** > *Add new*. Enter the note and a title for it. Select **Options** to edit a selected note; sort notes by name or date; or delete notes.
2. To view a note, scroll to it, and select **View**.
3. When viewing a note, select **Edit** to edit it. Select **Options** and from the following options:
 - *Send via text msg.* to copy the note as a text message.
 - *Copy to calendar* to copy the note to the calendar as a memo.
 - *Use detail* to extract numbers, e-mail addresses, and Web addresses from a note.
 - *Delete* to delete the note.

Create a wallet profile

When you have saved your personal card details, you can

combine them together into a wallet profile. You can use the profile to retrieve wallet data from different cards while browsing.

1. Access the wallet, and select *Wallet profiles*.
2. To create a new wallet profile if no profile is added, select **Add**. Otherwise, select **Options > Add new**.
3. Fill in the following fields.

Some of the fields contain data that is selected from the wallet. You must save this data before you can create a wallet profile.

- *Select payment card next* and select a card from the payment card list.
- *Select loyalty card next* and select a card from the loyalty card list.
- *Select access card next* and select a card from the access card list.
- *Select user info card next* and select a card from the user data card list.
- *Select billing address next* and select an address from the address card list.
- *Select shipping address next* and select an address from the address card list.

- *Select receipt delivery address next* and select an address from the address card list.
- *Select receipt delivery method next* and select the means of delivery: *To phone number* or *To e-mail address*.
- *Wallet profile name*: enter a name for the profile.

Wallet settings

Access the wallet, and select *Settings*. To change the wallet code, select *Change code*. To set the radio frequency identification (RFID) code and type, select *RFID > RFID code* and *RFID type*. RFID is technology that helps secure your commercial transactions.

Guidelines for making purchases with the wallet

- To do your shopping, access the desired Web site that supports the wallet. The service must support the Electronic Commerce Modeling Language specification. See "[Connect to a service](#)" on page 95. Choose the product you want to buy and read carefully all provided information before your purchase.

The text may not fit within a single screen. Therefore, make sure to scroll through and read all of the text before your purchase.

- To pay for the items you wish to buy, the phone asks whether you want to use the wallet. The phone also asks for your wallet PIN code.
- Select the card you want to pay with from the *Payment cards* list. If the data form you receive from the service provider supports the Electronic Commerce Modeling Language specification, the phone automatically fills in the credit card information or the wallet profile from the wallet.
- Approve the purchase, and the information is forwarded.
- You may receive an acknowledgement or a digital receipt of the purchase.
- To close the wallet, select *Close wallet*. If you do not use the wallet for 5 minutes, it closes automatically.

If you have tried to access or have accessed confidential information requiring passwords (for example your bank account), empty the cache of your phone after each use.

To empty the cache, see "[Cache memory](#)" on page 100.

Synchronization

Synchronization allows you to save your calendar and contacts data on a remote Internet server (network service) or on a compatible PC. If you have saved data on the remote Internet server, you can synchronize your phone by starting the synchronization from your phone. You can also synchronize the data in the phone contacts, calendar, and notes to correspond with the data of your compatible PC by starting the synchronization from the PC. The contact data in your SIM card is not synchronized.

Answering an incoming call during synchronization ends the synchronization, and you must restart it.

Synchronize from your phone

Before synchronizing from your phone, you must do the following:

- Subscribe to a synchronization service. For details, contact your service provider.
- Retrieve the synchronization settings from your service provider. See "[Synchronization settings](#)" on page 90.

To start the synchronization from your phone:

1. Select the configuration settings you need for the synchronization. See "[Synchronization settings](#)" on page 90.
2. Select **Menu** > *Organiser* > *Sync* > *Server sync* > *Data to be synchronised*. Mark the data to be synchronized.
3. Select **Menu** > *Organiser* > *Sync* > *Server sync* > *Synchronise*. The marked data of the active set is synchronized after confirmation.

Synchronizing for the first time or after an interrupted synchronization may take up to 30 minutes to complete, if the contacts or calendar are full.

Synchronization settings

You may receive the configuration settings required for synchronization as a configuration message from the network operator or service provider. To manage the configuration settings, see "[Configuration](#)" on page 68.

1. Select **Menu** > *Organiser* > *Sync*.

2. Select *Server sync* > *Sync settings* and from the following options:

Configuration. Only the configurations that support the synchronization are shown.

Select a service provider, *Default*, or *Personal config*. for synchronization.

Account. Select a synchronization service account contained in the active configuration settings.

3. Select *PC sync settings* to enter the settings for server alerted synchronization. Set the *User name* and *Password*.

The user name and password must be the same in the phone and in the PC.

Synchronize from a compatible PC

To synchronize contacts, the calendar, and the notes from a compatible PC, use an infrared, Bluetooth, or data cable connection. You also need Nokia PC Suite software of your phone installed on the PC. Start the synchronization from the PC using Nokia PC Suite.

■ Applications



Games

Your phone software includes some games.

Launch a game

Select **Menu** > *Applications* > *Games*. Scroll to the desired game, and select **Open**, or press the call key.

For options related to a game, see "Other application options" on page 91.

Game downloads

Select **Menu** > *Applications* > **Options** > *Downloads* > *Game downloads*. The list of available bookmarks is shown. Select *More bookmarks* to access the list of bookmarks in the *Web* menu; see "Bookmarks" on page 98.



Important: Only install and use applications and other software from sources that offer adequate security and protection against harmful software.

Game settings

To set sounds, lights, and shakes for the game, select **Menu** > *Applications* > **Options** > *Application settings*.

Collection

Your phone software includes some Java™ applications specially designed for this Nokia phone.

Launching an application

Select **Menu** > *Applications* > *Collection*. Scroll to an application, and select **Open**, or press the call key.

Other application options

- *Delete* to delete the application or application set from the phone.
- *Details* to give additional information about the application.
- *Update version* to check if a new version of the application is available for download from *Web* (network service).
- *Web page* to provide further information or additional data for the application from an Internet page. This feature must be supported by the network. It is only shown if an Internet address has been provided with the application.
- *Application access* to restrict the application from accessing the network. Different categories are shown. Select in each category, if available, one of the following permissions:

Ask every time and the phone asks always for network access, *Ask first time only* and the phone asks on first attempt to network access, *Always allowed* to allow the network access, or *Not allowed* to not allow the network access.

Download an application

Your phone supports J2ME™ Java applications. Make sure that the application is compatible with your phone before downloading it.



Important: Only install and use applications and other software from sources that offer adequate security and protection against harmful software.

You can download new Java applications in different ways:

- Select **Menu** > *Applications* > **Options** > *Downloads* > *App. downloads*, and the list of available bookmarks is shown. Select *More bookmarks* to access the list of bookmarks in the *Web* menu. See "[Bookmarks](#)" on page 98.

Select the appropriate bookmark to connect to the desired page. If the connection fails, you may not be able to access the page from the

service whose connection settings are currently active. In this case, access the *Web* menu, and activate another set of service settings. See "[Connect to a service](#)" on page 95. Try again to connect to the page.

For the availability of different services, pricing, and tariffs, contact your service provider.

- Select **Menu** > *Web* > *Download links*. Select to download an appropriate application or game. See "[Download files](#)" on page 99.
- Use the game download function. See "[Game downloads](#)" on page 91.
- Use the Nokia Application Installer from PC Suite to download the applications to your phone.

Your device may have some bookmarks loaded for sites not affiliated with Nokia. Nokia does not warrant or endorse these sites. If you choose to access them, you should take the same precautions, for security or content, as you would with any Internet site.

When downloading an application, it may be saved in the *Games* menu instead of the *Applications* menu. It is not

possible to store Java games and applications on the MultiMediaCard.

Calculator

The calculator in your phone adds, subtracts, multiplies, divides, calculates the square and the square root, and converts currency values.



Note: This calculator has limited accuracy and is designed for simple calculations.

Select **Menu** > *Applications* > *Extras* > *Calculator*. When 0 is displayed on the screen, enter the first number in the calculation. Press # for a decimal point. Select **Options** > *Add, Subtract, Multiply, Divide, Square, Square root, or Change sign*. Enter the second number. For a total, select **Equals**. To start a new calculation, first select and hold **Clear**.

Convert currency

Select **Menu** > *Applications* > *Extras* > *Calculator*. To save the exchange rate, select **Options** > *Exchange rate*. Select either of the displayed options. Enter the exchange rate, press # for a decimal point, and select **OK**. The exchange rate remains in the memory until you replace it with

another one. To perform the currency conversion, enter the amount to be converted, and select **Options** > *In domestic or In foreign*.



Note: When you change base currency, you must key in the new rates because all previously set exchange rates are set to zero.

Countdown timer

Select **Menu** > *Applications* > *Extras* > *Countdown timer*. Enter the alarm time in hours, minutes, and seconds, and select **OK**. If you wish, write your own note text that is displayed when the time expires. To start the countdown timer, select **Start**. To change the countdown time, select *Change time*. To stop the timer, select *Stop timer*.

If the alarm time is reached when the phone is in the standby mode, the phone sounds a tone and flashes the note text if it is set or *Countdown time up*. Stop the alarm by pressing any key. If no key is pressed, the alarm automatically stops within 30 seconds. To stop the alarm and to delete the note text, select **Exit**. To restart the countdown timer, press **Restart**.

Stopwatch

You can measure time, take intermediate times, or take lap times using the stopwatch. During timing, the other functions of the phone can be used. To set the stopwatch timing in the background, press the end key.

Using the stopwatch or allowing it to run in the background when using other features increases the demand on battery power and reduces the battery life.

Select **Menu > Applications > Extras > Stopwatch** and from the following options:

- **Split timing** to take intermediate times. To start the time observation, select **Start**. Select **Split** every time that you want to take an intermediate time. To stop the time observation, select **Stop**.

To save the measured time, select **Save**.

To start the time observation again, select **Options > Start**. The new time is added to the previous time. To reset the time without saving it, select **Reset**.

To set the stopwatch timing in the background, press the end key.

- **Lap timing** to take lap times. To set the stopwatch timing in the background, press the end key.
- **Continue** to view the timing that you have set in the background.
- **Show last** to view the most recently measured time if the stopwatch is not reset.
- **View times** or **Delete times** to view or delete the saved times.

Web



You can access various mobile Internet services with your phone browser.



Important: Use only services that you trust and that offer adequate security and protection against harmful software.

Check the availability of these services, pricing, tariffs, and instructions with your service provider.

With the phone browser you can view the services that use wireless markup language (WML) or extensible hypertext markup language (XHTML) on their pages. Appearance may vary due to screen size. You may not be able to

view all details of the Internet pages.

Basic steps to access and use services

1. Save the service settings that are required to access the service that you want to use. See "[Set up browsing](#)" on page 95.
2. Make a connection to the service. See "[Set up browsing](#)" on page 95.
3. Start browsing the pages of the service. See "[Browse pages](#)" on page 96.
4. When you finish browsing, end the connection to the service. To disconnect, see "[Options while browsing](#)" on page 96.

Set up browsing

You may receive the configuration settings required for browsing as a configuration message from the network operator or service provider that offers the service that you want to use. See "[Configuration settings service](#)" on page 11. You can also enter all the configuration settings manually. See "[Configuration](#)" on page 68.

Connect to a service

First, ensure that the correct configuration settings of the service that you want to use are activated.

1. To select the settings for connecting to the service, select **Menu** > *Web* > *Settings* > *Configuration settings*.
2. Select *Configuration*. Only the configurations that support browsing service are shown. Select a service provider, *Default*, or *Personal config*. for browsing. See "[Set up browsing](#)" on page 95.

Select *Account* and a browsing service account contained in the active configuration settings.

Select *Display terminal window* > *Yes* to perform manual user authentication for intranet connections.

Secondly, make a connection to the service in one of the following ways:

- Select **Menu** > *Web* > *Home*; or in the standby mode, press and hold 0.
- To select a bookmark of the service, select **Menu** > *Web* > *Bookmarks*.



- To select the last URL, select **Menu** > **Web** > **Last web address**.
- To enter the address of the service, select **Menu** > **Web** > **Go to address**. Enter the address of the service, and select **OK**.
- To select a highlighted item, press the call key, or select **Select**.
- To enter letters and numbers, press the keys 0 to 9. To enter special characters, press *.

Options while browsing

Select from the following options:

Browse pages

After you make a connection to the service, you can start browsing its pages. The function of the phone keys may vary in different services. Follow the text guides on the phone display. For more information, contact your service provider.

If GPRS is selected as the data bearer,  is shown on the top left of the display during browsing. If you receive a call or a text message, or make a call during an (E)GPRS connection,  is shown on the top right of the display to indicate that the (E)GPRS connection is suspended (on hold). After a call the phone tries to reconnect the (E)GPRS connection.

Browse with phone keys

- Scroll in any direction to browse through the page.
- **Use wallet info** to use the wallet card information from the application if the service page supports the wallet. See "Wallet" on page 86.
- **Home** to return to your start page.
- **Shortcuts** to open a new list of options that are specific to the page. This option is only available if the page contains shortcuts.
- **Add bookmark** to save the page as a bookmark.
- **Bookmarks** to access the list of bookmarks. See "Bookmarks" on page 98.
- **Page options** to show the list of options for the active page.
- **History** to get a list showing the last visited URLs.
- **Download links** to show the list of bookmarks for downloading.

- *Other options* to show a list of other options.
- *Reload* to reload and update the current page.
- *Quit* to disconnect from a service.

The service provider may also offer other options.

If you have tried to access or have accessed confidential information requiring passwords (for example, your bank account), empty the cache of your phone after each use.

To empty the cache, see "[Cache memory](#)" on page 100.

Direct calling

The browser supports functions that you can access while browsing. You can make a phone call, send DTMF tones while a voice call is in progress, and save a name and a phone number from a page.

Appearance settings

While browsing, select **Options** > *Other options* > *Appearance settings*, or in the standby mode, select **Menu** > *Web* > *Settings* > *Appearance settings*. Select from the following options:

- *Text wrapping* > *On* to set the text to continue on the next

line on the display. If you select *Off*, the text is abbreviated.

- *Font size* > *Extra small*, *Small*, or *Medium* to set the font size.
 - *Show images* > *No* to hide pictures on the page. This can speed up the browsing of pages that contain a lot of pictures.
 - *Alerts* > *Alert for unsecure connection* > *Yes* to set the phone to alert when a secure connection changes to an unsecure one during browsing.
- Alerts* > *Alert for unsecure items* > *Yes* to set the phone to alert when a secure page contains an unsecure item. These alerts do not guarantee a secure connection. For more information, see "[Browser security](#)" on page 100.
- *Character encoding* > *Content encoding* to select the encoding for the browser page content.

Character encoding > *Unicode (UTF-8) web addresses* > *On* to set the phone to send a URL as a UTF-8 encoding. You may need this setting when you access a Web page created in foreign language.

Cookies

A cookie is data that a site saves in the cache memory of your phone. Cookies are saved until you clear the cache memory. See "[Cache memory](#)" on page 100.

While browsing, select **Options** > *Other options* > *Security* > *Cookie settings*, or in the standby mode, select **Menu** > *Web* > *Settings* > *Security settings* > *Cookies*. To allow or prevent the phone from receiving cookies, select *Allow* or *Reject*.

Scripts over secure connection

You can select whether to allow the running of scripts from a secure page. The phone supports WML scripts.

1. While browsing, select **Options** > *Other options* > *Security* > *Script settings*, or in the standby mode, select **Menu** > *Web* > *Settings* > *Security settings* > *Scripts over secure connection*.
2. To allow the scripts, select *Allow*.

Bookmarks

You can save page addresses as bookmarks in the phone memory.

1. While browsing, select **Options** > *Bookmarks*; or in the standby mode, select **Menu** > *Web* > *Bookmarks*.
2. Scroll to a bookmark, and select it, or press the call key to make a connection to the page associated with the bookmark.
3. Select **Options** to view, edit, delete, or send the bookmark; to create a new bookmark; or to save the bookmark to a folder.

Your device may have some bookmarks loaded for sites not affiliated with Nokia. Nokia does not warrant or endorse these sites. If you choose to access them, you should take the same precautions, for security or content, as you would with any Internet site.

Receive a bookmark

When you have received a bookmark that is sent as a bookmark, *1 bookmark received* is displayed. To save the bookmark, select **Show** > **Save**. To view or delete the bookmark, select **Options** > *View* or *Delete*. To discard the bookmark directly after you have received the bookmark, select **Exit** > **OK**.

Download files

To download more tones, images, games, or applications to your phone (network service), select **Menu** > **Web** > **Download links** > *Tone downloads*, *Graphic downloads*, *Game downloads*, *Video downloads*, *Theme downloads*, or *App. downloads*.



Important: Only install and use applications and other software from sources that offer adequate security and protection against harmful software.

Service inbox

The phone is able to receive service messages (pushed messages) sent by your service provider (network service). Service messages are notifications of, for example, news headlines, and they may contain a text message or an address of a service.

To access the *Service inbox* in the standby mode, when you have received a service message, select **Show**. If you select **Exit**, the message is moved to the *Service inbox*. To access the *Service inbox* later, select **Menu** > **Web** > *Service inbox*.

To access the *Service inbox* while browsing, select **Options** > *Other options* > *Service inbox*. Scroll to the message you want, and to activate the browser and download the marked content, select **Retrieve**. To display detailed information on the service notification, or to delete the message, select **Options** > *Details* or *Delete*.

Service inbox settings

Select **Menu** > **Web** > **Settings** > *Service inbox settings*.

- To set whether you want to receive service message, select *Service messages* > *On* or *Off*.
- To set the phone to receive service messages only from content authors approved by the service provider, select *Message filter* > *On*. To view the list of the approved content authors, select *Trusted channels*.
- To set the phone to automatically activate the browser from the standby mode when the phone has received a service message, select *Automatic connection* > *On*. If you select *Off*, the phone activates the browser only after you select

Retrieve when the phone has received a service message.

Cache memory

A cache is a memory location that is used to store data temporarily. If you have tried to access or have accessed confidential information requiring passwords, empty the cache after each use. The information or services you have accessed is stored in the cache.

To empty the cache:

- While browsing, select **Options** > *Other options* > *Clear the cache*.
- In the standby mode, select **Menu** > *Web* > *Clear the cache*.

Browser security

Security features may be required for some services, such as online banking or shopping. For such connections you need security certificates and possibly a security module, which may be available on your SIM card. For more information, contact your service provider.

Security module

The security module improves security services for applications requiring a browser connection,

and allows you to use a digital signature. The security module may contain certificates as well as private and public keys. The certificates are saved in the security module by the service provider.

Select **Menu** > *Web* > *Settings* > *Security settings* > *Security module settings*. Select from the following options:

- *Security module details* to show the security module title, status, manufacturer, and serial number.
- *Module PIN request* to set the phone to ask for the module PIN when using services provided by the security module. Enter the code, and select *On*. To disable the module PIN request, select *Off*.
- *Change module PIN* to change the module PIN, if allowed by the security module. Enter the current module PIN code, then enter the new code twice.
- *Change signing PIN* to change the signing PIN code for the digital signature. Select the signing PIN you want to change, enter the current PIN code, then enter the new code twice.

See also "[Access codes](#)" on page 10.

Certificates




Important: Note that even if the use of certificates makes the risks involved in remote connections and software installation considerably smaller, they must be used correctly in order to benefit from increased security. The existence of a certificate does not offer any protection by itself; the certificate manager must contain correct, authentic, or trusted certificates for increased security to be available. Certificates have a restricted lifetime. If Expired certificate or Certificate not valid yet is shown even if the certificate should be valid, check that the current date and time in your device are correct.

Before changing any certificate settings, you must make sure that you really trust the owner of the certificate and that the certificate really belongs to the listed owner.

There are three kinds of certificates: server certificates, authority certificates, and user certificates. You may receive these

certificates from your service provider. Authority certificates and user certificates may also be saved in the security module by the service provider.

To view the list of the authority or user certificates downloaded into your phone, select **Menu > Web > Settings > Security settings > Authority certificates** or **User certificates**.

The security indicator  is displayed during a connection, if the data transmission between the phone and the content server is encrypted.


The security icon does not indicate that the data transmission between the gateway and the content server (or place where the requested resource is stored) is secure. The service provider secures the data transmission between the gateway and the content server.

Digital signature

You can make digital signatures with your phone if your SIM card has a security module. Using the digital signature can be the same as signing your name to a paper bill, contract, or other document.

To make a digital signature, select a link on a page, for example, the title of the book you want to buy

and its price. The text to sign, which may include the amount and date, is shown.

Check that the header text is *Read* and that the digital signature icon  is shown.

If the digital signature icon does not appear, there is a security breach, and you should not enter any personal data such as your signing PIN.

To sign the text, read all of the text first, and then select **Sign**.

The text may not fit within a single screen. Therefore, make sure to scroll through and read all of the text before signing.

Select the user certificate you want to use. Enter the signing PIN (see "Access codes" on page 10), and select **OK**. The digital signature icon disappears, and the service may display a confirmation of your purchase.



Note: For availability, rates and information on using SIM services, contact your SIM card vendor, for example, network operator, service provider or other vendor.

To set the phone to show you the confirmation messages sent between your phone and the network when you are using the SIM services select **Menu > Settings > Phone > Confirm SIM service actions > Yes**.

Accessing these services may involve sending messages or making a phone call for which you may be charged.

SIM services



Your SIM card may provide additional services. You can access this menu only if it is supported by your SIM card. The name and contents of the menu depend on the available services.

7. PC connectivity

You can send and receive e-mail, and access the Internet when your phone is connected to a compatible PC through an infrared, Bluetooth, or data cable (DKU-2) connection. You can use your phone with a variety of PC connectivity and data communications applications.

■ PC Suite

With Nokia PC Suite you can synchronize contacts, calendar, notes, and to-do notes between your phone and the compatible PC or a remote Internet server (network service). You may find more information and, PC Suite, at the Nokia Web site at www.nokia-asia.com/support.

■ (E)GPRS, HSCSD, and CSD

With your phone you can use the enhanced GPRS (EGPRS), general packet radio service (GPRS), high speed circuit switched data (HSCSD), and circuit switched data (CSD, *GSM data*) data services.

For availability and subscription to data services, contact your

network operator or service provider.

The use of HSCSD services consumes the phone battery faster than normal voice or data calls.

You may need to connect the phone to a charger for the duration of data transfer.

See "(E)GPRS modem settings" on page 65.

■ Data communication applications

For information on using a data communication application, refer to the documentation provided with it.

Making or answering phone calls during a computer connection is not recommended, as it might disrupt the operation.

For better performance during data calls, place the phone on a stationary surface with the keypad facing downward. Do not move the phone by holding it in your hand during a data call.

8. Battery information

■ Charging and Discharging

Your device is powered by a rechargeable battery. The full performance of a new battery is achieved only after two or three complete charge and discharge cycles. The battery can be charged and discharged hundreds of times but it will eventually wear out. When the talk and standby times are noticeably shorter than normal, replace the battery. Use only Nokia approved batteries, and recharge your battery only with Nokia approved chargers designated for this device.

Unplug the charger from the electrical plug and the device when not in use. Do not leave a fully charged battery connected to a charger, since overcharging may shorten its lifetime. If left unused, a fully charged battery will lose its charge over time.

Use the battery only for its intended purpose. Never use any charger or battery that is damaged.

Do not short-circuit the battery. Accidental short-circuiting can occur when a metallic object such

as a coin, clip, or pen causes direct connection of the positive (+) and negative (-) terminals of the battery. (These look like metal strips on the battery.) This might happen, for example, when you carry a spare battery in your pocket or purse. Short-circuiting the terminals may damage the battery or the connecting object.

Leaving the battery in hot or cold places, such as in a closed car in summer or winter conditions, will reduce the capacity and lifetime of the battery and its ability to charge. Always try to keep the battery between 15°C and 25°C (59°F and 77°F). A device with a hot or cold battery may not work temporarily, even when the battery is fully charged. Battery performance is particularly limited in temperatures well below freezing.

Do not dispose of batteries in a fire as they may explode. Batteries may also explode if damaged. Dispose of batteries according to local regulations. Please recycle when possible. Do not dispose as household waste.

■ Nokia Battery Authentication Guidelines (for batteries with Nokia Hologram labels)

Always use original Nokia batteries for your safety. To check that you are getting an original Nokia battery, purchase it from an authorized Nokia dealer, look for the Nokia Original Enhancements logo on the packaging and inspect the hologram label using the following steps:

Successful completion of the four steps is not a total assurance of the authenticity of the battery. If you have any reason to believe that your battery is not an authentic original Nokia battery, you should refrain from using it and take it to the nearest authorized Nokia service point or dealer for assistance. Your authorized Nokia service point or dealer will inspect the battery for authenticity. If authenticity cannot be verified, return the battery to the place of purchase

How do you check the authentication features on the hologram label?

Step 1:



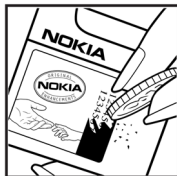
When looking at the hologram label, you should see the Nokia connecting hands symbol from one angle and the Nokia Original Enhancements logo when looking from another angle.

Step 2:



When you angle the hologram to the left, right, down, and up sides of the logo, you should see 1, 2, 3, and 4 dots on each side respectively.

Step 3:



Scratch the side of the label to reveal a 20-digit code, for example

12345678919876543210. Turn the battery so that the numbers are facing upwards. The 20-digit code reads starting from the number at the top row followed by the bottom row.

Step 4:



Confirm that the 20-digit code is valid by verifying it at the Nokia website or through a text message.

- Through the Internet:

Go to www.nokia-asia.com/batterycheck and follow the instructions; or

- Create a text message:

Key in the 20-digit code, for example,

12345678919876543210 and send to

+61 427 151515

National and international operator charges will apply.

You should receive a message indicating whether the code can be authenticated.

What if you battery is not verified as authentic?

If you cannot confirm that your Nokia battery with the hologram label is an authentic Nokia battery, please do not use the battery, but take it to the nearest authorized Nokia service point or dealer for assistance. The use of a battery that is not approved by the manufacturer may be dangerous and may result in poor performance and damage to your device and its enhancements. It may also invalidate any approval or warranty applying to the device.

To find out more about original Nokia batteries visit www.nokiaoriginals.com.

9. Genuine Enhancements

A new extensive range of enhancements is available for your phone. Select the enhancements which accommodate your specific communication needs.



Some of the enhancements are described in detail below.

For availability of the enhancements, please check with your local dealer. A few practical rules for enhancements operation:

- Keep the enhancements out of small children's reach.
- When you disconnect the power cord of any enhancement, grasp and pull the plug, not the cord.
- Check regularly that all mobile phone equipment in a vehicle is mounted and operating properly.

Use only batteries, chargers and enhancements approved by the phone manufacturer. The use of any other types may invalidate any approval or warranty applying to the phone, and may be dangerous.

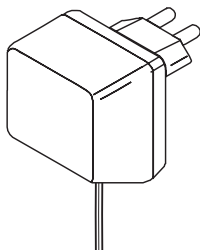
■ Power

Type	Tech	Talk-time*	Standby*
BL-5C	Li-Ion	Up to 3 - 5 hrs	Up to 150 - 300 hrs

* Variation in operation times may occur depending on SIM card, network and usage settings, usage style and environments. Use of FM radio and integrated hands-free will affect talktime and standby.

Standard Charger (ACP-7)

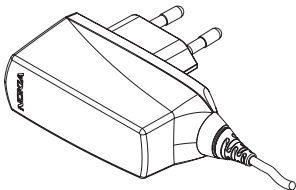
Small, lightweight and durable charger ACP-7 provides an easy and convenient way to charge the phone. It is easy to connect to phone or desktop stand.



Note: The plug types vary according to different markets.

Travel Charger (ACP-12)

Small, lightweight travel charger with multivoltage (100 - 240V) switcher technology. Provides easy and convenient way to charge the phone.

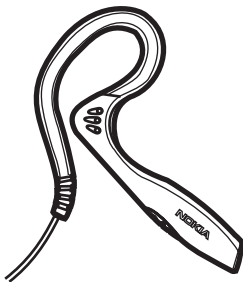


Note: The plug types vary according to different markets.

Audio

Boom Headset (HDB-4)

This small and lightweight headset has a beautiful and distinctive Nokia design. Gives you excellent audio quality and you can answer or end calls by pressing the button on the microphone part of the headset.



Stereo Headset (HDS-3)

This stereo headset has a beautiful and distinctive Nokia design. Gives you excellent audio quality and you can answer or end calls by pressing the remote control button. A comfortable hands-free solution that makes listening to the phone's FM radio, a pleasure.

Vehicle

Mobile Charger (LCH-9)

The multi-voltage Mobile Charger, LCH-9, ensures your phone is always ready for use whenever you travel. This small charger's functional design fits most car lighters and interiors.

A green light indicates that the Mobile Charger is ready for charging. Check the charging status on the phone display. The input voltage can be 12 or 24 V DC, negative grounding.

Avoid prolonged charging with the Mobile Charger when the car engine is not running; this may cause the battery of your car to drain. Note also that in some cars the cigarette lighter plug is not provided with electricity if the ignition is switched off. Verify that the green LED light is on.

10. Care and maintenance

Your device is a product of superior design and craftsmanship and should be treated with care. The suggestions below will help you protect your warranty coverage.

- Keep the device dry. Precipitation, humidity and all types of liquids or moisture can contain minerals that will corrode electronic circuits. If your device does get wet, remove the battery and allow the device to dry completely before replacing it.
- Do not use or store the device in dusty, dirty areas. Its moving parts and electronic components can be damaged.
- Do not store the device in hot areas. High temperatures can shorten the life of electronic devices, damage batteries, and warp or melt certain plastics.
- Do not store the device in cold areas. When the device returns to its normal temperature, moisture can form inside the device and damage electronic circuit boards.
- Do not attempt to open the device other than as instructed in this guide.
- Do not drop, knock, or shake the device. Rough handling can break internal circuit boards and fine mechanics.
- Do not use harsh chemicals, cleaning solvents, or strong detergents to clean the device.
- Do not paint the device. Paint can clog the moving parts and prevent proper operation.
- Use a soft, clean, dry cloth to clean any lenses (such as camera, proximity sensor, and light sensor lenses).
- Use only the supplied or an approved replacement antenna. Unauthorized antennas, modifications, or attachments could damage the device and may violate regulations governing radio devices.
- Use chargers indoors.
- Always create a backup of data you want to keep (such as contacts and calendar notes) before sending your device to a service facility.

All of the above suggestions apply equally to your device, battery, charger, or any enhancement. If any device is not working properly, take it to the nearest authorized service facility for service.

11. Additional safety information

Your device and its enhancements may contain small parts. Keep them out of the reach of small children.

■ Operating environment

Remember to follow any special regulations in force in any area and always switch off your device when its use is prohibited or when it may cause interference or danger. Use the device only in its normal operating positions. This device meets RF exposure guidelines when used either in the normal use position against the ear or when positioned at least 1.5 cm away from the body. When a carry case, belt clip or holder is used for body-worn operation, it should not contain metal and should position the device the above-stated distance from your body. In order to transmit data files or messages, this device requires a good quality connection to the network. In some cases, transmission of data files or messages may be delayed until such a connection is available. Ensure the above separation distance instructions are followed until the transmission is completed.

■ Medical devices

Operation of any radio transmitting equipment, including wireless phones, may interfere with the functionality of inadequately protected medical devices. Consult a physician or the

manufacturer of the medical device to determine if they are adequately shielded from external RF energy or if you have any questions. Switch off your device in health care facilities when any regulations posted in these areas instruct you to do so. Hospitals or health care facilities may be using equipment that could be sensitive to external RF energy.

Pacemakers

Pacemaker manufacturers recommend that a minimum separation of 6 in. (15.3 cm) be maintained between a wireless phone and a pacemaker to avoid potential interference with the pacemaker. These recommendations are consistent with the independent research by and recommendations of Wireless Technology Research. Persons with pacemakers should:

- always keep the device more than 6 in. (15.3 cm) from their pacemaker when the device is switched on;
- not carry the device in a breast pocket; and
- hold the device to the ear opposite the pacemaker to minimise the potential for interference.

If you have any reason to suspect that interference is taking place, switch off your device immediately.

Hearing aids

Some digital wireless devices may interfere with some hearing aids. If interference occurs, consult your service provider.

■ Vehicles

RF signals may affect improperly installed or inadequately shielded electronic systems in motor vehicles such as electronic fuel injection systems, electronic antiskid (antilock) braking systems, electronic speed control systems, air bag systems. For more information, check with the manufacturer or its representative of your vehicle or any equipment that has been added.

Only qualified personnel should service the device, or install the device in a vehicle. Faulty installation or service may be dangerous and may invalidate any warranty that may apply to the device. Check regularly that all wireless device equipment in your vehicle is mounted and operating properly. Do not store or carry flammable liquids, gases, or explosive materials in the same compartment as the device, its parts, or enhancements. For vehicles equipped with an air bag, remember that air bags inflate with great force. Do not place objects, including installed or portable wireless equipment in the area over the air bag or in the air bag deployment area. If in-vehicle wireless equipment is improperly installed and the air bag inflates, serious injury could result.

■ Airplanes

Using your device while flying in aircraft may be prohibited. Switch off your device before boarding an aircraft. The use of wireless teledevices in an aircraft may be dangerous to the operation of the aircraft, disrupt the wireless telephone network, and may be illegal.

■ Potentially explosive environments

Switch off your device when in any area with a potentially explosive atmosphere and obey all signs and instructions. Potentially explosive atmospheres include areas where you would normally be advised to turn off your vehicle engine. Sparks in such areas could cause an explosion or fire resulting in bodily injury or even death. Switch off the device at refuelling points such as near gas pumps at service stations. Observe restrictions on the use of radio equipment in fuel depots, storage, and distribution areas, chemical plants or where blasting operations are in progress. Areas with a potentially explosive atmosphere are often but not always clearly marked. They include below deck on boats, chemical transfer or storage facilities, vehicles using liquefied petroleum gas (such as propane or butane), and areas where the air contains chemicals or particles such as grain, dust or metal powders.

■ Emergency calls



Important: Wireless phones, including this device, operate using radio signals, wireless networks, landline networks, and user-programmed functions. Because of this, connections in all conditions cannot be guaranteed. You should never rely solely on any wireless device for essential communications like medical emergencies.

accurately as possible. Your wireless device may be the only means of communication at the scene of an accident. Do not end the call until given permission to do so.

To make an emergency call:

1. If the device is not on, switch it on. Check for adequate signal strength. Some networks may require that a valid SIM card is properly inserted in the device.
2. Press the end key as many times as needed to clear the display and ready the device for calls.
3. Key in the official emergency number for your present location. Emergency numbers vary by location.
4. Press the call key.

If certain features are in use, you may first need to turn those features off before you can make an emergency call. If the device is in offline or flight mode you must change the profile to activate the phone function before you can make an emergency call. Consult this guide or your service provider for more information.

When making an emergency call, give all the necessary information as

■ Certification information (SAR)

THIS MODEL PHONE MEETS INTERNATIONAL GUIDELINES FOR EXPOSURE TO RADIO WAVES.

Your mobile phone is a radio transmitter and receiver. It is designed and manufactured not to exceed the limits for exposure to radio frequency (RF) recommended by international guidelines (ICNIRP). These limits are part of comprehensive guidelines and establish permitted levels of RF energy for the general population. The guidelines were developed by independent scientific organisations through periodic and thorough evaluation of scientific studies. The guidelines include a substantial safety margin designed to assure the safety of all persons, regardless of age and health.

The exposure standard for mobile phones employs a unit of measurement known as the Specific Absorption Rate, or SAR. The SAR limit stated in the international guidelines is 2.0 W/kg*. Tests for SAR are conducted using standard operating positions with the phone transmitting at its highest certified power level in all tested frequency bands. Although the SAR is determined at the highest certified power level, the actual SAR of the phone while operating can be well below the maximum value. This is because the phone is designed to operate at multiple power levels so as to use only the power required to reach

the network. In general, the closer you are to a base station, the lower the power output of the phone.

The highest SAR value for this model phone when tested for use at the ear is 0.70 W/kg. While there may be differences between the SAR levels of various phones and at various positions, they all meet the relevant international guidelines for RF exposure.

This product meets RF exposure guidelines when used either in the normal use position against the ear or when positioned at least 1.5 cm away from the body. When a carry case, belt clip or holder is used for body-worn operation, it should not contain metal and should position the product at least 1.5 cm away from your body.

* The SAR limit for mobile phones used by the public is 2.0 watts/kilogram (W/kg) averaged over ten grams of body tissue. The guidelines incorporate a substantial margin of safety to give additional protection for the public and to account for any variations in measurements. SAR values may vary depending on national reporting requirements and the network band. For SAR information in other regions please look under product information at www.nokia-asia.com.

Index

SYMBOLS

(E)GPRS connection 65
(E)GPRS modem settings 65

A

Access codes 10
activate the IR port 64
Appearance settings 97
assign a number to a speed-dialing key 56

B

Barring password 11
Basic radio functions 75
Battery 107
Battery Authentication 105
Battery information
 type 107
Block and unblock messages 43
Bluetooth settings 63
Bookmarks 98
Boom Headset (HDB-4) 108
Browser security 100
 browser security
 security module for WAP applications 100

C

Cache memory 100
Calculator 93
Calendar 84
Call register 58
Call waiting 23
Callback requests 80
Camera 72
Care and maintenance 109
Certification information (SAR) 113
Change mode 72
Change the covers 16
change the font size 50
conference call 23
Configuration settings service 11
Contacts 50

Copy contacts 52
Countdown timer 93
Create a wallet profile 87
Create and set up groups 81

D

deactivate the IR connection 64
Digital signature 101
digital signature 101
Download e-mail 45

E

Edit contact 52
E-mail 44
E-mail settings 49

G

Gallery 70
Game downloads 91
Game settings 91
Games 91
Genuine Enhancements 107

I

Indicators 19
Infrared (IR) port 18
Install a multimedia card 14
Install the SIM card and the battery 13
Instant messages 37

K

Keypad lock 20

L

loudspeaker 23

M

make a note 84
Make a one-to-one call 79
Make and receive a push to talk call 79
manage the files and folders 70

- Media 71
- Media equaliser 74
- Media player 72
- menu
 - list of functions 29
- menu functions 29
- Missed calls 59
- Mobile Charger (LCH-9) 108
- mobile Internet 94
- Multimedia message settings 48
- Multimedia messages 34
- Multimedia messages memory full 37
- Multimedia messaging supports 34
- Music player 73

O

- Operator menu 70
- Organizer 84

P

- Paired devices 63
- Participate in an instant messaging conversation 42
- PC connectivity 103
- personalizing your phone 60
- picture templates 33
- PIN codes 10
- Positioning information 59
- Power key 17
- Predictive text input 25
- presence service 52
- preset code 10
- profile
 - activate 60
 - personalize 60
 - Timed 60
- PUK codes 11
- Push to talk 77
- Push to talk settings 78, 83

R

- Radio 75
- Receive a group or a one-to-one call 80
- Record a video clip 72
- Restore factory settings 69

S

- safety information 110
- SAR value 113
- Save multiple numbers, text items, or an image 51
- Save names and phone numbers 51
- Screen saver 61
- Scripts over secure connection 98
- Secure server connection 45
- Security 69
- Security code 10
- security settings
 - digital signature 101
- send a business card 56
- Send as e-mail 32
- Send to many 32
- Shared Memory 9
- SIM services 102
- Speed dialing 22
- Start an instant messaging conversation 40
- Stereo Headset (HDS-3) 108
- Stopwatch 94
- Synchronization 89
 - Synchronization settings 90
- Synchronize from a compatible PC 90

T

- text templates 33
- Themes 60
- To-do list 85
- Traditional text input 26
- Tune a radio channel 75

U

- USB data cable 65
- using a voice tag 57

V

- Voice dialing 57
- Voice messages 47
- Volume keys 17

W

- wallet

I n d e x

- Guidelines for making purchases
 - with the wallet 88
 - signing documents via WAP 101
- Wallet code 11
- WAP services
 - security module in SIM 100
 - signing documents 101
- While browsing 97
- Write and send a multimedia message 34
- Write and send SMS messages 32
- Write text 25
- writing and sending notes 85