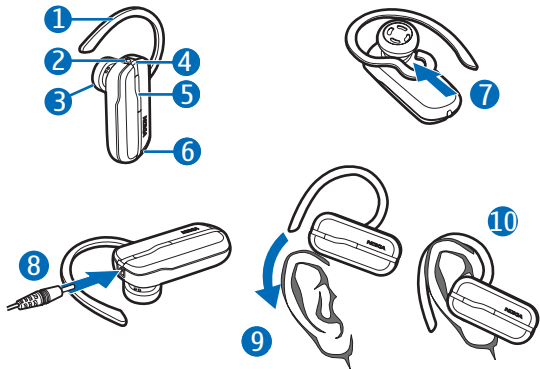


# Nokia Bluetooth Headset BH-102

---



## DECLARATION OF CONFORMITY

Hereby, NOKIA CORPORATION declares that this HS-107W product is in compliance with the essential requirements and other relevant provisions of Directive 1999/5/EC. A copy of the Declaration of Conformity can be found at [http://www.nokia.com/phones/declaration\\_of\\_conformity/](http://www.nokia.com/phones/declaration_of_conformity/).

**CE 0889**

© 2008 Nokia. All rights reserved.

Nokia and Nokia Connecting People are registered trademarks of Nokia Corporation. Other product and company names mentioned herein may be trademarks or tradenames of their respective owners.

Reproduction, transfer, distribution, or storage of part or all of the contents in this document in any form without the prior written permission of Nokia is prohibited.

Bluetooth is a registered trademark of Bluetooth SIG, Inc.

Nokia operates a policy of ongoing development. Nokia reserves the right to make changes and improvements to any of the products described in this document without prior notice.

To the maximum extent permitted by applicable law, under no circumstances shall Nokia or any of its licensors be responsible for any loss of data or income or any special, incidental, consequential or indirect damages howsoever caused.

The contents of this document are provided "as is". Except as required by applicable law, no warranties of any kind, either express or implied, including, but not limited to, the implied warranties of merchantability and fitness for a particular purpose, are made in relation to the accuracy, reliability or contents of this document. Nokia reserves the right to revise this document or withdraw it at any time without prior notice.

The availability of particular products may vary by region. Please check with your Nokia dealer for details.

Export controls

This device may contain commodities, technology or software subject to export

laws and regulations from the US and other countries. Diversion contrary to law is prohibited.

## Introduction

---

With the Nokia Bluetooth Headset BH-102, you can make and receive calls while on the move. You can use the headset with compatible phones that support Bluetooth wireless technology.

Read this user guide carefully before using the headset. Also, read the user guide for your phone. It provides important safety and maintenance information. Keep the headset out of the reach of small children.

### Bluetooth wireless technology

Bluetooth wireless technology allows you to connect compatible

devices without cables. The phone and the headset do not need to be in line of sight, but they should be within 10 metres (33 feet) of each other. Connections may be subject to interference from obstructions, such as walls, or other electronic devices.

The headset complies with the Bluetooth Specification 2.0 + EDR that supports the Headset Profile 1.1 and Hands-Free Profile 1.5. Check with the manufacturers of other devices to determine their compatibility with this device.

# Get started

---

The headset contains the following parts shown on the title page: earloop (1), charger connector (2), earpiece (3), blue indicator light (4), multifunction key (5), and microphone (6).

Before using the headset, you must charge the battery and pair the headset with a compatible phone.

Parts of the device are magnetic. Metallic materials may be attracted to the device. Do not place credit cards or other magnetic storage media near the device, because information stored on them may be erased.

## Chargers

This device is intended for use when supplied with power from the

following chargers: AC-3, AC-4, AC-5, and DC-4.



**Warning:** Use only chargers approved by Nokia for use with this

particular enhancement. The use of any other types may invalidate any approval or warranty, and may be dangerous.

When you disconnect the power cord of any enhancement, grasp and pull the plug, not the cord.

## Charge the battery

Before charging the battery, carefully read "[Battery information](#)".

1. Connect the charger to a wall outlet.
2. Connect the charger cable to the charger connector (8). The indicator light is on during

charging. Charging the battery fully may take up to 2 hours.

3. When the battery is fully charged, the indicator light turns off. Disconnect the charger from the headset and the wall outlet.

The fully charged battery has power for up to 10 hours of talk time or up to 250 hours of standby time.

When battery power is low, the headset beeps once every minute and the indicator light flashes quickly.

## Switch on or off

To switch on, press and hold the multifunction key for about 2 to 4 seconds. The headset beeps, and the indicator light is displayed. The headset tries to connect to a paired device.

To switch off, press and hold the multifunction key for about 4 to 8 seconds.

## Pair the headset

1. Ensure that your phone is switched on and the headset is switched off.
2. Press and hold the multifunction key (for about 4 to 8 seconds) until the indicator light starts to flash quickly.
3. Activate the Bluetooth feature on the phone, and set the phone to search for Bluetooth devices.
4. Select the headset from the list of found devices.
5. Enter the passcode 0000 to pair and connect the headset to your phone. In some phones, you may need to make the

connection separately after pairing. You only need to pair the headset with your phone once.

If the pairing is successful, the headset appears in the phone

menu where you can view the currently paired Bluetooth devices.

When the headset is connected to your phone and is ready for use, the indicator light flashes slowly.

## Basic use

---

### Put on the headset

To use the headset on your right ear, attach the earloop as shown in Figure 7; to use the headset on your left ear, attach the earloop from the other side. Slide the earloop over your ear (9), and gently push the earpiece into your ear. Point the headset towards your mouth (10).

### Call handling

To make a call, use your phone in the normal way when the headset is connected to your phone.

To redial the number you last called (if your phone supports this feature with the headset), when no call is in progress, press the multifunction key twice.

To activate voice dialling (if your phone supports this feature with the headset), when no call is in progress, press and hold the

multifunction key for about 2 to 4 seconds. Proceed as described in the phone user guide.

To answer or end a call, press the multifunction key. To reject a call, press this key twice.

To adjust the volume during a call, use the phone volume keys.

To switch a call between the headset and a compatible phone, press and hold the multifunction key for about 2 to 4 seconds.

### Clear settings or reset

To delete the pairings from the headset, switch off the headset,

and press and hold the multifunction key for over 8 seconds until the headset beeps twice and the indicator light flashes quickly.

To reset the headset if it stops functioning, even though it is charged, plug the headset into a charger.

### Troubleshooting

If you cannot connect the headset to your compatible phone, check that the headset is charged, switched on, and paired with your phone.

## Battery information

---

This device has an internal, nonremovable, rechargeable battery. Do not attempt to remove the battery from the device as you may damage the device. The battery can be

charged and discharged hundreds of times, but it will eventually wear out. Recharge your battery only with Nokia approved chargers designated for this device. Use of an unapproved

charger may present a risk of fire, explosion, leakage, or other hazard.

If a battery is being used for the first time or if the battery has not been used for a prolonged period, it may be necessary to connect the charger, then disconnect and reconnect it to begin charging the battery. If the battery is completely discharged, it may take several minutes before the charging indicator light is displayed.

Unplug the charger from the electrical plug and the device when not in use. Do not leave a fully charged battery connected to a charger, since overcharging may shorten its lifetime. If left unused, a fully charged battery will lose its charge over time.

Always try to keep the battery between 15°C and 25°C (59°F and 77°F). Extreme temperatures reduce the capacity and lifetime of the battery. A device with a hot or cold battery may not work temporarily.

Battery performance is particularly limited in temperatures well below freezing.

Do not dispose of batteries in a fire as they may explode. Batteries may also explode if damaged.

Never use any charger that is damaged.



**Important:** Battery talk and standby times are estimates only and depend on network conditions, features used, battery age and condition, temperatures to which battery is exposed, and many other factors. The amount of time a device is used for calls will affect its standby time. Likewise, the amount of time that the device is turned on and in the standby mode will affect its talk time.

## Care and maintenance

---

Your device is a product of superior design and craftsmanship and should be treated with care. The following suggestions will help you protect your warranty coverage.

- Keep the device dry. Precipitation, humidity, and all types of liquids or moisture can contain minerals that will corrode electronic circuits. If your device does get wet, allow it to dry completely.
- Do not use or store the device in dusty, dirty areas. Its moving parts and electronic components can be damaged.
- Do not store the device in hot areas. High temperatures can shorten the life of electronic devices, damage batteries, and warp or melt certain plastics.
- Do not store the device in cold areas. When the device returns to

its normal temperature, moisture can form inside the device and damage electronic circuit boards.

- Do not attempt to open the device.
- Do not drop, knock, or shake the device. Rough handling can break internal circuit boards and fine mechanics.
- Do not use harsh chemicals, cleaning solvents, or strong detergents to clean the device.
- Do not paint the device. Paint can clog the moving parts and prevent proper operation.

If the device is not working properly, take it to the nearest authorised service facility for service.