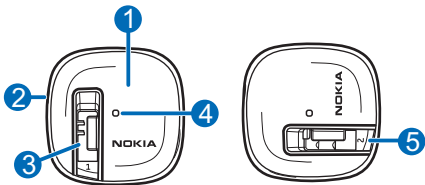
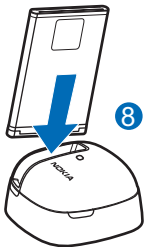
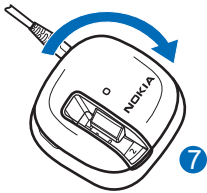
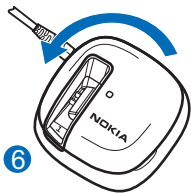


Nokia Battery Charging Stand DT-33







© 2010 Nokia. All rights reserved.

Introduction

With the Nokia Battery Charging Stand DT-33, you can charge a spare battery for your Nokia mobile device.

The stand contains the following parts shown on the title page: rotatable cover (1), 2.0 mm charger connector

Nokia, Nokia Connecting People and the Nokia Original Accessories logo are trademarks or registered trademarks of Nokia Corporation.

(2), charging slot 1 (3), indicator light (4), and charging slot 2 (5).

The surface of this device is nickel-free.

Use only Nokia original batteries and chargers.

Basic use

Compatible chargers

This device is intended for use when supplied with power from the following Nokia original chargers: AC-3, AC-4, AC-5, AC-8, and AC-15. The exact charger model number may vary depending on the type of plug.

The plug variant is identified by one of the following: E, X, AR, U, A, C, K, or B.

Select the correct slot for your battery

The stand has two charging slots (numbered 1 and 2) for different

Nokia original rechargeable battery models. The number is printed at the bottom of each slot.

To select slot 2 if slot 1 is visible, rotate the cover to the left (6). To select slot 1 if slot 2 is visible, rotate the cover to the right (7).

Slot 1 is intended for use with the following batteries: BL-4B, BL-4CT, BL-4D, BL-4J, BL-4S, BL-4U, BL-5BT, BL-5CT, BL-5F, BL-5J, BL-5K, BL-6F, BL-6P, BL-6Q, BP-4L, BP-5M, and BP-6MT.

Slot 2 is intended for use with the following batteries: BL-4C, BL-5B, BL-5C, BL-5CA, BL-5CB, and BL-6C.

Charge the battery

1. Place the stand on a stable, flat surface. Connect the charger to the stand and to a wall outlet.
The indicator light flashes once.

2. Place the battery into the stand from the top (8) so that the battery and stand connectors are aligned.

The indicator light is displayed during charging.

3. When the battery is fully charged, the indicator light turns off.

Remove the battery from the slot from the top, and disconnect the charger from the stand, then from the wall outlet.

When you unplug a charger, grasp and pull the plug, not the cord.

Troubleshooting

If the battery that you placed into the stand is fully charged, the indicator light flashes twice, and charging does not start.

If the battery is damaged or the battery temperature is too low or too high, the indicator light flashes quickly, and charging does not start.

If the charger that you connected to the stand is incompatible with the stand, the indicator light flashes

quickly or is not displayed at all, and charging does not start.

Take care of your device

Handle your device with care. The following suggestions help you protect your warranty coverage.

- Keep the device dry. Precipitation, humidity, and all types of liquids or moisture can contain minerals that corrode electronic circuits. If your device gets wet, allow it to dry completely.
- Do not use or store the device in dusty or dirty areas. Moving parts and electronic components can be damaged.
- Do not store the device in high temperatures. High temperatures can shorten the life of the device and warp or melt plastics.

- Do not store the device in cold temperatures. When the device warms to its normal temperature, moisture can form inside the device and damage electronic circuits.
- Do not attempt to open the device.
- Do not drop, knock, or shake the device. Rough handling can break internal circuit boards and mechanics.
- Only use a soft, clean, dry cloth to clean the surface of the device.
- Do not paint the device. Paint can clog the moving parts and prevent proper operation.

Recycle

Always return your used electronic products, batteries, and packaging

materials to dedicated collection points. This way you help prevent uncontrolled waste disposal and promote the recycling of materials. Check product environmental information and how to recycle your Nokia products at www.nokia.com/werecycle, or with a mobile device, www.nokia.mobi/werecycle.



The crossed-out wheeled-bin symbol on your product, battery, literature, or packaging reminds you that all electrical and electronic products, batteries, and accumulators must be taken to separate collection at the end of their working life. This requirement applies in the European Union. Do not dispose of these products as unsorted municipal waste. For more information on the environmental attributes of your device, see www.nokia.com/ecodeclaration.