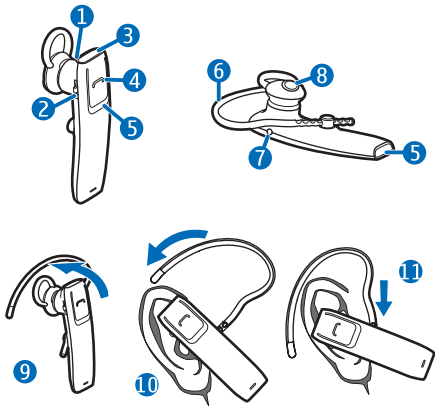
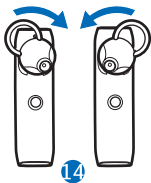
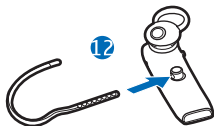


Nokia Bluetooth Headset BH-609





DECLARATION OF CONFORMITY

Hereby, NOKIA CORPORATION declares that this BH-609 product is in compliance with the essential requirements and other relevant provisions of Directive 1999/5/EC. A copy of the Declaration of Conformity can be found at http://www.nokia.com/phones/declaration_of_conformity/.

CE 0560

© 2010–2011 Nokia. All rights reserved.

Nokia, Nokia Connecting People and the Nokia Original Accessories logo are trademarks or registered trademarks of Nokia Corporation. Nokia tune is a sound mark of Nokia Corporation. Other product and company names mentioned herein may be trademarks or tradenames of their respective owners.

Reproduction, transfer, distribution, or storage of part or all of the contents in this document in any form without the prior written permission of Nokia is prohibited. Nokia operates a policy of continuous development. Nokia reserves the right to make changes and improvements to any of

the products described in this document without prior notice.

Bluetooth is a registered trademark of Bluetooth SIG, Inc.

To the maximum extent permitted by applicable law, under no circumstances shall Nokia or any of its licensors be responsible for any loss of data or income or any special, incidental, consequential or indirect damages howsoever caused.

The contents of this document are provided "as is". Except as required by applicable law, no warranties of any kind, either express or implied, including, but not limited to, the implied warranties of merchantability and fitness for a particular purpose, are made in relation to the accuracy, reliability or contents of this document. Nokia reserves the right to revise this document or withdraw it at any time without prior notice.

The availability of products may vary by region. For more information, contact your Nokia dealer. This device may contain commodities, technology or software subject to export laws and regulations from the US and other countries. Diversion contrary to law is prohibited.

Introduction

With the Nokia Bluetooth Headset BH-609, you can make and answer calls hands-free with your compatible mobile device. The headset is provided with wind noise reduction and noise cancellation that helps you handle calls in noisy environments.

Read this user guide carefully before using the headset. Also, read the user guide for the device that you connect to the headset.

This product may contain small parts. Keep them out of the reach of small children.

The surface of this device is nickel-free.

My own key

The headset has a shortcut key that you can set to perform different functions on a compatible Nokia

device. To define the functions, use the Nokia Accessory Setup Application.

With the application, you can also view headset information and define headset settings when the headset is connected to your device. For details, see the help of the application.

If the application is not already installed in your mobile device, check the availability of the application for your device from the support pages of this headset at www.nokia.com/support.

If the application is not available for your Nokia device, you can use the shortcut key to mute the microphone during a call.

Bluetooth wireless technology

Bluetooth wireless technology allows you to connect compatible devices without cables. The headset and the other device do not need to be in line of sight, but they should be within 10 metres (33 feet) of each other. Connections may be subject to

interference from obstructions, such as walls, or other electronic devices.

The headset is compliant with the Bluetooth Specification 2.1 + EDR supporting the Headset Profile 1.1 and Hands-Free Profile 1.5. Check with the manufacturers of other devices to determine their compatibility with this device.

Get started

The headset contains the following parts shown on the title page: indicator light (1), volume key (2), My own key (3), multifunction key (4), microphones (5), earloop (6), charger connector (7), and earpiece (8).

Before using the headset, you must charge the battery and pair the headset with a compatible device.

Parts of the device are magnetic. Metallic materials may be attracted to the device.

Do not place credit cards or other magnetic storage media near the device, because information stored on them may be erased.

Charge the battery

Before charging the battery, carefully read "Battery and charger information".

1. Connect the charger to a wall outlet.

2. Connect the charger cable to the charger connector. The red indicator light is displayed during charging.

Charging the battery fully may take up to 1 hour. Charging the battery with the AC-15 charger for 15 minutes provides up to 2 hours of talk time.

3. When the battery is fully charged, the green indicator light is displayed.

Disconnect the charger from the headset, then from the wall outlet. This saves energy, as chargers consume a small amount of power when connected to a wall outlet, even when not charging.

The fully charged battery has power for up to 6 hours of talk time or up to 180 hours of standby time.

To check the battery charge when the headset is not connected to a charger,

press the multifunction key when the headset is connected to a mobile device. If the indicator light is green, the charge level is sufficient. If the light is yellow, you may need to recharge the battery soon. If the light is red, recharge the battery.

When the battery charge is low, the headset beeps every 5 minutes and the red indicator light flashes.

Switch on or off

To switch on, press and hold the multifunction key for about 2 seconds. The headset beeps, and the green indicator light flashes slowly while the headset tries to connect to the last or two last connected devices. When the headset is connected to at least one device and is ready for use, the blue indicator light flashes slowly. If the headset has not been paired with a device, it automatically enters pairing mode.

To switch off, press and hold the multifunction key for about 5 seconds. The headset beeps, and the red indicator light is briefly displayed. If the headset is not connected to a device within about 30 minutes, it switches off automatically.

Pair and connect the headset

Before using the headset, you must pair and connect it to a compatible device.

You can pair the headset with up to eight devices, but you can connect it to a maximum of two devices at a time.

1. Make sure your mobile device is switched on and the headset is off.
2. If the headset has not been previously paired with a device, switch on the headset. The headset enters pairing mode, and the blue

indicator light starts to flash quickly.

If the headset has been previously paired with a device, make sure the headset is switched off, and press and hold the multifunction key for about 5 seconds until the blue indicator light starts to flash quickly.

3. Within about 3 minutes, activate the Bluetooth feature on your device, and set it to search for Bluetooth devices. For details, see the user guide of your mobile device.
4. Select the headset from the list of found devices.
5. If necessary, enter the passcode 0000 to pair and connect the headset to your device.

In some devices, you may need to make the connection separately after pairing.

When the headset is connected to at least one device and is ready for use, the blue indicator light flashes slowly.

To manually connect the headset to the last or two last used devices, press and hold the multifunction key for about 2 seconds (when no devices are connected), or make the connection in the Bluetooth menu of the desired

device. If you have a device connected to the headset and want to connect a second device, make the connection in the Bluetooth menu of the device.

You may be able to set your device so that the headset connects to it automatically. To activate this feature in a Nokia device, modify the paired device settings in the Bluetooth menu.

Basic use

Change the earpad

The headset is provided with different sized earpads. Select the earpad that fits the best and is the most comfortable for your ear.

To change the earpad, pull the current earpad from the earpiece, and push the new earpad into place (13).

Place the headset on the ear

To place the headset on the ear, gently push the earpiece against your ear.

Point the headset towards your mouth (11). You can rotate the earpad to keep the headset securely in the ear (14).

For example, if you use the headset on the right ear, you may need to rotate the earpad to the right for the best fit. If you wear an earring, make sure it is

not accidentally attached to the earpad.

To use the headset with the earloop, attach the earloop (12). To detach the earloop, gently pull it from the headset.

To place the headset on the ear when you use the earloop, push the earloop with your finger (9), and slide the earloop behind your ear (10). Gently push the earpiece against your ear. Point the headset towards your mouth (11). Push or pull the earloop to set its length.

Change the volume

Slide the volume key up or down. To change the volume quickly, slide and hold the key.

The selected volume level is saved for the device that is currently connected to the headset.

Calls

To make a call, use your mobile device in the normal way when the headset is connected to it.

To redial the number you last called (if your mobile device supports this feature with the headset), when no call is in progress, press the multifunction key twice.

To activate voice dialling (if your mobile device supports this feature with the headset), when no call is in progress, press and hold the multifunction key for about 2 seconds. Proceed as described in the user guide of the mobile device.

To answer or end a call, press the multifunction key. To reject a call, press this key twice.

To mute or unmute the microphone during a call, press the middle of the volume key. The headset beeps, and a

related icon is displayed on your device (if supported by the device).

To switch a call between the headset and a compatible connected device, press and hold the multifunction key for about 2 seconds.

Manage two calls

To manage two calls with the headset at the same time, your mobile device must support the Bluetooth Hands-Free Profile 1.5, and call waiting must be activated in the device. Call waiting is a network service and is available when the headset is connected to only one device.

To answer a waiting call and end the active call, press the multifunction key.

To answer a waiting call and put the active call on hold, press and hold the multifunction key for about 2 seconds.

To end the active call and make the call on hold active, press the multifunction key.

To switch between the active call and the call on hold, press and hold the multifunction key for about 2 seconds.

Connect to two devices

You can connect the headset to two devices at the same time.

By default, the headset can only be connected to one device at a time. To allow the headset to connect to two devices, switch off the headset, and press and hold the multifunction key, and slide and hold the volume key up for about 5 seconds. The green indicator light flashes once.

To allow the headset to connect to only one device, switch off the headset, and press and hold the multifunction key, and slide and hold the volume key down for about 5

seconds. The yellow indicator light flashes once.

Pair and connect to two devices

To pair the headset with two devices, switch on the headset, put it into pairing mode, and pair it with the first device. Switch off the headset, put it into pairing mode, and pair it with the second device.

To connect the headset to the two devices, switch the headset off and back on.

Handle calls

If the headset can connect to two devices at the same time and you use redialling or voice dialling, the call is made on the device that you last used to make a call when the headset was connected to it.

To answer a call on one connected device and end the active call on the

other device, press the multifunction key.

To answer a call on one connected device and put the active call on hold on the other device, press and hold the multifunction key for about 2 seconds.

To end the active call on one connected device and make the call on hold active on the other device, press the multifunction key.

To switch between the active call on one device and the call on hold on the other device, press and hold the multifunction key for about 2 seconds.

Turn lights on or off

By default, the indicator lights are shown in all situations. To turn the lights off in some situations (for example, during a call or when the headset is connected to a mobile device), press and hold the multifunction key, and slide and hold

the volume key down for about 5 seconds when the headset is connected to a device. The yellow indicator light flashes once.

To turn the lights back on, press and hold the multifunction key, and slide and hold the volume key up for about 5 seconds. The green indicator light flashes once.

Clear settings or reset

To clear all the settings from the headset (including settings you have defined with the Nokia Accessory Setup Application), switch off the headset, and press and hold the

multifunction key for about 8 seconds. The headset beeps twice, and the red and green indicator lights alternate. After the settings are cleared, the headset enters pairing mode.

To reset the headset if it stops functioning, even though it is charged, connect the headset to a charger while you press and hold the multifunction key.

Troubleshooting

If you cannot connect the headset to your compatible device, make sure the headset is charged, switched on, and paired with the device.

Battery and charger information

This device has an internal, nonremovable, rechargeable battery. Do not attempt to remove the battery from the device as you may damage the device. This device is intended for use

when supplied with power from the following chargers: AC-3, AC-4, AC-5, AC-8, AC-15, and DC-4. The exact charger model number may vary depending on the type of plug. The plug

variant is identified by one of the following: E, X, AR, U, A, C, K, or B. The battery can be charged and discharged hundreds of times, but it will eventually wear out.

Talk and standby times are estimates only. Actual times are affected by, for example, device settings, features being used, battery condition, and temperature.

If the battery has not been used for a long time, to begin charging, you may need to connect the charger, then disconnect and reconnect it.

If the battery is completely discharged, it may take several minutes before the charging indicator is displayed.

When your charger is not in use, unplug it from the electrical plug and the device. Do not leave a fully charged battery connected to a charger, as overcharging may shorten the battery's lifetime. If left unused, a fully charged battery will lose its charge over time.

Always keep the battery between 15°C and 25°C (59°F and 77°F). Extreme temperatures reduce the capacity and lifetime of the battery. A device with a hot or cold battery may not work temporarily.

Do not dispose of batteries in a fire as they may explode. Dispose of batteries according to local regulations. Recycle when possible. Do not dispose as household waste.

Use the charger for its intended purpose only. Improper use or use of unapproved chargers may present a risk of fire, explosion, or other hazard, and may invalidate any approval or warranty. If you believe the charger is damaged, take it to a service centre for inspection before continuing to use it. Never use a damaged charger. Only use the charger indoors.

Take care of your device

Handle your device, charger and accessories with care. The following suggestions help you protect your warranty coverage.

- Keep the device dry. Precipitation, humidity, and all types of liquids or moisture can contain minerals that corrode electronic circuits. If your device gets wet, allow it to dry completely.
- Do not use or store the device in dusty or dirty areas. Moving parts and electronic components can be damaged.
- Do not store the device in high temperatures. High temperatures can shorten the life of the device, damage the battery, and warp or melt plastics.
- Do not store the device in cold temperatures. When the device warms to its normal temperature,

moisture can form inside the device and damage electronic circuits.

- Do not attempt to open the device.
- Do not drop, knock, or shake the device. Rough handling can break internal circuit boards and mechanics.
- Only use a soft, clean, dry cloth to clean the surface of the device.
- Do not paint the device. Paint can clog the moving parts and prevent proper operation.

Recycle

Always return your used electronic products, batteries, and packaging materials to dedicated collection points. This way you help prevent uncontrolled waste disposal and promote the recycling of materials. Check product environmental information and how to recycle your Nokia products at www.nokia.com/werecycle, or with a

mobile device, www.nokia.mobi/werecycle.



The crossed-out wheeled-bin symbol on your product, battery, literature, or packaging reminds you that all electrical and electronic products, batteries, and accumulators must be taken to separate collection at the end of their working life. This requirement applies in the European Union. Do not dispose of these products as unsorted municipal waste. For more information on the environmental attributes of your device, see www.nokia.com/ecodeclaration.