

Nokia C7-00 User Guide

Contents**Safety****5****Get started****7**

Keys and parts	7
Insert the SIM card and battery	9
Insert a memory card	11
Charging	12
Switch the phone on or off	13
Use your phone for the first time	14
Copy contacts or photos from your old phone	14
Lock or unlock the keys and screen	15
Antenna locations	16
Change the volume of a call, song, or video	16
Attach the wrist strap	16
Headset	17
Use the user guide in your phone	17

Install Nokia Suite on your computer**18****Basic use****18**

Use the toolbar	18
Touch screen actions	19
Use shortcuts	21
Switch between open applications	22
Write text	22
Display indicators	26
Set your phone to blink for missed calls or messages	27
Flashlight	28
Search your phone and the internet	28
Use your phone offline	28
Prolong battery life	29
Restore original settings	30

Personalisation**30**

Profiles	30
----------	----

Change your theme	32
Home screen	32
Organise your apps	35
Download a game, app, or other item	35

Telephone**36**

Call a phone number	36
Switch the loudspeaker on during a call	36
Search for a contact from the dialler	36
Turn to silence your phone	37
Call a contact	38
Answer a waiting call	38
Make a video call	39
Answer a video call	40
Decline a video call	40
Make a conference call	40
Call the numbers you use the most	41
Use your voice to call a contact	42
Make calls over the internet	42
Call the last dialled number	43
Record a phone conversation	43
View your missed calls	44
Call your voice mailbox	44
Forward calls to your voice mailbox or another phone number	44
Prevent making or receiving calls	45
Allow calls only to certain numbers	45
Video sharing	46

Contacts**48**

About Contacts	48
Save phone numbers and mail addresses	48
Save a number from a received call or message	48
Contact your most important people quickly	49
Add your important contacts to the home screen	49
Set a ringtone for a contact	50

Add a picture for a contact	50	See your friends' status updates in one view	63
Send your contact information using My Card	50	Post your status to social networking services	63
Create a contact group	51	Link your online friends to your contacts list	63
Send a message to a group of people	51	See your friends' status updates on the home screen	64
Copy contacts from the SIM card to your phone	51	Upload a photo or video to a service	64
Back up your contacts to Nokia services	51	Share your location in your status update	64
Messaging	52	Contact a friend from a social networking service	65
About Messaging	52	Add an event to your phone calendar	65
Send a message	52		
Send a message to a contact	53	Camera	66
Send an audio message	53	About the camera	66
Read a received message	53	Take a photo	66
View a conversation	54	Save location info to your photos and videos	67
Listen to a text message	55	Take a photo in the dark	67
Change the writing language	55	Photo and video tips	67
Mail	55	Record a video	68
About Mail	55	Send a photo or video	69
Nokia Mail	56	Share a photo or video directly from the camera	69
About Exchange ActiveSync	56		
Add a mailbox	57	Your photos and videos	70
Read a received mail	57	Gallery	70
Send a mail	59	Edit a photo you have taken	73
Respond to a meeting request	59	Video editor	73
Open mail from the home screen	59	Print a photo you have taken	74
		View photos and videos on a TV	75
Internet	60	Videos and TV	76
About the web browser	60	Videos	76
Browse the web	60		
Add a bookmark	61	Music and audio	77
Subscribe to a web feed	61	Music player	77
Allow a website to use your location info	62	About Nokia Music	79
Social networks	62	Protected content	80
About Social	62	Record sounds	80

Play music through a radio	81	USB data cable	121
FM radio	82	Close a network connection	123
Maps	83	Find more help	124
About Maps apps	83	Support	124
Navigate to your destination	84		
Find and view locations	89	Access codes	124
Save and share places	94		
Report incorrect map information	95	Product and safety information	125
Time management	95	Index	132
Clock	95		
Calendar	97		
Office	101		
Quickoffice	101		
Read PDF documents	101		
Use the calculator	101		
Write a note	102		
Translate words	102		
Open or create zip files	103		
Chat with your colleagues	103		
Phone management	103		
Keep your phone software and applications up to date	103		
Manage files	105		
Free up phone memory	107		
Manage applications	107		
Synchronise content	108		
Copy contacts or pictures between phones	110		
Protect your phone	110		
Prepare your phone for recycling	112		
Connectivity	112		
Internet connections	112		
Keep track of your data traffic	113		
Wi-Fi	114		
VPN connections	115		
NFC	116		
Bluetooth	118		

Safety

Read these simple guidelines. Not following them may be dangerous or illegal. For further info, read the complete user guide.

SWITCH OFF IN RESTRICTED AREAS



Switch the device off when mobile phone use is not allowed or when it may cause interference or danger, for example, in aircraft, in hospitals or near medical equipment, fuel, chemicals, or blasting areas. Obey all instructions in restricted areas.

ROAD SAFETY COMES FIRST



Obey all local laws. Always keep your hands free to operate the vehicle while driving. Your first consideration while driving should be road safety.

INTERFERENCE



All wireless devices may be susceptible to interference, which could affect performance.

QUALIFIED SERVICE



Only qualified personnel may install or repair this product.

BATTERIES, CHARGERS, AND OTHER ACCESSORIES



Use only batteries, chargers, and other accessories approved by Nokia for use with this device. Do not connect incompatible products.

KEEP YOUR DEVICE DRY



Your device is not water-resistant. Keep it dry.

GLASS PARTS



The device screen is made of glass. This glass can break if the device is dropped on a hard surface or receives a substantial impact. If the glass breaks, do not touch the glass parts of the device or attempt to remove the broken glass from the device. Stop using the device until the glass is replaced by qualified service personnel.

PROTECT YOUR HEARING

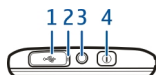




To prevent possible hearing damage, do not listen at high volume levels for long periods. Exercise caution when holding your device near your ear while the loudspeaker is in use.

Get started

Keys and parts

Top



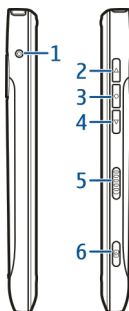
- 1 Micro-USB connector 
- 2 Charging indicator light
- 3 Nokia AV connector (3.5 mm)
- 4 Power key 


Front



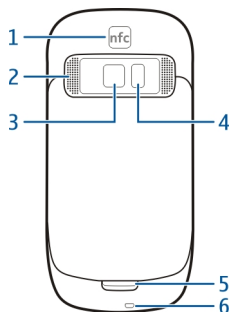
- 1 Earpiece
- 2 Call key
- 3 Microphone
- 4 Menu key
- 5 End key
- 6 Front camera

Sides



- 1 Charger connector
- 2 Volume up/Zoom in key
- 3 Voice key
- 4 Volume down/Zoom out key
- 5 Key lock switch
- 6 Camera key 

Back



- 1 NFC area
- 2 Loudspeaker
- 3 Back camera
- 4 Camera flash
- 5 Secondary microphone
- 6 Wrist strap hole

Touch screen

To control your phone, lightly touch the screen with your fingertips. The screen does not respond when you use your fingernails.

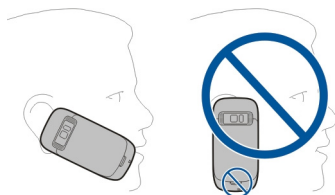
If your fingertips are cold, the screen may not respond to your touch.

Important: Avoid scratching the touch screen. Never use an actual pen, pencil, or other sharp object on the touch screen.

Noise cancellation

If you are calling from a noisy environment, your phone filters out background noise to make your voice sound clearer to the person at the other end of the line.

Noise cancellation is not available when using the loudspeaker or a headset.



For the best noise cancellation, hold the phone with the earpiece to your ear and the main microphone towards your mouth. Do not cover the secondary microphone on the back of the phone.

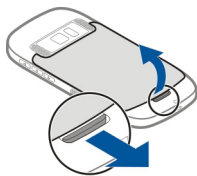
Insert the SIM card and battery

Important: This device is designed to be used with a standard SIM card (see figure) only. Use of incompatible SIM cards may damage the card or the device, and may corrupt data stored on the card. Please consult your mobile operator for the use of a SIM card that has a mini-UICC cutout.

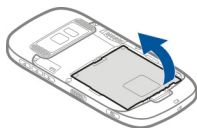


Follow the instructions carefully, to avoid damaging the back cover.

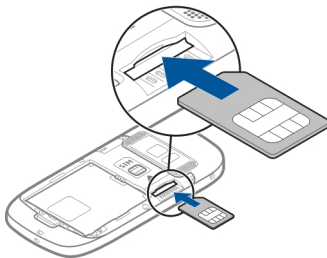
- 1 Pull the back cover release latch towards the bottom of the phone, and remove the cover.



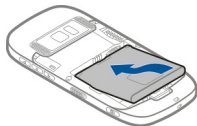
- 2 If the battery is inserted, lift the battery out.



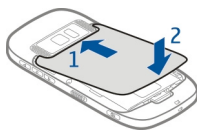
- 3 Insert a SIM card. Make sure the contact area of the card is facing up. Push the card in, until it locks into place.



- 4 Line up the contacts of the battery and the battery compartment, and insert the battery.



- 5 To replace the back cover, direct the top locking catches toward their slots, and press down until the cover locks into place.



Insert a memory card

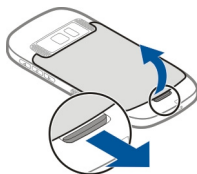
Use only compatible MicroSD and MicroSDHC cards approved by Nokia for use with this device. Incompatible cards may damage the card and the device and corrupt data stored on the card.

! Important: Do not remove the memory card when an application is using it. Doing so may damage the memory card and the device and corrupt data stored on the card.

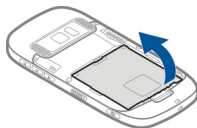


Keep all memory cards out of the reach of small children.

- 1 Switch the phone off.
- 2 Pull the back cover release latch towards the bottom of the phone, and remove the cover.



- 3 If the battery is inserted, lift the battery out.



- 4 Insert a compatible memory card into the slot. Make sure the contact area of the card is facing down.



- 5 Push the card in, until it clicks into place.
- 6 Replace the battery and the back cover. Make sure the cover is properly closed.

You can record high-definition videos. If you are recording a video to a memory card, for the best performance, use fast, high-quality microSD cards from known manufacturers. The recommended microSD card class is 4 (32Mbit/s (4MB/s)) or higher.

Remove a memory card

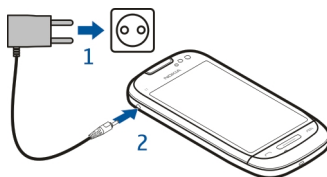
- 1 Switch the phone off.
- 2 Remove the back cover of the phone.
- 3 If the battery is inserted, lift the battery out.
- 4 Push the card in, until it is released, and pull the card out.

Charging

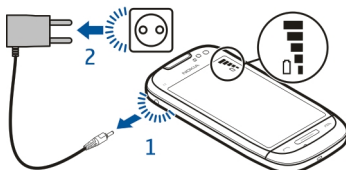
Charge the battery

Your battery has been partially charged at the factory, but you may need to recharge it before you can switch on your phone for the first time.

If the phone indicates a low charge, do the following:



1

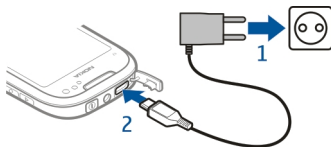


2

You do not need to charge the battery for a specific length of time, and you can use the phone while it is charging.

If the battery is completely discharged, it may take several minutes before the charging indicator is displayed or before any calls can be made.

Tip: You can also use a compatible USB charger to charge your battery.



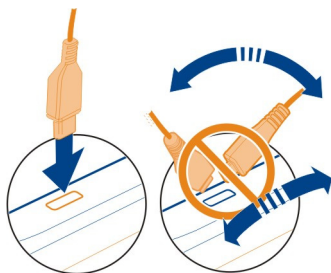
Charge the battery over USB

Battery low, but you don't have a charger with you? You can use a compatible USB cable to connect your phone to a compatible device, such as a computer.

You can use USB charging when a wall outlet is not available. Data can be transferred while charging the device. The efficiency of USB charging power varies significantly, and it may take a long time for charging to start and the device to start functioning.

You can use your phone while it's charging.

To avoid breaking the charger connector, be careful when connecting or disconnecting the charger cable.




Switch the phone on or off

Switch on

Press and hold the power key  until the phone vibrates.



Switch off

Press and hold the power key .




Use your phone for the first time

Get started with your phone – copy contacts, messages, and other stuff from your old phone. Your phone guides you when you switch your phone on for the first time.

To start an action, select . To skip an action, select .

To use Nokia services, create a Nokia account. You need an internet connection. For info about possible costs, contact your network service provider. If you can't connect to the internet, you can create an account later.

If you already have a Nokia account, type in your username and password, then select .

Tip: Forgotten your password? You can request it to be sent to you in a mail or text message.

Use the Phone switch app to copy your stuff, such as:

- Contacts
- Messages
- Pictures
- Videos

When you set up your mail account, you can set your inbox to be shown on your home screen, so you can easily check your mail.

If you need to make an emergency call when setting up your phone, press the call key.

Copy contacts or photos from your old phone

Want to copy important info from your previous Nokia phone and start using your new phone quickly? Use the Phone switch app to copy, for example, your contacts, calendar entries, and photos to your new phone, free of charge.

Your previous phone needs to support Bluetooth.



- 1 Select > **Settings** > **Connectivity** > **Data transfer** > **Phone switch**.
- 2 Select your old phone from the list, then pair the phones. Bluetooth needs to be on in both phones.
- 3 If the other phone requires a passcode, type in the passcode in both phones.
The passcode is for the current connection only, and you can define it yourself. The passcode in some phones is fixed. For details, see the user guide of the other phone.
- 4 Select what you want to copy, then select **OK**.

If your old Nokia phone doesn't have the Phone switch app, your new phone sends it in a message using Bluetooth. To install the app, open the message in your old phone, then follow the instructions shown on the phone.

Tip: You can also use the Phone switch app to copy content from other phones later.

Lock or unlock the keys and screen

To avoid accidentally making a call when your phone is in your pocket or bag, lock the keys and screen of your phone.

Slide the lock key.



Tip: To unlock, you can also press the menu key, then select **Unlock**.

Set the keys and screen to lock automatically

- 1 Select > **Settings** and **Phone** > **Display** > **Screen/keylock time-out**.

- 2 Define the length of time after which the keys and screen are locked automatically.

Antenna locations

Avoid touching the antenna area while the antenna is in use. Contact with antennas affects the communication quality and may reduce battery life due to higher power level during operation.



The antenna area is highlighted.

Change the volume of a call, song, or video

Use the volume keys.

You can change the volume during a call or when an app is active.

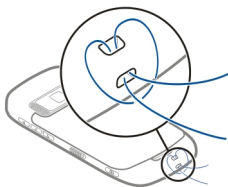
The built-in loudspeaker lets you speak and listen from a short distance without having to hold the phone to your ear.

Switch the loudspeaker on or off during a call

Select  or .

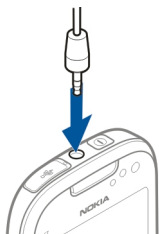
Attach the wrist strap

Thread the wrist strap, and tighten it.





Headset


You can connect a compatible headset or compatible headphones to your phone.




Use the user guide in your phone

 Your phone has a built-in user guide. It's always with you, available when needed. Select  > **User guide**.

Open the user guide from an application

Select  > **User guide**. This is not available for every application.

Search the user guide

When the user guide is open, select  > **Search**, and enter a letter or a word in the search field.

Open an application from the user guide

Select the application link in a topic.

To switch back to the user guide, press and hold the menu key, swipe left or right, and select the user guide.

Links to related topics may be at the end of instructions.


Install Nokia Suite on your computer

With the Nokia Suite PC app, you can manage content on your phone, and keep it in sync with your compatible computer. You can also update your phone with the latest software, and download maps.

A connection to the internet may be needed. For info about data costs, contact your network service provider.

Download the latest version of Nokia Suite from www.nokia.com/nokiasuite to your computer.

Install Nokia Suite using your phone

- 1 Connect your phone to your computer with a compatible USB cable.
If you are using the Windows XP or Windows Vista operating system on your computer, set the USB mode of your phone to Mass storage. To set the USB mode on your phone, swipe down from the notification area, then select  > **Mass storage**.
Your phone mass memory and memory card are shown as removable disks on your PC.
- 2 If the installation window doesn't open automatically, in your computer file manager, find and open your phone, then double-click the Nokia Suite installation file.
- 3 Follow the instructions shown on your computer.
- 4 When the installation is complete, if you are using Windows XP or Windows Vista on your computer, make sure the USB mode of your phone is Nokia Suite.

To learn more about Nokia Suite, and to check which operating systems Nokia Suite works with, go to www.nokia.com/nokiasuite.

Basic use

Use the toolbar

The toolbar at the bottom of the display helps you browse your phone easily.



Open the main menu.



Make a call.



Return to the previous view.



Search for applications.



Open the options menu.

Touch screen actions

To interact with the user interface, tap or tap and hold the touch screen.

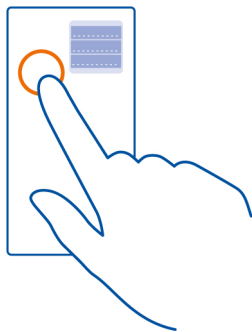
! Important: Avoid scratching the touch screen. Never use an actual pen, pencil, or other sharp object on the touch screen.

Open an application or other screen element

Tap the application or element.

Access functions quickly

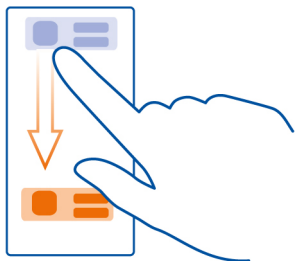
Tap and hold the item. A pop-up menu with available options opens.



Example: To send an image or delete an alarm, tap and hold the image or alarm, and from the pop-up menu, select the appropriate option.

Drag an item

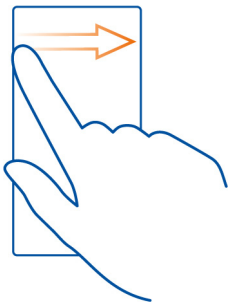
Tap and hold the item, and slide your finger across the screen.



Example: You can drag items on the home screen.

Swipe

Place a finger on the screen, and steadily slide your finger in the desired direction.



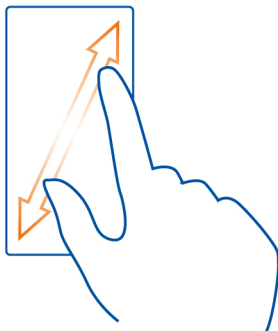
Example: To switch to another home screen, swipe left or right.

To scroll in a list or menu, slide your finger quickly up or down the screen, then lift your finger. To stop the scrolling, tap the screen.

Zoom in and out

Place two fingers on an item, such as a map, picture, or web page, and slide your fingers apart or together.

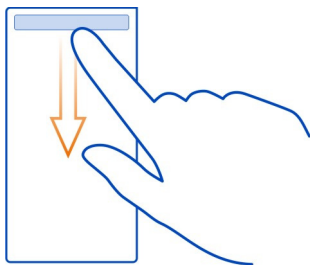
Tip: You can also tap the item twice.



Use shortcuts

You don't have to navigate long paths to, for example, open or close an internet connection, or to silence your phone. You can access these settings directly in the status menu, no matter what application or view you're in.

Swipe down from the notification area.



In the status menu, you can do the following:

- View notifications of missed calls or unread messages
- Silence your phone
- Modify the connectivity settings
- View available Wi-Fi connections, and connect to a Wi-Fi network

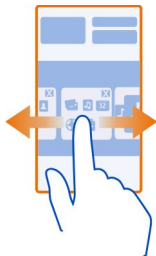
- Manage Bluetooth connections

Tip: When listening to music, you can quickly access the music player from the status area.

Switch between open applications

You can see which applications and tasks are open in the background, and switch between them.

Press and hold the menu key, swipe left or right, and select the desired application.



Applications running in the background increase the demand on battery power and use memory. To close an application that you are not using, select .

Tip: To close all open applications, select and hold the task switcher, and from the pop-up menu, select **Close all**.

Write text

Enter text with the virtual keyboard

Use the virtual keyboard

To activate the virtual keyboard, select a text input field. You may use the virtual keyboard both in landscape and portrait mode.

Virtual keyboard in portrait mode may not be available in all writing languages.



- 1 Virtual keyboard
- 2 Close key - Close the virtual keyboard.
- 3 Shift and caps lock key - To enter an upper case character when writing in lower case, or vice versa, select the key before entering the character. To activate caps lock mode, select the key twice.
- 4 Character range - Select the desired character range, such as numbers or special characters.
- 5 Arrow keys - Move the cursor left or right.
- 6 Space bar - Insert a space.
- 7 Input menu - Activate predictive text input, or change the writing language.
- 8 Enter key - Move the cursor to the next row or text input field. Additional functions are based on the current context. For example, in the web address field of the web browser, it acts as the Go icon.
- 9 Backspace key - Delete a character.

Switch between the virtual keyboard and keypad in portrait mode



Select  > Alphanumeric keypad or QWERTY keyboard.

Add an accent to a character


Select and hold the character.

Switch predictive text on in the on-screen keyboard


Predictive text input is not available in all languages.

- 1 Select  > Input options > Activate prediction.  is shown.
- 2 Start writing a word.
- 3 To see suggestions for possible words, select the word you're writing. When the correct word is shown, select the word.
- 4 If the word is not in the dictionary, the phone suggests an alternative word from the dictionary. To add the new word to the dictionary, select the word you have written.

Switch predictive text off


Select  > Input options > Deactivate prediction.

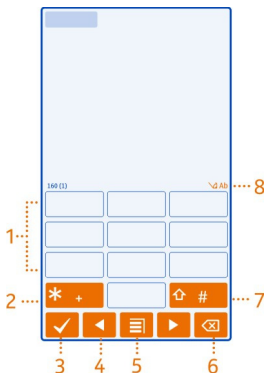
Change the text input settings

Select  > Input options > Settings.

Enter text with the virtual keypad**Use the virtual keypad**

If you prefer to use the alphanumeric keypad when writing in portrait mode, you can switch from the virtual keyboard to the virtual keypad.

- 1 Select a text input field.
- 2 Select  > **Alphanumeric keypad**.



- 1 Number keys
- 2 * - Enter a special character, or when predictive text input mode is activated and the word underlined, cycle through the word candidates.
- 3 Close key - Close the virtual keypad.
- 4 Arrow key - Move the cursor left or right.
- 5 Input menu - Activate predictive text input, change the writing language, or switch to the virtual keyboard.
- 6 Backspace key - Delete a character.
- 7 Shift key - Change the character case. To activate or deactivate predictive text input mode, quickly select the key twice. To switch between the letter and number modes, select and hold the key.
- 8 Text input indicator (if available) - Indicates the character case, and if letter or number mode or predictive text input mode is activated.

Activate traditional text input with the virtual keypad

Select # twice quickly.

Enter a character

- 1 Select a number key (1-9) repeatedly, until the desired character is displayed. There are more characters available than are visible on the key.
- 2 If the next letter is located on the same key, wait until the cursor is displayed or move the cursor forward, and select the key again.

Insert a space


Select **0**.

Move the cursor to the next line

Select **0** three times.

Activate predictive text input with the virtual keypad


Predictive text input is based on a built-in dictionary to which you can add new words. Predictive text input is not available for all languages.

- 1 Select  > **Activate predictive text**.
- 2 To write the desired word, use the keys 2-9. Select each key once for each letter. For example, to write Nokia when the English dictionary is selected, select **6** for N, **6** for o, **5** for k, **4** for i, and **2** for a. The word suggestion changes after each key selection.
- 3 If the word is not correct, select ***** repeatedly, until the correct match is displayed. If the word is not in the dictionary, select **Spell**, and enter the word using traditional text input mode, and select **OK**. If **?** is displayed after the word, the word is not in the dictionary. To add a word to the dictionary, select *****, enter the word using traditional text input mode, and select **OK**.
- 4 To insert a space, select **0**. To insert a common punctuation mark, select **1**, and then select ***** repeatedly, until the correct punctuation mark is displayed.
- 5 Start writing the next word.

Deactivate predictive text input

Select **#** twice quickly.

Define the writing language

Select  > **Settings and Phone** > **Touch input** > **Writing language**.

Change the language when writing

Select  > **Writing language**.

The available options may vary.

Display indicators

General icons



The touch screen and keys are locked.

Someone has tried to call you.

You have unread messages.

If the message icon is blinking, your Inbox folder may be full.

You have a missed calendar event.

An alarm is set.

Messages are waiting to be sent in the Outbox folder.

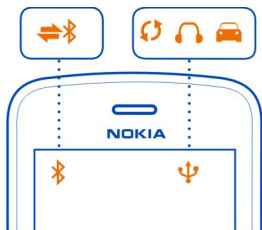
You're using your second phone line.

Incoming calls are forwarded to another number. If you have two phone lines, a number indicates the active line.

Your phone is ready for an internet call.

A data call is active.

Bluetooth and USB icons



Bluetooth is on.

If the icon is blinking, your phone is trying to connect to another device.

Your phone is sending data over Bluetooth.

A USB cable is connected to your phone.



The phone is syncing.

The FM transmitter is active.

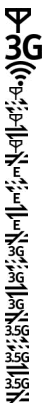
The FM transmitter is transmitting.

A compatible headset is connected to your phone.

A compatible car kit is connected to your phone.

A compatible text phone is connected to your phone.

Network icons



Your phone is connected to a GSM network.

Your phone is connected to a 3G network.

A Wi-Fi connection is open.

A GPRS data connection is opening or closing.

A GPRS data connection is open.

A GPRS data connection is on hold.

An EGPRS data connection is opening or closing.

An EGPRS data connection is open.

An EGPRS data connection is on hold.

A 3G data connection is opening or closing.

A 3G data connection is open.

A 3G data connection is on hold.

An HSPA connection is opening or closing.

An HSPA data connection is open.

An HSPA connection is on hold.

Set your phone to blink for missed calls or messages

When the phone notification light blinks, you have missed a call or a message has arrived.

Select  > **Settings and Phone** > **Notification lights** > **Notification light**.

Flashlight

The camera flash can be used as a flashlight. To switch the flashlight on or off, slide and hold the key lock switch for two seconds.

Do not shine the flashlight in anyone's eyes.

Search your phone and the internet



Explore your phone and the internet. You can search for mail, contacts, photos, music, or apps stored on your phone and on the internet.

Select  > **Search**.

- 1 Start writing a search word, then select from the proposed matches.
- 2 To search on the internet, select the internet search link at the end of the search results. You need an active internet connection.

Tip: You can add a search widget to the home screen. Tap and hold an empty area of the home screen, then select **Add widget** and the search widget from the list.


Use your phone offline

In places where you do not want to make or receive calls, you may still access your calendar, contacts list, and offline games if you activate the offline profile. Switch the phone off when mobile phone use is not allowed or when it may cause interference or danger.


Press the power key , and select **Offline**.

When the offline profile is activated, your connection to the cellular network is closed. All radio frequency signals between the phone and the cellular network are prevented. If you try to send a message, it is placed in the Outbox folder, and is sent only when another profile is activated.

You can also use your phone without a SIM card. Switch the phone off, and remove the SIM card. When you switch back on, the offline profile is activated.

 **Important:** In the offline profile you cannot make or receive any calls, or use other features that require cellular network coverage. You may be able to call the official emergency number programmed into your device. To make calls, you must first change to another profile.

When the offline profile is activated, you can still connect to a Wi-Fi network to, for example, read your mail or browse the internet. You can also use Bluetooth.

If NFC is activated, it is activated also in the offline profile. To deactivate NFC, select  > **Settings** and **Connectivity** > **NFC** > **NFC** > **Off**.


Remember to comply with any applicable safety requirements.

Prolong battery life


If it seems you're always looking for a charger, there are steps you can take to reduce the power consumption of your phone.

- Always charge the battery fully.
- When power saving mode is activated, phone settings, such as **Network mode** and the screen saver, are optimised.

Activate power saving mode

Press the power key , and select **Activate power saving**. To deactivate power saving mode, press the power key , and select **Deactivate power saving**.

Close the applications you are not using

Press and hold the menu key, swipe until the desired application is displayed, and select .


Sounds, themes, and effects


- Mute unnecessary tones, such as key tones.
- Use wired headphones, rather than the loudspeaker.
- Change the length of the time-out period after which the phone display switches off.

Set the length of the time-out period

Select  > **Settings and Phone** > **Display** > **Light time-out**.

Activate a dark theme and wallpaper

Select  > **Settings and Themes** > **General**.

To change the wallpaper, on the home screen, select  > **Change wallpaper**.

Deactivate background animation effects

Select  > **Settings and Themes** > **General** >  > **Theme effects** > **Off**.

Decrease the brightness of the display

Select  > **Settings and Phone** > **Display** > **Brightness**.

Deactivate the Big clock screen saver

Select  > **Settings and Themes** > **Screen saver** > **None**.


Network use

- If you are listening to music or otherwise using your phone, but do not want to make or receive calls, activate the offline profile.
- Set your phone to check for new mail less frequently.
- Use a Wi-Fi connection to connect to the internet, rather than a mobile data (GPRS or 3G) connection.
- If your phone is set to use both GSM and 3G networks (dual mode), the phone uses more power when searching for the 3G network.


Deactivate Bluetooth when not needed

Swipe down from the notification area, and select .

Stop your phone scanning for available Wi-Fi networks


Swipe down from the notification area, and select .

Establish a mobile data (3G or GPRS) connection only when needed

To close the mobile data connection, swipe down from the notification area, and select .

Restore original settings

If your phone is not working properly, you can reset some settings to their original values.

- 1 End all active calls and connections.
- 2 Select  > **Settings and Phone** > **Phone management** > **Factory settings** > **Restore**.
- 3 If prompted, enter the security code.

This does not affect documents or files stored on your phone.

After restoring the original settings, the phone switches off, and then on again. This may take longer than usual.

Personalisation

Profiles

About profiles

 Select  > **Settings** > **Profiles**.

Waiting for a call but can't let your phone ring? Your phone has various settings groups called profiles, which you can personalise for different events and environments. You can also create your own profiles.

You can personalise the profiles in the following ways:

- Change the ringtone and message alert tones.
- Change the volume of the ringtone and key tones.
- Mute key tones and notification tones.
- Activate vibration alerts.
- Set the phone to say the name of the contact who is calling.

Tip: Want quick access to the profiles? Add a profile widget to the home screen.

Personalise your ringtone and other tones

You can personalise your phone tones for each profile.

Select  > **Settings** > **Profiles**.

Select the profile, **Personalise**, and the desired option.

Tip: To download more ringtones from Nokia Store, select **Download sounds**. For more information, go to www.nokia.com/suppport.

Tip: To set your favourite song from the music player as your ringtone, select **Songs**.

Silence your phone

When the silent profile is switched on, all ringtones and alert tones are muted. Switch to this profile when you are, for example, at the cinema or in a meeting.

Swipe down from the notification area, then select **Silent**.

Change your profile for meetings


When the meeting profile is activated, your phone discreetly beeps once instead of ringing.

Press the power key , and select **Meeting**.

Create a new profile

How can you make your phone meet your needs at work or college or home? You can create new profiles for different situations, and give them appropriate names.

Select  > **Settings** > **Profiles**.

Select  > **Create new**, and define your profile settings.

Tip: You can set a ringtone specifically for your profile. Select **Ringtone**.


Set a timed profile


You can activate a profile until a set time, after which the previously used profile is activated.

Select  > **Settings** > **Profiles**.

- 1 Select the desired profile, and select **Timed**.
- 2 Set the time that you want the timed profile to expire at.

Change your theme

 Themes can freshen up your phone – change the look and colour scheme.

- 1 Select  > **Settings** > **Themes**.
- 2 Select **General** and a theme.

Tip: To download more themes from Nokia Store, select **Download themes**. To learn more about Nokia Store, go to www.nokia.com/support.

Home screen

About the home screen

On the home screen, you can:

- See notifications or indicators of missed calls and received messages
- Open your favourite apps
- Control apps, such as the music player
- Add shortcuts for different features, such as writing a message
- View your favourite contacts, and quickly call or send messages to them

You can have more than one home screen – try separating your work and private life onto their own home screens.

Your home screen is interactive. To quickly check your calendar, select the date. To set an alarm, select the clock.

Personalise the home screen

Want to see your favourite landscape or photos of your family in the background of the home screen? You can change the wallpaper, and rearrange items on each home screen individually, to personalise them to your liking.

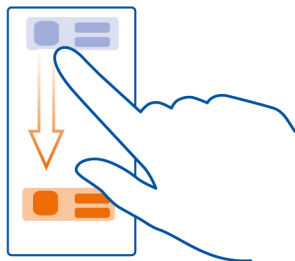
Change the wallpaper

Tap and hold an empty area on the home screen, then select **Change wallpaper**.

Tip: Download more background images from Nokia Store. For more info, go to www.nokia.com/support.

Rearrange items on the home screen

Tap and hold an item, then drag it to a new location.



Tip: You can drag and drop items between different home screens.

Add a new home screen

Select  > Add another home screen.

Add a widget to the home screen


Interested in today's weather or what's currently in the news? You can add mini-applications (widgets) to your home screen, and see your most relevant information at a glance.

Tap and hold an empty area on the home screen, and from the pop-up menu, select **Add widget** and a widget.


A widget can enhance the related application, and may also change the way the application works.

Tip: You can download more widgets from Nokia Store.

Using services or downloading content may cause transfer of large amounts of data, which may result in data traffic costs.

Some home screen widgets may connect to the internet automatically. To prevent this, close the mobile data connection. Swipe down from the notification area, and select .

Remove a widget from the home screen

Select and hold the widget, and select .

Add a shortcut to the home screen

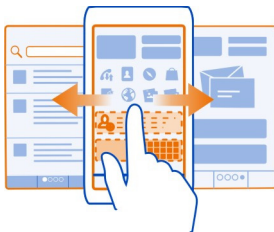
Did you know that you can create shortcuts to your most used applications and features? You can add shortcuts to applications or actions, such as writing a message.

Tap and hold an empty area on the home screen, and from the pop-up menu, select **Add shortcut** and the application or action.

Switch between home screens

You can have more than one home screen. For example, create separate home screens for work and private life, and personalise them to have different content.


To switch to another home screen, swipe left or right.




... indicates your current home screen.

Add your important contacts to the home screen

Add your most important contacts to the home screen, so you can quickly call or send messages to them.

Select  > **Contacts**.

Select a contact that is stored in your phone memory and  > **Add to Home screen**.


Call a contact

On the home screen, select the contact, and press the call key. If the contact has more than one number, select the desired number.

Send a message to a contact

On the home screen, select the contact and **Message**.


Remove a contact from the home screen

On the home screen, select and hold the contact, and select .


The contact is removed from the home screen, but remains in your contacts list.

Organise your apps

Want to find your most used apps more quickly? In the main menu, you can organise your apps into folders, hiding your least used apps.

Select .

Create a new folder

Select  > **New folder**.


Move an app to a folder

Select and hold the app, then select **Move to folder** and the new folder.


Tip: To drag and drop apps and folders, in the menu, tap and hold the screen, then select **Arrange**.

Download a game, app, or other item

Download free games, apps, or videos, or buy more content to your phone. From Nokia Store, you can find content designed specifically for your phone.

- 1 Select  > **Store**, then sign in to your Nokia account.
- 2 Select the item.
- 3 If the item has a price, select **Buy**. If the item is free, select **Download**.
- 4 You can pay with a credit card, or, if available, on your phone bill.
To save your card details to your Nokia account, select **Add**.
- 5 Select **Pay**.
- 6 To confirm, type in your Nokia account username and password, then select **Continue** to start downloading.

When the download is complete, you can open or view the item. You can continue browsing for more content while downloading.

The content type determines where the item is stored in your phone. To change the default location, select  > **Installation preferences** and where you want to store items.

Tip: Use a Wi-Fi connection to download larger files, such as games, apps, or videos.



Tip: To avoid typing in your payment card details over and over when buying items from Nokia Store, save your details to your Nokia account. You can add more than one payment card, and choose which one to use when buying.

The availability of payment methods depends on your country of residence and your network service provider.

For more info on an item, contact the publisher of the item.

Telephone

Call a phone number

- 1 On the home screen, select , then type in the phone number.
To delete a number, select .
To type in the + character, used for international calls, select * twice.
- 2 Press the call key.
- 3 To end the call, press the end key.

Switch the loudspeaker on during a call

To allow others in the room to join in with a call, switch the built-in loudspeaker on.


Select .

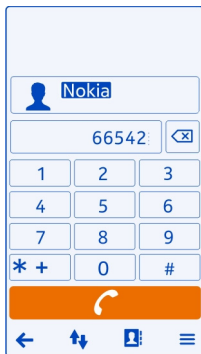
When you make or receive a video call, the loudspeaker is automatically switched on.

Switch the loudspeaker off

Select .

Search for a contact from the dialler

On the home screen, select , then start writing the contact's first or second name. You can also search by company name. Select each number key once for each letter. For example, to search for Nokia, select **6**, **6**, **5**, **4**, then **2**.

**Call the found contact**

Select the contact.

Send a message to the contact

Select and hold the contact, and from the contact card, select **Message**.

Make a video call to the contact

Select and hold the contact, and from the contact card, select **Video call**.

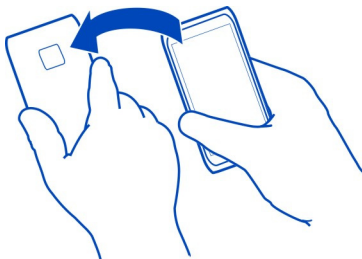
Turn to silence your phone

If your phone rings in a situation where you do not want to be disturbed, you can turn the phone to silence the ringtone.

Switch the turn to silence feature on

Select  > **Settings** and **Phone** > **Sensor settings** > **Silence calls** > **On**.

When your phone rings, turn your phone face down.



Call a contact

- 1 Select > **Contacts**.
- 2 To search for a contact, select , then write the first letters or characters of the first or second name in the search field.
- 3 Select the contact.
- 4 In the contact card, select **Voice call**.
- 5 If the contact has more than one phone number, select the number you want to call.

Answer a waiting call

You can answer a call when you're already in another call. Call waiting is a network service.

Press the call key. The first call is put on hold.

Switch on or off, or check the status of the service

Select > **Settings and Calling** > **Call** > **Call waiting** > **Activate**, **Deactivate**, or **Check status**.

Swap between an active call and a call on hold

Select > **Swap**.


Connect the call on hold to the active call

Select > **Transfer**. You disconnect yourself from the calls.

End an active call

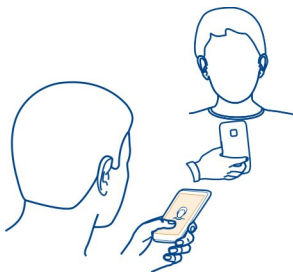
Press the end key.

End both calls

Select  > End all calls.

Make a video call

Do you have friends or family that you don't see in person very often? For a face-to-face chat, why not make a video call to them?




Video calls are a network service, and to make a video call, you need to be in a 3G network.

For info on availability and costs, contact your network service provider.

Video calls can only be made between two parties. Video calls cannot be made while another voice or video call is active.

Make a video call to a contact



- 1 Select  > **Contacts** and the contact.
- 2 In the contact card, select **Video call**.

The front camera is used by default for video calls. Starting a video call may take a while.


The video call is active when you see two videos, and hear the sound through the loudspeaker. If the call recipient does not want to send video, you only hear the voice of the caller, and may see an image or a blank screen.

- 3 To end the video call, press the end key.

Make a video call to a phone number

- 1 On the home screen, select , then type in the phone number.
- 2 Select  > **Video call**.

Answer a video call

When a video call arrives,  is shown.

- 1 Press the call key.
- 2 To start sending live video, select **Yes**.


When you answer the video call, the loudspeaker is automatically switched on.

If you do not start sending video, you only hear the voice of the caller. A grey screen replaces your own video.


Start sending live video during a video call

Select  > **Enable** > **Sending video**.

Replace the grey screen with a photo

- 1 Select  > **Settings and Calling** > **Call** > **Image in video call**.
- 2 Select **User defined** and the photo.

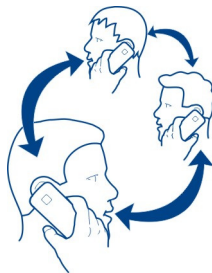
Decline a video call

When a video call arrives,  is shown.

Press the end key.



Make a conference call

You can have a conference call with up to six people, including yourself. Conference calls are a network service.



Video conference calls are not supported.



- 1 Make a call to the first person.

- 2 To make a call to another person, select  > **New call**. Type in the phone number, or type in the first letters of a contact, then select the contact. The first call is put on hold.
- 3 When the new call is answered, select  > **Conference**.

Add another person to a conference call



Call the person, and add the new call to the conference call.

Have a private conversation with someone in the conference call

Select  > **Show participants**. Go to the person, then select  > **Private**. The conference call is put on hold on your phone. The other people continue the conference call.

To return to the conference call, select  > **Conference**. Or, if there are more than three people in the call, select  > **Add to conference**.

Drop someone from a conference call you have started

Select  > **Show participants**. Go to the person, then select  > **Drop participant**.

End an active conference call


Press the end key.

Call the numbers you use the most

You can quickly call your friends and family when you assign your most-used phone numbers to the number keys of your phone.

Select  > **Settings and Calling** > **Speed dialling**.

Assign a phone number to a number key

- 1 Select the number key to which you want to assign the phone number.
1 () is reserved for the voice mailbox.
- 2 Select the contact from your contacts list.

Remove or change a phone number assigned to a number key

Select and hold the assigned key, and from the pop-up menu, select **Remove** or **Change**.

Make a call


On the home screen, select , then select and hold the assigned number key.

Use your voice to call a contact

You can use your voice to make calls or control your phone.

Voice commands are not dependent on the speaker's voice. Commands are automatically created by your phone.


When adding contacts or editing voice commands, do not use very short or similar names for different contacts or commands.

 **Note:** Using voice tags may be difficult in a noisy environment or during an emergency, so you should not rely solely upon voice dialling in all circumstances.

When you use voice dialling, the loudspeaker is in use. Hold the phone a short distance away when you say the voice command.

- 1 On the home screen, press and hold the call key. If a compatible headset with the headset key is attached, press and hold the headset key.
- 2 A short tone sounds, and **Speak now** is shown. Say clearly the name that is saved for the contact.
- 3 The phone plays a synthesised voice command for the recognised contact in the selected phone language, and shows the name and number. To cancel the voice dialling, select **Quit**.

Listen to a voice command for a contact

- 1 Select a contact and  > **Voice tag details**.
- 2 Select a contact detail.

If several numbers are saved for a name, you can say also the name and the number type, such as mobile or telephone.

Make calls over the internet

About internet calls

You can make and receive calls over the internet. Internet call services may support calls between computers, between mobile phones, and between a VoIP device and a traditional telephone. The internet call service is a network service.

Some internet call service providers allow free internet calls. For availability and connectivity costs, contact your internet call service provider.

To make or receive an internet call, you must be in the service area of a Wi-Fi network or have a packet data (GPRS) connection in a 3G network, and be signed in to an internet call service.

Install an internet call service


You can search for internet call services from Nokia Store. For more info, go to www.nokia.com/support.

- 1 Download an installation widget for the internet call service.
- 2 To start the installation, select the installation widget.
- 3 Follow the instructions shown on the phone.

When an internet call service has been installed, a tab for the service is shown in the contacts list.

Make an internet call



When you are signed in to an internet call service, you can make a call from the friends list or the contacts list.

Select  > **Contacts**.

Call a contact in the friends list

- 1 Open the internet call service tab, then sign in to an internet call service.
- 2 Select a contact from the friends list, then select **Internet call**.

Make an internet call to a phone number

- 1 On the home screen, select , then type in the number.
- 2 Select  and an option for making an internet call.





Call the last dialled number

Trying to call someone, but they are not answering? It's easy to call them again. In the call log, you can see info about the calls you have made and received.

On the home screen, press the call key, then select the number or contact.

Record a phone conversation

You can record your phone conversations.

- 1 During a voice call, select  > **Go to Home screen**, then select  > **Recorder**.
- 2 To start recording, select .
- 3 To stop recording, select . The sound clip is automatically saved to the Sound files folder in the Files app.

You cannot use the recorder during a data call or when a GPRS connection is open.

View your missed calls

On the home screen, you can see when you have missed calls. The number of all missed events, including missed calls and received messages, is shown.

To view the phone number, swipe down from the notification area, then select the missed calls notification. The caller's name is shown if stored in the contacts list.

Call back the contact or number

Select the contact or number.

View the missed calls list later


On the home screen, press the call key, then open the missed calls tab .

Call your voice mailbox

You can forward calls to your voice mailbox, where callers can leave you a message if you don't answer. Voice mailbox is a network service.

On the home screen, select , then select and hold **1**.

Change the phone number of your voice mailbox

- 1 Select  > **Settings and Calling** > **Call mailbox**.
- 2 Select and hold the mailbox, then select **Change number**.
- 3 Type in the number (ask your network service provider for it), then select **OK**.

Forward calls to your voice mailbox or another phone number

If you cannot answer your calls, you can forward incoming calls.

Select  > **Settings and Calling** > **Call divert** > **Voice calls**.

Call forwarding is a network service. For details, contact your network service provider.

Forward voice calls when unanswered

Select **If not answered** > **Activate** > **To voice mailbox**.

Forward voice calls when you are currently in a call

Select **If busy** > **Activate** > **To voice mailbox**.

More than one forwarding option can be used at the same time.

Forward all voice calls to another phone number

- 1 Select **All voice calls** > **Activate** > **To other number**.

- 2 Type in the number. To use a number saved in your contacts list, select **Find**.

Call barring and call forwarding cannot be used at the same time.

Prevent making or receiving calls

Sometimes you may want to restrict the calls that can be made or received with your phone. You can, for example, restrict all outgoing international calls or incoming calls when you are abroad.

Select  > **Settings and Calling** > **Call barring**.

Call barring is a network service.

To change the settings, you need the barring password from your network service provider.

Prevent making calls

- 1 If an internet call service is installed, select **Mobile call barring**.
- 2 To prevent making any calls or international calls, select **Outgoing calls** or **International calls**. To prevent making international calls, but allow calls to your home country, select **International calls except to home country**.
- 3 Select **Activate**. Call barring affects all calls, including data calls.

Prevent receiving calls

- 1 If an internet call service is installed, select **Mobile call barring**.
- 2 To prevent receiving any calls or international calls when you are abroad, select **Incoming calls** or **Incoming calls when roaming**.
- 3 Select **Activate**.

Prevent anonymous internet calls

Select **Internet call barring** > **Anonymous call barring** > **On**.

Call barring and call forwarding cannot be used at the same time.

Allow calls only to certain numbers

You can allow calls only to family members or other key phone numbers, and block all other phone numbers.



Select  > **Contacts and**  > **SIM numbers** > **Fixed dialling numbers**.


Not all SIMs support the fixed dialling service. You need your PIN2 code from your service provider.

Switch fixed dialling on

Select  > **Activate fixed dialling**, then type in the PIN2 code.

Select the people to whom calls are allowed

- 1 Select  > **New SIM contact**.
- 2 Type in the PIN2 code.
- 3 Write the contact name and phone number to which calls are allowed, then select .

To add a contact from the contacts list to the fixed dialling list, select  > **Add from Contacts** and a contact.

To send a text message to a SIM contact while the fixed dialling service is active, you need to add the text message centre number to the fixed dialling list.

Video sharing**About video sharing**

You can share live or recorded video from your phone to another compatible phone during a voice call. Video sharing is a network service.

When you switch video sharing on, the loudspeaker is automatically switched on. If you do not want to use the loudspeaker, you can use a compatible headset.

Video sharing requirements

To share video, both you and the recipient must:

- Be in a 3G network. If either of you move outside the 3G network, the voice call continues.
- Have the video sharing feature switched on
- Have person-to-person connections set up


For more info on the service, 3G network availability, and fees associated with using this service, contact your network service provider.

Set up video sharing

To set up video sharing, you need person-to-person and 3G connection settings.

A person-to-person connection is also known as a Session Initiation Protocol (SIP) connection. Contact your network service provider for the SIP profile settings, and save them to your phone. Your network service provider may send you the settings in a configuration message or give you a list of the needed parameters.

Set up a person-to-person connection

- 1 Select  > **Settings**.
- 2 Select **Connectivity** > **Admin. settings** > **SIP settings** and a SIP profile.
- 3 Type in the needed SIP profile settings.




Change video sharing settings

Select  > **Settings** and **Connectivity** > **Video sharing**.

Use a 3G connection


For details about networks, contact your network service provider.

Add a SIP address to a contact

- 1 Select  > **Contacts**.
- 2 Select a contact and .
- 3 Select  > **Share video**.
- 4 Write the SIP address in the format username@domainname (you can use an IP address instead of a domain name).

If you do not know the SIP address for the contact, you can use the phone number of the recipient, including the country code, to share video (if supported by the network service provider).


Share live or recorded video

During an active voice call, select  > **Share video**.

- 1 To share live video, select **Live video**.
To share a video, select **Video**.
- 2 Select the desired SIP address or phone number that is stored in the contact card for the recipient. If the SIP address or phone number is not available, manually type in the details, then select **OK**. If typing in a phone number, you need to type in the country code. The invitation is sent to the SIP address.

If you access another application while sharing a video, the sharing is paused.


Continue sharing

Press and hold the menu key, swipe left or right, then select the active call and  > **Resume video sharing**.

Stop sharing video

Select **Stop**. To end the voice call, press the end key. When you end the call, video sharing also ends.

Save automatically the live video you share

Select  > **Settings and Connectivity** > **Video sharing** > **Video saving** > **On**.


Accept a video sharing invitation

Select **Yes**. Video sharing begins automatically.

Contacts

About Contacts




Select  > **Contacts**.



You can save and organise your friends' phone numbers, addresses, and other contact information. If you want to keep in touch with your most important contacts easily, you can set them as favourites.

Save phone numbers and mail addresses



You can save your friends' phone numbers, mail addresses, and other information to your contacts list.

Select  > **Contacts**.

Add a contact to the contacts list

- 1 Select .
- 2 Select a contact detail, and fill in the field.
- 3 When you have added the details, select .

Edit contact information

- 1 Select a contact and .
- 2 Select a contact detail, and modify the information.
- 3 When you have edited all the necessary details, select .

Add more details to a contact card

Select a contact,  > , and the desired contact detail.


Save a number from a received call or message

Have you received a call or a message from a person whose phone number is not yet saved in the contacts list? You can easily save the number in a new or existing contact list entry.

Save a number from a received call


- 1 On the home screen, press the call key.
- 2 Open the Received calls tab ↓.
- 3 Select and hold a phone number, and from the pop-up menu, select **Save to Contacts**.
- 4 Select whether you want to create a new contact list entry or update an existing one.

Save a number from a received message

- 1 Select  > **Messaging**.
- 2 In the Conversations list, select and hold a message, and from the pop-up menu, select **Save to Contacts**.
- 3 Select whether you want to create a new contact list entry or update an existing one.

Contact your most important people quickly

You can set your most important contacts as favourites. Your favourites are at the top of the Contacts list, so you can contact them quickly.

Select  > **Contacts**.

Set a contact as a favourite


Select and hold a contact, and from the pop-up menu, select **Add to favourites**.


Remove a contact from favourites

Select and hold a contact, and from the pop-up menu, select **Remove from favourites**. The contact is not deleted from your standard contacts list.

Add your important contacts to the home screen

Add your most important contacts to the home screen, so you can quickly call or send messages to them.

Select  > **Contacts**.

Select a contact that is stored in your phone memory and  > **Add to Home screen**.


Call a contact

On the home screen, select the contact, and press the call key. If the contact has more than one number, select the desired number.

Send a message to a contact

On the home screen, select the contact and **Message**.


Remove a contact from the home screen


On the home screen, select and hold the contact, and select .

The contact is removed from the home screen, but remains in your contacts list.

Set a ringtone for a contact


Want to be able to hear that a particular person is calling you? You can set a ringtone specifically for that person.


Select  > **Contacts**.

- 1 Select a contact and .
- 2 Select **Ringtone** and a ringtone.

Add a picture for a contact

Want to see quickly who is calling you? Add a picture for a specific contact.

Select  > **Contacts**.


- 1 Select a contact.
- 2 Select  next to the contact's name, and select **Add image**.
- 3 Select a picture from Gallery. You can also take a new picture, and select it.

Change or remove a picture

Select the picture, and from the pop-up menu, select **Change image** or **Remove image**.

Send your contact information using My Card


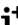
My card is your electronic business card. With My card, you can send your contact information to others.

Select  > **Contacts**.

Send your contact information as a business card


- 1 Select and hold **My card**, and from the pop-up menu, select **Send as contact card**.
- 2 Select the sending method.






Edit your contact information in My Card

- 1 Select **My card**.
- 2 Select  and the detail to edit.
- 3 To add more details, select .

Create a contact group


When you have created contact groups, you can send a message to several people at the same time. For example, you can assign the members of your family to one group.


Select  > **Contacts**.

- 1 Open the  tab, and select  > **New group**.
- 2 Enter a name for the group, and select **OK**.
- 3 On the  tab, select the group and  > **Add members**.
- 4 Mark the contacts to add to the group, and select .

Send a message to a group of people


Would you like to send a message to all your family members quickly? If you have assigned them to a group, you can send a message to all of them at the same time.

Select  > **Contacts**.

- 1 Open the  tab.
- 2 Select and hold a group title, and from the pop-up menu, select **Create message**.

Copy contacts from the SIM card to your phone


If you have contacts stored on your SIM card, you can copy them to your phone. You can add more details to contacts that are stored on your phone, such as alternative phone numbers, addresses, or a picture.

Select  > **Contacts**.

Select  > **SIM numbers** > **Copy all to phone**.

Back up your contacts to Nokia services

If you back up your contacts to Nokia services, you can easily copy your contacts to a new phone. If your phone is stolen or damaged, you can still access your contacts list online.

Select  > **Contacts**.

Select  > **Nokia Sync** > **Sync now**.

If you allow automatic syncing, all the changes you make in the contacts list are automatically backed up to Nokia services.


You need a Nokia account to use Nokia services. You are asked to create an account, if you access a Nokia service using your phone.

If you use Nokia Sync to automatically sync your contacts, do not allow contact syncing with any other service as there may be conflicts. Nokia Sync for contacts is not available if you sync contacts in Mail for Exchange.

Messaging

About Messaging



Select  > Messaging.


You can send and receive various kinds of messages:







- Text messages
- Audio messages
- Multimedia messages that contain pictures and videos
- Group messages

Messaging requires network support.

Send a message

With text and multimedia messages, you can quickly contact your friends and family. In a multimedia message, you can attach pictures, videos, and sound clips that you want to share.


Select  > Messaging.

- 1 Select .
- 2 To add the recipient's phone number manually, enter the number in the To field, and select .
- To select recipients from the contacts list, select  > Add recipient.
- 3 Select the text input field, write your message, and select .
- 4 To add an attachment, select .
- 5 Select .

Sending a message with an attachment may be more expensive than sending a normal text message. For more information, contact your service provider.

You can send text messages that are longer than the character limit for a single message. Longer messages are sent as two or more messages. Your service provider may charge accordingly.

Characters with accents, other marks, or some language options, take more space, limiting the number of characters that can be sent in a single message.


If a text message is very long, it may be converted to a multimedia message to enable delivery to the recipient. To deactivate this feature, when writing the message, select  > **Sending options** > **Message type** > **Text**.

If you send a text message to one or more recipients, and the contact information of one of the recipients is a mail address instead of a phone number, the text message is converted to a multimedia message.

If the item you insert in a multimedia message is too large for the network, the device may automatically reduce the size.

Only compatible devices can receive and display multimedia messages. Messages may look different in different devices.


Send a message to a contact









Select  > **Contacts**.

- 1 Select and hold a contact, and from the pop-up, select **Send message**.
- 2 If the contact has more than one phone number, select the desired number.

Send an audio message

You can record a sound clip, such as a birthday song, and send it to your friend as an audio message.

Select  > **Messaging**.

- 1 Select .
- 2 To add an existing sound clip as an attachment, select  >  and the sound clip. To add a new sound clip, select  > , and record the new clip.
- 3 To add the recipient's phone number manually, enter the number in the To field, and select .
- To select recipients from the contacts list, select  > **Add recipient**.
- 4 Select .




Read a received message

When someone sends you a message, a notification is shown on the home screen. You can open the message directly from the home screen.

Select **Show** to open the message.




Messages are combined into conversations, containing all the messages to and from a contact in a single view. To read a conversation, select it from the list in the Conversations view.

Reply to the message

- 1 With the message open, select .
- 2 Write your reply, then select  > .

Tip: To reply to a message when in the Conversations view, select **Tap to write**.


Forward the message

- 1 With the message open, select  > **Forward**.
- 2 To add a contact as a recipient, select **To**. You can also type in a phone number.
- 3 Edit the message if needed, then select  > .

Save an attached photo or other file


- 1 In the conversation, select the message containing the file.
- 2 Select and hold the file, then select **Save** and a memory. Files are saved to their respective apps, such as Gallery.

Read the message later

- 1 Select  > **Messaging**.
- 2 Select the conversation containing the message.
- 3 Select the message.




View a conversation

You can see the messages you have sent to and received from a particular contact in a single view, and continue the conversation from that view.

Select  > **Messaging**.

Select a contact from the Conversations list. The conversation opens, and all messages sent to and received from that contact are displayed.

Reply to a message in a conversation

- 1 Select the text input field, and write your message.
- 2 To add an attachment, select .
- 3 To add more recipients, select  > **Add recipient**.
- 4 To send the message, select .



The message is sent to the number last used for the contact.


When you send a new message, it is added to the current conversation. If no conversation exists, a new conversation is started.

When you open a received message from the home screen, by default, the message opens in the Conversation view for a particular contact.

Listen to a text message

You can set your phone to read your text messages aloud.


- 1 Select  > **Messaging**.
- 2 Select  > **View folders** > **Inbox**.
- 3 Select and hold a message, then select **Listen**.

To change the speech settings of the message reader, select  > **Settings** > **Phone** > **Speech**.

Change the language


Select **Language** and a language.

Change the voice

Select **Voice** and a voice. To preview a voice, open the voice selection tab , select and hold the voice, then select **Play voice**.

Change the writing language

You can change the language in which you write your messages and mails.

- 1 Select  > **Settings** and **Phone** > **Language**.
- 2 Select **Writing language**.

Mail

About Mail

 Select  > **Mail**.

You can automatically transfer mail from your existing mail address to your phone, and read, respond to, and organise your mail on the go. You can add several mailboxes to your phone and access them directly from your home screen.

Sending or receiving mail on your phone may be chargeable. For information on possible costs, contact your service provider.

Mail is a network service, and may not be available in all regions.

Nokia Mail**About Nokia Mail**

With Nokia Mail, you can easily access your mail using your phone or computer.

You can create your Nokia Mail mailbox on your phone or computer. To create your mailbox on your computer, go to www.nokia.com/support.

You can access your mailbox using your Nokia account sign in details.

Create your Nokia Mail mailbox

Select  > Mail.

If you have a Nokia account, you can access your mailbox using your Nokia account sign in details. If you are a new Nokia Mail user, you are asked to create a Nokia account.

If you have an existing Ovi account, you can continue to use it for signing in as well as for sending and receiving mails.

When you start using your phone for the first time, you are guided through the setup of Nokia Mail. You can also set up your mailbox later.

Add your mailbox manually

Select **New mailbox** > **Nokia Mail**, then register to create your own Nokia Mail address.

To start using the service, you need to accept the service terms and privacy policy.

About Exchange ActiveSync

 Select  > Mail and **New mailbox** > **Exchange ActiveSync**.

Would you like to have your work mail, contacts, and calendar at hand, whether you are sitting by your computer or on the go with your phone? You can synchronise the important content between your phone and a Mail for Exchange server.

Mail for Exchange can be set up only if your company has a Microsoft Exchange server. In addition, your company IT administrator must have activated Microsoft Exchange ActiveSync for your account.

This device is able to communicate with Microsoft Exchange ActiveSync enabled servers. The provision of this device to you does not grant you, and you do not receive, any rights under any Microsoft intellectual property with respect to any server software, or server device, that is accessed using this device or with respect to use of Microsoft Exchange ActiveSync apart from this device.

Before starting to set up Mail for Exchange, make sure you have the following:

- A corporate mail address
- Your Exchange server name (contact your company IT department)
- Your network domain name (contact your company IT department)
- Your office network password

Depending on the Exchange server configuration, you may need to enter additional information. If you do not know the correct information, contact your company IT department.

With Mail for Exchange, the use of the phone lock code may be mandatory.

Synchronisation takes place automatically in intervals defined when setting up the Mail for Exchange account. Only content defined when setting up the account is synchronised. To synchronise additional content, modify the Mail for Exchange settings.

Add a mailbox

Do you use more than one mail address? You can have several mailboxes in your phone. Mail is a network service.

Select  > Mail.

When you open the Mail app for the first time, your phone asks you to create a mailbox. If you accept, follow the instructions shown on the phone.

If you want to use your business mail with your phone, set up the mail using Exchange ActiveSync. For the setup, you need the name of your Microsoft Exchange Server and network domain. For more info, contact your Mail for Exchange administrator.

Add a mailbox later

You can also create a mailbox later. Select **Mail** > **New mailbox**, then follow the instructions shown on the phone.

Tip: If you add a mail widget to your home screen, you can easily access your mail directly from the home screen.

Delete a mailbox

Select and hold the mailbox, then select **Delete mailbox**.

Read a received mail

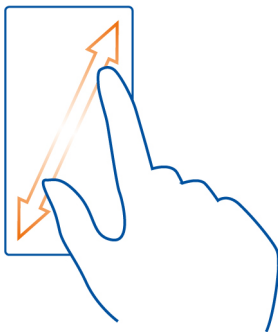
You can use your phone to read and reply to mail.

Select  > **Mail**.

Select the mailbox and the mail.

Tip: To quickly read new mail, add a mail widget to your home screen.





Tip: To zoom in or out, place two fingers on the screen, then slide them together or apart.








Open or save an attachment

Select the attachment and **Open** or **Save**. If there is more than one attachment, you can save them all at once.

Reply to the mail

- 1 Select  > .
- 2 Write your reply, then select .
- 3 Select .

Forward the mail

- 1 Select  > .
- 2 Write the mail address. To add a recipient from your contacts list, select .
- 3 Edit the message, if you want, then select .
- 4 Select .

Tip: If your mail contains a web address and you would like to open the address in the phone browser, select the address.






Read the next or previous mail in the mailbox

Use the arrow icons.


Send a mail

Would you like to send a mail while on the go? With your phone, you can read and send mail, even when not sitting at your desk.

Select  > **Mail** and a mailbox.

- 1 Select .
- 2 Write the mail address. To add a recipient from your contacts list, select . To add a Bcc field, select  >  > **Other recipient fields** > **Show Bcc field**.
- 3 Write the subject and your message, then select .

Tip: To add an attachment, select .




- 4 Select .

Respond to a meeting request

You can open and save or accept meeting requests. When you save or accept a meeting request, it appears in your calendar.

Meeting requests are handled in the Exchange ActiveSync mailbox.

Select  > **Mail** and the Exchange ActiveSync mailbox.

Open the meeting request, and save it to your calendar or, if available, select  **Accept**,  **Decline**, or  **Tentative**.

Check your availability


Select  > **View calendar**.

To edit, reply, or forward an accepted meeting request, open the request in your calendar.

The available options may vary.

Open mail from the home screen


You can have several mail widgets on your home screen, depending on your phone.

Each mail widget contains one mailbox, showing the three latest received mails. You can open the mails directly from the widget.  means that new mail has arrived.

Tip: To see more mails, scroll down.

Add a mail widget to the home screen

On the home screen, tap and hold an empty area, then select **Add widget** and the mail widget. If you have more than one mailbox, select which one to use.

Tip: For a more compact widget, showing only the mailbox name and  when new mail has arrived, select **Add widget > Mail, new arrival**.

Internet

About the web browser

 Select  > Web.

Catch up on the news, and visit your favourite websites. You can use your phone web browser to view web pages on the internet.


To browse the web, you must be connected to the internet.

Browse the web

Select  > Web.

Tip: If you don't have a flat-rate data plan from your network service provider, to save data costs in your phone bill, you can use a Wi-Fi network to connect to the internet.

Go to a website

Write a web address in the address bar, then select .

Search the internet

Write your search word in the address bar, then select the search word below the address bar.

Zoom in or out

Place two fingers on the screen, then slide your fingers together or apart.


Send a web link

Tap and hold a web page, then select **Send** and how you want to send the link.

Open a new browser window

Select  > .

Switch between browser windows

- 1 Select .
- 2 Swipe left or right, then select a window.

A cache is a memory location that is used to store data temporarily. If you have, or have tried to, access confidential information or a secure service, requiring passwords, clear the cache after each use.

Empty the cache

Select  > **Settings** > **Privacy** > **Clear privacy data** > **Cache**.



Add a bookmark

If you visit the same websites all the time, add them to your bookmarks, so you can easily access them.

Select  > **Web**.

While browsing, tap and hold the web page, then select **Add bookmark**.

Go to a bookmarked website while browsing

Select  >  and a bookmark.

Tip: You can also add bookmarks to the main menu of your phone. While browsing, tap and hold the web page, then select **Install as application**.

Subscribe to a web feed

You don't have to visit your favourite websites regularly to keep up with what's new on them. You can subscribe to web feeds and get links to latest content automatically.

Select  > **Web**.

Web feeds on web pages are usually marked with . They are used to share, for example, the latest news headlines or blog entries.

- 1 Go to a blog or web page that contains a web feed.
- 2 Tap and hold the web page, then select **Add feed**.

Update a feed

In the Web feeds view, select and hold the feed, then select **Refresh**.

Set a feed to automatically update

In the Web feeds view, select and hold the feed, then select **Edit** > **Automatic updates**.


Allow a website to use your location info

Select  > **Web**.

Websites may ask to access your current location info to, for example, personalise the info they show you. If you allow a website to use your location info, your location may be visible to others, depending on the website. Read the privacy policy of the website.

If asked, select **Allow once** or **Always allow**.


Remove access to location info from a website

- 1 Select  > **Settings** > **Privacy** > **Location permissions**.
- 2 Tap and hold a website, then select **Delete**.

Remove access to location info from all websites

Select  > **Settings** > **Privacy** > **Clear privacy data** > **Location permissions**.

Social networks**About Social**

Select  > **Social**, then sign in to the social networking services that you use.

To power up your social networking experience, use the Social app. When signed in to social networking services, such as Facebook or Twitter, through the Social app, you can do the following:

- See your friends' status updates from multiple services in one view
- Post your own status update to multiple services at the same time
- Share photos you take with the camera
- Share videos you record with your phone
- Link your online friends' profiles to their contact info in your phone
- Add your location info to your status update
- Add events from the service calendar to your phone calendar




Only those features that are supported by the social networking service are available.

Using social networking services requires network support. This may involve the transmission of large amounts of data and related data traffic costs. For information about data transmission charges, contact your network service provider.

The social networking services are third party services and not provided by Nokia. Check the privacy settings of the social networking service you are using as you may share information with a large group of people. The terms of use of the social networking service apply to sharing information on that service. Familiarise yourself with the terms of use and the privacy practices of that service.

See your friends' status updates in one view



When you are signed in to social networking services through the Social app, you can see your friends' status updates from all those services in a single view. You do not have to switch between different apps to see what everyone is up to.

- 1 Select  > **Social**.
- 2 Select a service, then sign in.
- 3 Select  > **My Accounts** > **Add social network**.
- 4 Select another service, then sign in.
- 5 Select  > **All Activity**.

All the feeds from the services you have added are automatically included in the view.


Post your status to social networking services

With the Social app, you can post your status update to social networking services.

- 1 Select  > **Social**, then sign in to the social networking services that you use.
- 2 Select  > **All Activity**.
- 3 Write your status update in the text field.

Link your online friends to your contacts list

You can link your online friends' profiles from social networking services to their contact info in your phone. After linking, you can view their contact info directly from the Social app, and see their latest status updates in your contacts list.

- 1 Select  > **Social**.
- 2 Select an online friend's profile picture and **Link Profile to Contact**.
- 3 From your contacts list, select the contact to which to link the profile.

See your friends' status updates on the home screen

With the Social widget, you can see your online friends' status updates directly on the home screen when you're signed in to social networking services, such as Facebook or Twitter, through the Social app.

Add the Social widget to the home screen




Select and hold an empty area on the home screen, then select **Add widget > Social**.

Open the Social app from the home screen


On the home screen, select the Social widget. If you're signed in, the status updates view opens. If you're not signed in, the sign-in view opens.

Upload a photo or video to a service

Use the Social app to upload your photos or videos to social networking services, such as Facebook.

- 1 Select  > **Social**, then sign in to a social networking service.
- 2 Select .
- 3 Select whether to upload a photo or video.
- 4 To mark the items to upload, select the items.
The maximum file size is 4 MB for photos and 10 MB for videos.
- 5 If uploading a single photo, you can add a caption and a tag with a comment to a particular section of the photo.
To upload a video, the feature needs to be supported by the social networking service, and you need to use a Wi-Fi connection.
- 6 Select .

Take a photo and upload it

- 1 Select .
- 2 Select the option for uploading a photo from the camera.
- 3 Take a photo.
- 4 Add a caption and a tag with a comment to a particular section of the photo.


Share your location in your status update

With the Social app, you can let your friends know where you are, so they can find you.

- 1 Select  > **Social**.
- 2 Select the text input field at the top of the view.

- 3 Add your location. The phone uses GPS to determine your current location, and searches for landmarks near you.
- 4 If several landmarks are found, select one from the list.


Location sharing is available only if it is supported by the service.

 **Important:** Before sharing your location, always consider carefully with whom you are sharing. Check the privacy settings of the social networking service you are using, as you might share your location with a large group of people.

The applicable terms of use of the social networking service may apply to sharing your location to the service. Familiarise yourself with the terms of use and the privacy practices of the service, and use appropriate consideration before disclosing your location data to others or viewing the location of others.

Contact a friend from a social networking service

When commenting your friend's status is not enough, you can call or send a message to the friend.


- 1 Select  > **Social**.
- 2 Select a friend's profile picture, then select the communication method.

This feature is available if you have linked your online friends to their contact info in your phone, or if your friends have added their own contact info to their details in the service.

The available communication methods vary. To call or send a text message to a friend, the feature needs to be supported by the service.

Add an event to your phone calendar

When responding to invitations to events in a social networking service, such as Facebook, you can add the events to your phone calendar, so you can view upcoming events even if you are not online.

Select  > **Social** and a service, and sign in.

- 1 Select an invitation to an event.
- 2 Add the event to your phone calendar.

This feature is available only if supported by the service.

Camera

About the camera



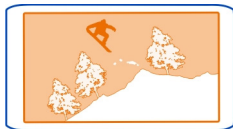
To open the camera, press the camera key.

Why carry a separate camera if your phone has all you need for capturing memories? With your phone camera, you can easily take photos or record videos.

You can later use your phone to view or edit the photos and videos, share them on the internet, or send them to compatible devices.

Take a photo

To open the camera, press the camera key.



Your phone has a full focus camera. With the camera, you can take photos where objects both in the foreground and background are in focus.

Press the camera key. Do not move the phone before the photo is saved and the final photo shown.

Zoom in or out

Use the volume keys.

The face tracker detects faces, draws rectangles around them, and optimises the white balance and exposure. Face tracking is on by default.

Switch face tracking off

Select ●●● > [1].

If there is a memory card inserted in the phone, you can set where to save the photos.

Set where to save photos

- 1 Select [1] > Settings.
- 2 Select Application settings > Camera > Image.
- 3 Select Memory in use and where you want to save your photos.

Save location info to your photos and videos

If you'd like to remember where you were when you took a particular photo or recorded a video, you can set your phone to automatically record the location.

Press the camera key.

Location information can be attached to a photo or video, if your location can be determined using GPS or network methods. If you share a photo or video that contains location information, the location information may be visible to those who view the photo or video. You can deactivate geotagging in the camera settings.

Switch location recording on


Select  >  > Save location info > Yes.


It may take several minutes to obtain the coordinates of your location.

The availability and quality of GPS signals may be affected by your location, satellite positions, buildings, natural obstacles, weather conditions, and adjustments to GPS satellites made by the United States government. GPS signals may not be available inside buildings or underground.

Do not use GPS for precise location measurement, and never rely solely on the location information provided by GPS and cellular networks.

Location info indicators:

 — Location info is unavailable. Location info may not be saved to photos or videos.

 — Location info is available. Location info is saved to photos or videos.

Take a photo in the dark

To take photos even in dim light, switch to night mode.

To open the camera, press the camera key.

Switch to night mode





Select **A** > **C**. To use the flash, select .

Photo and video tips

To open the camera, press the camera key.

When taking a photo:

- Use both hands to keep the camera steady.
- When you zoom in, the photo quality may degrade.

- You can add a photo to a contact in your contacts list. After taking a photo, select  > **Use image** > **Assign to contact**. Move the frame to crop the photo, tap the screen to show the toolbar, select , then select the contact and .
- If you don't use the camera for about a minute, it goes to sleep. To wake the camera up, press the camera key briefly.

Keep a safe distance when using the flash. Do not use the flash on people or animals at close range. Do not cover the flash while taking a photo.

When recording a video:

- For best results, close any open applications before recording.
- Record to your phone mass memory, if possible.
- If recording videos to a memory card, for best performance, use a compatible, fast, high-quality microSD card. The recommended microSD card class is 4 (32 Mbit/s (4 MB/s)) or higher.



Before first use, back up any important data on the card, and use the phone to format the card, even if the card has previously been formatted or used in a Nokia phone. Formatting deletes everything on the card.

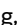

If the performance of the memory card degrades over time, back up any important content on the card, and use the phone to format the card.

Record a video

Besides taking photos with your phone, you can also capture your special moments as videos.

To open the camera, press the camera key.



- 1 To switch from photo mode to video mode, if necessary, select .
- 2 To start recording, press the camera key.
- 3 To pause recording, select . If you pause recording and do not press any key within five minutes, the recording stops.
To zoom in or out, use the volume keys.
- 4 To stop recording, press the camera key. The video is automatically saved in Gallery.

Tip: You can send your video in a multimedia message. To limit the video size for sending, before recording, select  >  > **Video quality**, then select a small enough size, such as Sharing quality.


Send a photo or video

A picture can say more than words. Send a photo or video of that special moment or important info you need to get across in a multimedia or mail message, or using Bluetooth.

Send in a multimedia or mail message

- 1 Take a photo or record a video.
- 2 Select  > **Send**.
- 3 Select **Via message** or **Via mail**.
- 4 To add a contact as a recipient, select **To**. You can also write the recipient's name, phone number, or address in the **To** field.
- 5 Select .


Send using Bluetooth

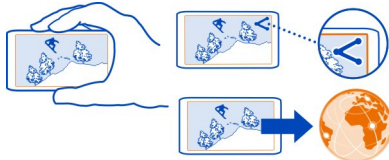
- 1 Take a photo or record a video.
- 2 Select  > **Send** > **Via Bluetooth**.
- 3 Select the phone or device to connect to, or search for more devices.
If the other phone or device requires a passcode, type in the passcode.

Share a photo or video directly from the camera

Want to share your photo or video with your friends? Upload it to a social networking service.

To open the camera, press the camera key.

After taking a photo or recording a video, select , then follow the instructions shown on the phone.



The first time you upload a photo or video to a social networking service, you need to sign in to the service. The service is then added to the list of sharing services on your phone.

Not all social networking services support all file formats or videos recorded in high quality.

Tip: You can also share your photos and videos with another phone that supports NFC. To share, after taking a photo or recording a video, touch the other phone with the NFC area.

Your photos and videos

Gallery

About Gallery



Select  > Gallery.

Watch the videos you have recorded, or browse and view the photos you have taken.

You can also view the photos and videos on a compatible TV. To keep a hard copy, print out your best shots.

To make it easier to find your photos and videos, organise them into albums.

View photos and videos

Select  > Gallery.

Browse photos

Swipe up or down.

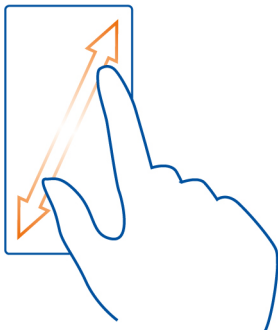
View a photo

Select the photo.

To view the following photo, swipe from right to left. To view the previous photo, swipe from left to right.

Zoom in

Place two fingers on the screen, then slide your fingers apart. To zoom out, slide your fingers together.



Tip: To quickly zoom in or zoom back out, double-tap the screen.


View the toolbar

Tap the screen.


View photos as a slide show

Select a photo and  > **Slide show** > **Play**. The slide show starts from the selected photo.

View the photos in an album as a slide show

Open the Albums  tab. Select and hold the album, then select **Slide show**.

Change slide show settings


Select a photo and  > **Slide show** > **Settings**.

Play a video

Select the video and .

Photos and videos can be sent to you in a mail or multimedia message. To later view these photos and videos, save them to Gallery.

Save a photo or video to Gallery

- 1 In the multimedia message, select the photo or video.
- 2 Tap the screen, then select  > **Save**.

Organise your photos

Do you have a lot of photos on your phone and would like to make it easier to find the one you're looking for? You can organise your photos into albums.

Select  > **Gallery**.

Create a new album

Open the Albums  tab, then select . Write a name for the album.

Move a photo to an album

- 1 Select and hold the photo, then select **Add to album**.
- 2 Select the album to move the photo to. To create a new album for the photo, select **New album**.

Tip: To move several photos to an album, select and hold a photo, then select **Mark**. Mark the photos, select and hold one of the marked ones, then select **Add to album**.



Rename or delete an album



Select and hold the album, then select **Rename** or **Delete**.

The photos and videos in the album are not deleted from your phone.

Share a photo or video from Gallery

Want to upload your photos or videos to a social networking service for your friends and family to see? You can do that directly from Gallery.

- 1 Select  > **Gallery**.
- 2 Select a photo or video to upload.
- 3 Tap the photo or video, then select .
- 4 Add a caption if you like, then follow the instructions shown on the phone.

Tip: To share several items, in the main view, select , mark the items to share, then select .

Tip: You can also share your photos and videos with another Nokia phone that supports NFC. To share, select a photo or video, then touch the NFC area of the other phone with the NFC area of your phone.

Sync your photos and videos between your phone and computer

Did you take photos or record videos with your phone that you'd like to watch on your computer? Using a USB cable, you can easily sync your photos and videos between your phone and a computer.

- 1 Connect your phone to a compatible computer with a compatible USB cable.
If syncing between a memory card in your phone and a computer, make sure the memory card is in your phone.
- 2 Open Nokia Suite on your computer, then follow the instructions shown in Nokia Suite.



Back up your photos

Want to make sure that you will not lose any important photos? You can use Nokia Suite to back up your photos to your computer.

- 1 Connect your phone to a compatible computer with a compatible USB cable.
If copying between a memory card in your phone and a computer, make sure the memory card is in your phone.
- 2 Open Nokia Suite on your computer, then follow the instructions shown in Nokia Suite on how to sync Gallery.

Edit a photo you have taken



 You can add effects, text, clip art, or frames to your photos.

- 1 Select  > **Photo editor** and the photo.
- 2 To add an effect, select an option from the toolbar.
- 3 To save the edited photo, select  > **Save**. The edited photo does not replace the original photo.

To view your edited photos, select  > **Gallery**.

Video editor

About Video editor

 Select  > **Video editor**.

You can combine pictures and videos with sounds, effects, and text, and easily turn them into short movies or slide shows.

The following codecs and file formats are supported: MPEG-4, H.263, H.263 BL, WMV, JPEG, PNG, BMP, GIF, MP3, AAC/AAC+/eAAC+, WAV, and AMR-NB/AMR-WB.







Save the sound files that you want to use in a movie to the Sound files folder on your phone.

You cannot add a DRM protected sound file to a movie.

Create a movie

You can create short movies from your pictures and videos to share with your friends and family.

Select  > **Video editor** and .






- 1 To add videos and pictures to your movie, select . To view the files you have selected, swipe left or right.
- 2 To add transitions between videos and pictures, select .
- 3 To add sounds to play in the background, select .
- 4 To add text or subtitles to your movie, select **Ab**.
- 5 To edit your movie, select . In editing mode, you can cut the length of the video or define how long a picture is displayed.
- 6 To save your movie, select  > **Save video**.
You can re-edit your movie later. To save your project, select  > **Save project**.


To later view your movie, select  > **Gallery**.

Create a slide show

Want to turn your holiday photos into a stylish slide show? With templates for different moods and events, you can create slide shows for anniversaries, parties, or holidays.

Select  > **Video editor** and .

- 1 Select a template to use for the slide show. When you select a template, a preview is shown.
- 2 To add photos to your slide show, select .
- 3 To add sounds to play in the background, select .
- 4 To add a title, select **Ab**.
- 5 To preview your slide show, select  > **Preview**.
- 6 To save your slide show, select  > **Save video** when previewing your slide show.
- 7 You can re-edit your slide show later. To save your project, select  > **Save project**.

To later view your slide show, select  > **Gallery**.

Print a photo you have taken

You can print your photos directly from your phone using a compatible printer.

- 1 Use a compatible USB cable to connect your phone to a printer in Media transfer mode.
- 2 In Gallery, select the photo to print.
- 3 Tap the screen, then select **≡** > **Print**.
- 4 To use the USB connection to print, select **Print** > **Via USB**.
- 5 To print the photo, select **≡** > **Print**.

Tip: When the USB cable is connected, you can change the USB mode. Swipe down from the notification area, then select **ψ**.

View photos and videos on a TV

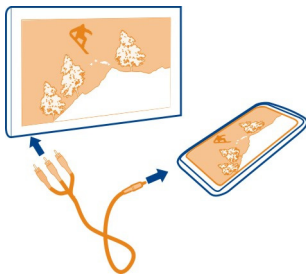
You can view photos and videos on a compatible TV, making it easier for you to show them to your family and friends.

View photos and videos on your standard definition TV

You need to use a Nokia Video Connectivity Cable (available separately), and may need to change the TV-out settings and aspect ratio.

To change the TV-out settings, select **⌘** > **Settings and Phone** > **Accessories** > **TV-Out**.

- 1 Connect a Nokia Video Connectivity Cable to the video input of a compatible TV. The colour of the plugs must match the colour of the sockets.



- 2 Connect the other end of the Nokia Video Connectivity Cable to the Nokia AV connector of your phone. You may need to select **TV-Out cable** as the connection type.
- 3 Select the photo or video on your phone.

Do not connect products that create an output signal, as this may damage the device. Do not connect any voltage source to the Nokia AV connector. If you connect an

external device or headset, other than those approved by Nokia for use with this device, to the Nokia AV connector, pay special attention to volume levels.

Videos and TV

Videos

About Videos



Select  > Videos.



You can browse, download, and watch videos on your phone when out and about.


Tip: Get new videos from Nokia Store. For more information, go to www.nokia.com/support.

Using services or downloading content may cause transfer of large amounts of data, which may result in data traffic costs.

Play a video

Select  > Videos.

To browse your video collection, open the  tab. To browse the videos you have recorded, select  > Gallery.

To download videos from Nokia Store, open the  tab.



Watch a video

Select a video to play. To access the video player controls, tap the screen.

Pause or resume playback

Select  or .

Fast-forward or rewind

Select and hold  or .

If the video is not in the same aspect ratio as the screen of your phone, you can zoom in or stretch the picture, so it fills the screen.

Zoom or stretch the picture

Select  > Change aspect ratio.

Copy your videos between your phone and computer



Have you recorded videos with your phone that you want to watch on your computer? Or do you want to copy your videos from your phone to your computer? Use a compatible USB data cable to copy your videos between your phone and a computer.

- 1 Use a compatible USB data cable to connect your phone to a computer.
If copying between a memory card in your phone and a computer, make sure the memory card is inserted.
- 2 Open Nokia Suite on your computer, and follow the displayed instructions.

Music and audio

Music player




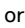
About the music player


 Select  > Music player.

You can use your phone's music player to listen to music and podcasts while on the move.

Play music

Select  > Music player.

- 1 Select , , , or  to view songs, artists, albums, or genres.
- 2 Select a song or album.

Tip: To listen to the songs in a random order, select .

Pause and resume playback

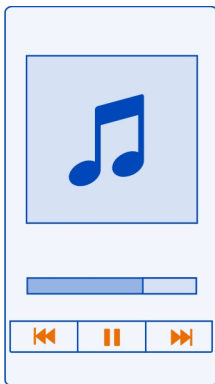
To pause playback, select ; to resume, select .

Fast-forward or rewind a song

Select and hold  or .

Play a song on repeat

Select .



Tip: When listening to music, you can return to the home screen, leaving the music playing in the background.


Create a playlist

Want to listen to different music for different moods? With playlists, you can create selections of songs to play in a specific order.

Select  > **Music player**.

- 1 Select and hold a song, album, or genre, then select **Add to playlist**.
- 2 Select a playlist, or select **New playlist** to create a new one.

Play a playlist

Select  and a playlist.

Remove a song from playlist

In the playlist view, select and hold the song, then select **Remove**.

This does not delete the song from the phone; it only removes it from the playlist.

Tip: Music player automatically creates a playlist for songs that are most played, recently played, never played, and recently added.

View lyrics when listening to a song

To view lyrics during playback, copy the lyrics files into the same folder as the music files. The lyrics file names must match the corresponding music file names.

The music player supports basic and enhanced LRC formats, and also lyrics that are embedded in a song, using the ID3v2 metadata format.

Only use lyrics that have been obtained legally.

Sync music between your phone and PC

Do you have music on your PC that you want to listen on your phone? Nokia Suite is the fastest way to copy music to your phone, and you can use it to manage and sync your music collection.



- 1 Connect your phone to a compatible computer with a compatible USB cable.
- 2 On your phone, swipe down from the notification area, then select **USB > Nokia Suite**.
- 3 On your computer, open Nokia Suite. Make sure you have the latest version of Nokia Suite.
- 4 Drag and drop your music to your phone. For more information, see the Nokia Suite help.
- 5 In Music player, select **≡ > Music library > Refresh**.

Download the latest version of Nokia Suite from www.nokia.com/support.

Some music files can be protected by digital rights management (DRM) and cannot be played on more than one device.

About Nokia Music

 Select  > **Nokia Music**.

With Nokia Music, you can buy and download songs to your phone and your computer. Browse Nokia Music, and discover new music and old favourites.

This service may not be available in all regions or countries, and different services and options are available, depending on your country of residence.

To download music, you need to create a free Nokia account.

You can create a Nokia account, join Nokia Music, and sign in to your account using any of the following:

- Your phone
- A compatible web browser
- Nokia Suite

If you already have a Nokia account, you can use that account for Nokia Music.


If you have any credit or downloads, or you have subscribed to unlimited downloading with your Nokia account, do not close the account. If you do, all these will be lost.

Protected content

Digital rights management (DRM) protected content, such as pictures, videos, or music, comes with an associated licence that defines your rights to use the content. DRM protected songs cannot be used, for example, as ringtones or alarm tones.

You can view the details and status of the licences, and reactivate and remove licences.

Manage digital rights licences

Select  > **Settings** > **Phone** > **Phone management** > **Security settings** > **Protected content**.


Record sounds

Select  > **Recorder**.

Record a sound clip

Select .

Stop recording

Select . The sound clip is automatically saved to the Sound files folder in the Files application.

Send a recorded sound clip as an audio message

Select  > **Send**.

Play music through a radio

About the FM transmitter



Select > **Pl. via Radio.**

You can play music stored in your phone through any compatible FM radio, such as a car radio or a home stereo system.

The operating distance of the FM transmitter is about 2 metres (6 feet). Obstructions, such as walls, other electronic devices, or public radio stations may cause interference to the transmission. The operating frequency of the FM transmitter varies by region.

The FM transmitter may cause interference to nearby FM radios operating on the same frequency. To avoid interference, always search for a free FM frequency on the receiving radio before activating the FM transmitter.

The FM transmitter cannot be used at the same time as the FM radio of your phone.



Note: Using FM transmitter may be restricted in some countries. For more information, contact your local authorities and go to www.nokia.com/fmtransmitter.

Play a song through a radio

Do you want to listen to music at a higher volume, or through better quality hi-fi stereo speakers? You can play music through an FM radio.

- 1 Tune the receiving radio to a free frequency.
- 2 Select > **Music player.**
- 3 Select a song or a playlist.
- 4 Select > **Play via Radio.**
- 5 Enter the frequency to which you tuned the receiving radio. For example, if the frequency 107.8 MHz is free in your area and you tune your FM radio to that frequency, also tune the FM transmitter to 107.8 MHz.

To adjust the volume, use the volume function in the receiving radio. Make sure your phone volume is not muted.


Tip: To easily activate or deactivate the FM transmitter, add the Play via Radio widget to your homescreen.

This application is provided for personal use of legally obtained content only.

FM radio

About the FM radio



Select  > **FM radio**.

You can listen to FM radio stations using your phone. Just plug in a headset, and select a station.

To listen to the radio, you need to connect a compatible headset to the device. The headset acts as an antenna.




It is not possible to listen to the radio through a Bluetooth headset.

You can listen to the radio even when offline mode is activated in your phone and you do not have cellular network coverage. The quality of the radio broadcast depends on the FM radio signal coverage at your location.

You can make or answer a call while listening to the radio. The radio is automatically muted during an active call.



Find and save radio stations

Search for your favourite radio stations, and save them, so you can easily listen to them later.

Select  > **FM radio**.

The first time you use the FM radio, the app automatically searches for available radio stations. If no stations are found, you can set a frequency manually. You can also use the automatic scanning feature later.

Set a frequency manually


- 1 Select  >  > **Tune stations manually**.
- 2 To set the frequency, select the up or down arrows. The supported frequency range is 87.5–108.0 MHz.

Scan for all available stations

Select  > .

Listen to the radio

Enjoy your favourite FM radio stations on the go!

Select  > FM radio.



Go to the next or previous station

Select  or .

View all available stations

Select .


Scan for another available station

Select and hold  or .

Tip: To easily access the radio, add the radio widget to the home screen.


Reorder the list of saved stations

You can reorder the list of saved stations, so that your favourites are at the top.

Select  > FM radio.

The stations you have saved are listed in the Station list view.

Move a station on the list

- 1 From the toolbar, select .
- 2 Select and hold the station title, and from the pop-up menu, select **Move**.
- 3 Select the new place on the list.

Maps**About Maps apps**

Maps shows you what is nearby and guides you where you want to go. Maps also provides you with weather forecasts and links to the latest travel guides.

- Find cities, streets, and services using Maps.
- Sync your favourite locations and routes between your phone and the Nokia Maps web service.
- Find your way with turn-by-turn directions using Drive.

- Get scheduled directions door-to door combining different modes of public transport using Public Transport.
- Check the current weather and a forecast for the coming days, if available, using Weather.
- Get linked to the latest information on what's there to see and do, where to spend the night, or how to book a room using Guides.

Coordinate information may not be available in all regions.

Some services may not be available in all countries, and may be provided only in selected languages. The services may be network dependent. For more information, contact your network service provider.

Using services or downloading content may cause transfer of large amounts of data, which may result in data traffic costs.

Contents of digital maps may sometimes be inaccurate and incomplete. Never rely solely on the content or the service for essential communications, such as in emergencies.

Some content is generated by third parties and not Nokia. The content may be inaccurate and is subject to availability.

Navigate to your destination

Drive to your destination

When you need turn-by-turn directions while driving, Drive helps you get to your destination.

Select  > Drive.



Drive to a destination

Select **Set destination** and an option.

Start driving without a set destination

Select **Just drive**. The map follows your location.

Drive to your home

Select **Drive home**.

When you select **Drive home** for the first time, you are asked to give your home location.

Change your home location

Select  > **Settings** > **Home Location** > **Redefine**.

Obey all local laws. Always keep your hands free to operate the vehicle while driving. Your first consideration while driving should be road safety.

Change the voice guidance language for driving


Voice guidance helps you find your way to a destination, leaving you free to enjoy the journey.

Select  > **Drive**.

Select  > **Settings** > **Voice guidance** and a language.

Voice guidance may not be available for your language.

Switch voice guidance off



Select  > **Settings** > **Voice guidance** > **None**.

Change the look of the Drive view

Would you like to see a more realistic 3D map, or are you using Drive at night, when it's dark? With the different map modes, you can see the info you need clearly at all times.

Select  > **Drive**.

View the map in 3D

Select  > . To go back to 2D mode, select the icon again.



To see the map clearly also when it is dark, you can activate night mode.

Activate night mode

Select  >  > Colours > Night mode.




By default, the map rotates to your driving direction.

Orient the map to north

Select . To rotate the map back to your driving direction, select  again.

Select your preferred route

Drive can choose the route that best suits your needs and preferences.

- 1 Select  > Drive.
- 2 Select  >  > Route settings.
- 3 Select Route selection > Faster route or Shorter route.
- 4 To combine the advantages of both the shorter and the faster routes, select Route selection > Optimised.

You can also choose to allow or avoid using, for example, motorways, toll roads, or ferries.

Get traffic and safety info

Enhance your driving experience with real-time info about traffic events, lane assistance, and speed limit warnings.



Select  > Drive.

Show traffic events on the map

During drive navigation, select  > Traffic. The events are shown as triangles and lines.

You can set your phone to notify you when you exceed the speed limit.

Get speed limit warnings

- 1 Select  >  > Alerts.
- 2 In the Speed limit alert status field, select On.
- 3 To set by how much you can go over the speed limit before being warned, select Speed limit < 80 km/h or Speed limit > 80 km/h.

You can set Drive to avoid traffic events, such as traffic jams or roadworks in route planning and guidance. Drive checks the route regularly during navigation, updating the guidance automatically.

Avoid traffic events

Select  >  > **Route settings** > **Avoid traffic**.

The availability of traffic information may vary according to the region and country.

The location of speed cameras may be shown on your route during navigation, if this feature is enabled. Some jurisdictions prohibit or regulate the use of speed camera location data. Nokia is not responsible for the accuracy, or the consequences of using speed camera location data.

Walk to your destination



When you need directions to follow a route on foot, Maps guides you over squares, and through parks, pedestrian zones, and even shopping centres.

Select  > **Maps**.

- 1 Select a place and its info area at the top of the screen.
- 2 Select **Navigate** > **Walk here**.

By default, the map is oriented to north.

Rotate the map to your walking direction

Select . To rotate the map back to north, select  again.

You can also select what type of route you want walk navigation to follow.

Select the walking mode

- 1 Select  > **Settings** > **Maps & Walk** > **Route settings**.
- 2 Select **Preferred route** > **Streets or Straight line**.



Straight line is useful on off-road terrain as it shows the walking direction.

While walking, you can check the dashboard for info, such as how far you have walked and what your average speed has been.

Check the tripmeter from the dashboard

In the walk navigation view, select  > **Dashboard**.

Reset the tripmeter

Select  > **Reset**. To reset all counters, select  > **Reset all**.

The trip meter may not be accurate, depending on the availability and quality of your GPS connection.

Change the voice guidance language for walking

You can easily change the language for voice guidance, or switch it off completely.

Select  > **Maps**.

Select  > **Settings** > **Maps & Walk** > **Voice guidance** and a language.


Voice guidance may not be available for your language.

Switch voice guidance off

Select  > **Settings** > **Maps & Walk** > **Voice guidance** > **None**.

Find your way using Public Transport

Scheduling your journey using trams, trains, and buses can be hard – why not let your phone do the planning?

- 1 Select  > **Public Transport**.
- 2 Select **Journey planner**.
- 3 If you don't want to start your journey from where you are right now, write your start point in the **From** box, then select from the matches.
- 4 Write your destination in the **To** box, then select from the matches.
- 5 To see earlier or later journeys, drag the screen left or right. Hold your finger in place until the journeys are calculated.
- 6 To see a journey in detail, select the journey.

Tip: In the journey details view, to see the next or previous journey, swipe left or right.

Tip: Need help when walking to the bus stop? To see the stop in Maps, in the journey details view, select the walking section of your journey.

If the needed map data is not stored on your phone, and you have an active data connection to the internet, a map for the area is automatically downloaded.

Planning to set off later in the day? You can set what time you want your journey to start or what time you want to arrive.

Change the time of the journey

Select , then select **Depart** or **Arrive**.

Public transport routing is available for selected regions around the world.


In some areas, timetables are not available, and the journey plans are only estimates. In these areas, you can't see earlier or later journeys, or change the time of the journey.


The Public Transport service is free of charge.

Using services or downloading content may cause transfer of large amounts of data, which may result in data traffic costs.

Find nearby stops and stations

Don't know where the nearest bus stop is? Public Transport finds nearby stops and stations, and checks the next departures for you.

- 1 Select  > **Public Transport and Transport nearby**.
- 2 If you don't want to search for departures from where you are right now, write a start point in the **Search for transport near** box, then select from the matches.
- 3 Select a stop or station.

Tip: To see the nearby stops and stations on a map, after selecting your start point, select .




In some areas, timetables are not available, and the journey plans are only estimates. In these areas, you can't see the departures from the stops and stations.

Find and view locations

See where you are on a map


If you need to get your bearings, check where you are on a map. You can also explore different cities and countries.

Select  > **Maps**.


 shows where you are. When searching for your location,  blinks. If Maps can't find you,  shows your last known location.

If accurate positioning is not possible, a red halo around the location icon shows the general area you might be in. In densely populated areas, the accuracy of the estimate is better, and the red halo is not as wide.

Browse the map

Drag the map with your finger. By default, the map is oriented north. If you want the map to rotate so that it shows the direction you're facing, select .


See your current or last known location

Select .

Zoom in or out


Select **+** or **-**.

Tip: You can also place two fingers on the map, then slide your fingers apart to zoom in or together to zoom out. Not all phones support this feature.

Tip: Want to see your holiday photos on the map? Set your camera to save location info to your photos, and you can see your photos in Maps at the place they were taken. To switch the feature off, select , then clear the **Your photos** check box.

If you browse to an area not covered by the street maps that are stored on your phone, and you are connected to the internet, new street maps are automatically downloaded.

Prevent downloading new street maps automatically

- 1 Select  > **Settings** > **General**.
- 2 Select **Connection** > **Offline**.

Map coverage varies by country and region.

Find a location

Maps helps you find specific locations and businesses.

Select  > **Maps** and .


- 1 Enter search words, such as a street address or place name.
- 2 Select an item from the list of proposed matches.
The location is displayed on the map.

Return to the list of proposed matches

Select .

Tip: In the search view, you can also select from the list of your previous search words.

Search for different types of nearby places

Select  and a category, such as transport, accommodation, or shopping.



Tip: You can use the details page of a found location to easily navigate to the place, to view its contact information, or to save or share the location. Select the place, and the place is shown on the map. To view the details page, select the information area at the top of the screen.

If no search results are found, make sure the spelling of your search words is correct. Problems with your internet connection may also affect results when searching online.

If you have maps of the searched area stored on your phone, to avoid data transfer costs, you can also get search results without an active internet connection, but the search results may be limited.

Download and update maps

Save new street maps to your phone before a journey, so you can browse the maps without an internet connection when travelling.

Select  > **Maps** and  > **Map Loader**.

To download and update maps on your phone, you need an active Wi-Fi connection.

Download new maps

- 1 Select **Add new maps**.
- 2 Select a continent and a country, then select **Download**.

Update maps

Select **Check for updates**.

Remove a map

Select and hold a country, then confirm that you want to remove the map.

Tip: You can also use the Nokia Suite PC app to download the latest street maps and voice guidance files, and copy them to your phone. To download and install Nokia Suite, go to www.nokia.com/support.

When you install a newer version of the Maps app on your phone, the country or region maps are deleted. Before using Nokia Suite to download new maps, open and close the Maps app, and make sure you have the latest version of Nokia Suite installed on your computer.

Change the look of the map

You can change the look of the map so that you can see just the info you need.

Select  > **Maps**.

Show prominent buildings and attractions

Select  > **Landmarks**.

Show public transport routes

Select  > Transit lines.

The available features may vary by region.

Guides

Are you planning a trip or visiting a new city? Want to know what's there to see and do, or where you could spend the night or have dinner? Guides gets you connected to travel guides, booking services, and event listings for the latest detailed information.

Select  > Guides.

Open a service or guide


Select the title.

To return to the main page, select **Guides**.

The service may not be available in your country.

Weather

Is it going to rain in the afternoon? How warm will it be on Saturday? Use Weather to check the current conditions or a forecast for the coming days.

Select  > Weather.

Browse the detailed forecast

To browse forwards or backwards in time, drag the time slider at the bottom of the view.

View a five-day forecast

Select . To go back to the detailed forecast view, select .

The service may not be available in your country.

About positioning methods

Maps shows your location on the map using GPS, A-GPS, Wi-Fi, or network (cell ID) based positioning.

A-GPS and other enhancements to GPS may require transferring small amounts of data over the cellular network.

GPS	The global positioning system (GPS) is a navigation system that uses satellites to work out where you are.
A-GPS	<p>The Assisted GPS (A-GPS) network service retrieves location information using the cellular network, and assists GPS in calculating your current location.</p> <p>Your phone is set up to use the Nokia A-GPS service, unless your network service provider has its own A-GPS settings. To get the assistance data to your phone, you need to be able to connect to the internet. Your phone gets the data from the service only when needed.</p>
Wi-Fi	Wi-Fi positioning improves positioning accuracy when GPS signals are not available, especially when you are indoors or between tall buildings.
Cell ID	With network (cell ID) based positioning, Maps locates you through the cellular system your phone is currently connected to.


The availability and quality of GPS signals may be affected by your location, satellite positions, buildings, natural obstacles, weather conditions, and adjustments to GPS satellites made by the United States government. GPS signals may not be available inside buildings or underground.

Do not use GPS for precise location measurement, and never rely solely on the location information provided by GPS and cellular networks.

Depending on the available positioning methods, the accuracy of positioning may vary from a few metres to several kilometres.

Switch positioning methods off

To save on data costs, especially when abroad, you can switch off assisted GPS (A-GPS), Wi-Fi, or network (cell ID) positioning.

Select  > **Settings**.

Select **Application settings** > **Positioning** > **Positioning methods**, and switch off the positioning methods you don't want to use.



Working out your location may take much longer, the location can be more inaccurate, and the GPS receiver can lose your location more frequently.

Save and share places**Save or view a place**



To aid your travel planning, you can search for places, such as hotels, attractions, or petrol stations, and save them to your phone.

Select  > **Maps**.

Save a place


- 1 To search for an address or place, select .
- 2 Select the place's info area at the top of the screen.
- 3 On the details page, select .

View a saved place

In the main view, select  >  > **Places** and the place.





Group the places into a collection, for example, when planning a trip.

Add a saved place to a collection

- 1 Select **Places**.
- 2 Select and hold the place, then select **Organise collections**.
- 3 Select **New collection** or an existing collection, then select .

Sync your Favourites

Plan a trip on your computer at the Nokia Maps website, sync the saved places with your phone, and access the plan on the go.

- 1 Make sure you're signed in to your Nokia account.
- 2 Select  > **Maps**.
- 3 Select  >  > . If you do not have a Nokia account, you are asked to create one.

Syncing requires an internet connection, and may involve the transmission of large amounts of data through your service provider's network. For info about data transmission charges, contact your network service provider.

To use the Nokia Maps web service, go to maps.nokia.com.

Send a place to a friend

When you want to show your friends where a place is on the map, you can send the place to them.

Select  > **Maps**.

To view the place on the map, your friends don't need to have a Nokia phone, but an internet connection is required.

- 1 Select a place and its information area at the top of the screen.
- 2 Select **Share** > **Share via SMS** or **Share via Email**.

A mail or text message containing a link to the location on the map is sent to your friend.

Report incorrect map information

If you notice that information on the map is incorrect or missing, report it to Nokia.

Select a place from the map, its information area at the top of the screen, and **Report**.

The service may not be available for your country or region. Reporting incorrect or missing information requires an internet connection.

You can report issues, such as:

- Missing or incorrect street names
- Streets that are blocked or unsuitable for walking on
- Incorrect restrictions or speed limits

You can add further details when reporting.

Time management

Clock

About the clock



Select  > **Clock**.

Tip: To open the clock, you can also select the clock on the home screen.

Set and manage alarms, and check local times in different countries and cities.

Set the time and date

On the home screen, select the clock.

Select  > **Settings** > **Time or Date**.

Set an alarm

You can use your phone as an alarm clock.

On the home screen, select the clock.

- 1 Select **+**.
- 2 Set the alarm time, and enter a description.
- 3 To set the alarm to sound, for example, at the same time every day, select **Repeat**.

Remove an alarm

Select and hold the alarm, and from the pop-up menu, select **Delete alarm**.

Snooze an alarm

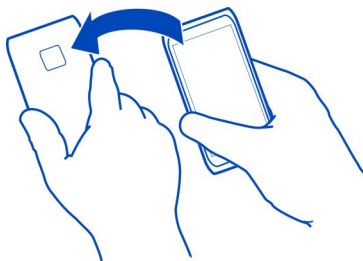
When an alarm sounds, you can snooze the alarm. This pauses the alarm for a defined length of time.

When the alarm sounds, select **Snooze**.

Set the length of the snooze time

- 1 On the home screen, select the clock.
- 2 Select **≡** > **Settings** > **Alarm snooze time**, and set the length of time.

Tip: You can snooze alarms also by turning your phone face down.



Update the time and date automatically

You can set your phone to update the time, date, and time zone automatically. Automatic update is a network service.

On the home screen, select the clock.

Select **≡** > **Settings** > **Automatic time update** > **On**.

Change the time zone when travelling

You can set the clock to the local time when travelling abroad or view the time in different locations.

On the home screen, select the clock.

Open the world clock tab .

Add a location

Select **+** and a location. You can add up to 15 locations. For countries with multiple time zones, you can add several locations.

Set your current location

Select and hold a location, and from the pop-up menu, select **Set as current location**.

The time in your phone is changed according to the selected location. Make sure the time is correct.

Tip: Want to remove a location quickly? Select and hold the location, and from the pop-up menu, select **Remove**.

Check the time in different cities

To view the time in different locations, add them to your world clock tab. You can also add pictures for the locations, for example, a picture of your friend who lives in the city in question, or a view from your favourite tourist attraction.

On the home screen, select the clock.

Open the world clock tab .

Add a location

Select **+** and a location. You can add up to 15 locations. For countries with multiple time zones, you can add several locations.

Add a picture for a location

Select and hold the location, and from the pop-up menu, select **Change image** and a picture.

Calendar

About the calendar


 Select  > Calendar.

With your phone calendar, you can keep your schedules organised.

Tip: Want quick access to your calendar? Add a calendar widget to the home screen.

View your schedule for the week

You can browse your calendar events in different views. To easily check all the events for a particular week, use the week view.


Select  > **Calendar**.


Select the number of the desired week.

Tip: To increase or decrease the size of the viewable area, place two fingers on the screen, and slide them apart or together.

Browse your calendar in different views


Want to see all your calendar events for a particular day? You can browse your calendar events in different views.



Select  > **Calendar**.

Select  and the desired view.

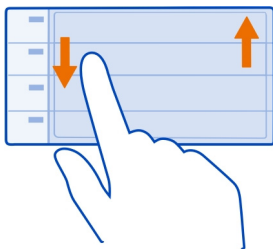
Tip: To go to the previous or next day, week, or month, in the appropriate view, swipe left or right.

Add a calendar event

Select  > **Calendar**.


- 1 Select (**Tap to create event**), or if there are existing events, tap the area below an event. The calendar event type is meeting by default.
- 2 Fill in the fields.
- 3 To repeat the calendar event at regular intervals, select  and the time interval. Select **Repeat until**, and enter the end date.
- 4 Select .

Tip: You can also add a calendar event in the day view. Select and hold the starting time, and drag the arrows to set the duration.






Use separate calendars for work and free time


You can have more than one calendar. Create one for work and another for your free time.

Select  > Calendar.

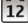

Create a new calendar

- 1 Select  > Calendars > .
- 2 Enter a name, and set a colour code for the calendar.
- 3 Define the visibility for the calendar. When a calendar is hidden, the calendar events and reminders are not displayed in different calendar views or on the home screen.
- 4 Select .

Modify the settings for a calendar

- 1 In the Calendars view, select the desired calendar.
- 2 Change the name, colour, and visibility.
- 3 Select .


Add an entry to a particular calendar




- 1 When adding a calendar event, select  and the calendar.
- 2 Fill in the fields, and select .

Colour codes indicate which calendar an event belongs to.

Add a task to your to-do list


Do you have important tasks to handle at work, library books to return, or maybe an event you want to attend? You can add tasks (to-do notes) to your calendar. If you have a particular deadline, set a reminder.



Select  > **Calendar**.

- 1 Select **(Tap to create event)**, or if there are existing events, tap the area below an event.
- 2 Select the event type field , and select **To-do** as the event type.
- 3 Fill in the fields.
- 4 To add a reminder for the task, select .
- 5 Select .

Remember a birthday


You can add a reminder for birthdays and other special dates. The reminders are repeated annually.

Select  > **Calendar**.



- 1 Select **(Tap to create event)**, or if there are existing events, tap the area below an event.
- 2 Select the event type field , and select **Anniversary** as the event type.
- 3 Fill in the fields, and select .

Send a meeting request

You can create meeting requests, and send them to the participants.


Select  > **Calendar**.



Before you can create and send a new meeting request, you need to set up a mailbox.

- 1 Open an event, and select  > **Send** > **Via mail**.
- 2 Add the meeting participants as recipients of the request mail.
- 3 To send the request, select .

Add the location to a calendar event

Do you have an appointment in a place you have never visited? You can add the location information to your calendar event.

Select  > **Calendar**.


- 1 Select **(Tap to create event)**, or if there are existing events, tap the area below an event.
- 2 Select  **Enter location**, and select the location in the Maps application. You can also manually enter the location in the text field.
- 3 Select .

Office

Quickoffice

About Quickoffice



Select  > Quickoffice.

Quickoffice consists of the following:


- Quickword for viewing Microsoft Word documents
- Quicksheet for viewing Microsoft Excel worksheets
- Quickpoint for viewing Microsoft PowerPoint presentations

To buy the editor version of Quickoffice, select **Updates and upgrades**.

The office applications support common features of Microsoft Word, PowerPoint, and Excel (Microsoft Office 2000, XP, and 2003). Not all file formats are supported.

Read Microsoft Word, Excel, and PowerPoint documents

You can view Microsoft Office documents, such as Word documents, Excel worksheets, or PowerPoint presentations.

Select  > Quickoffice.

Open a file

Select **Browse files** and the memory where the file is stored, browse to the correct folder, and select the file.

Sort files

Select  > Sort by.

Read PDF documents




Select  > Adobe Reader.

Open a file

Select **Browse files** and the memory where the file is stored. Browse to the correct folder, and select the file.

Use the calculator



Select  > Calculator.

- 1 Enter the first number of the calculation.
- 2 Select a function, such as add or subtract.
- 3 Enter the second number of the calculation.
- 4 Select =.

Save or retrieve the result of a calculation


Select  > **Memory** > **Save or Recall**.

Write a note




Notes on paper are easy to lose. Instead of writing them down, you can save your notes and lists on your phone, so you always have them with you. You can also send your notes to friends and family.

Select  > **Notes**.

- 1 Select **Create note**.
- 2 Write your note in the note field and select .


Send a note


Open the note, and select  > **Send** and the sending method.

Translate words



You can translate words from one language to another.


Select  > **Dictionary**.

- 1 Write a word in the search field. Suggestions of words to translate are shown.
- 2 Select the word from the list.
- 3 To listen to the pronunciation, select  > **Listen**

Change the source or target language

Select  > **Languages** > **Source or Target**.

Download more languages from the internet

Select  > **Languages** > **Download languages**.

English is preinstalled, and you can add two additional languages. Not all languages may be supported.

Open or create zip files




You can open and extract files from zip files. You can also create new zip files, to store and compress files.

Select  > Zip.

Chat with your colleagues



With Microsoft® Communicator Mobile, you can communicate and collaborate with your colleagues in the office and around the world.

- 1 Select  > **Communicator**.
- 2 Define the settings.

Microsoft® Communicator Mobile is provided for use with validly licensed copies of Microsoft Office Communications server 2007 R2 and Lync 2010. If you do not have a valid license for Microsoft Office Communications server 2007 R2 or Lync 2010, you may not use this software.

Some services may not be available in all countries, and may be provided only in selected languages. The services may be network dependent. For more info, contact your network service provider.

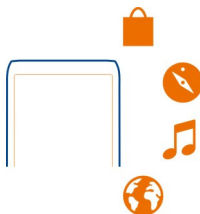
Using services or downloading content may cause transfer of large amounts of data, which may result in data traffic costs.

Phone management

Keep your phone software and applications up to date

About phone software and app updates

Stay in step with the beat – update your phone software and apps to get new and enhanced features for your phone. Updating the software may also improve your phone performance.



It is recommended that you back up your personal data before updating your phone software.

Warning:


If you install a software update, you cannot use the device, even to make emergency calls, until the installation is completed and the device is restarted.


Using services or downloading content may cause transfer of large amounts of data, which may result in data traffic costs.

Before starting the update, connect a charger or make sure the device battery has enough power.

After the update, the instructions in the user guide may no longer be up to date. You may find the updated user guide at www.nokia.com/support.

Update phone software and apps using your phone

 You can check for updates for your phone software or apps, and download and install them to your phone wirelessly (network service). You can also set your phone to automatically check for updates and notify you when important or recommended updates are available.

Select  > **SW update**.

You may need to restart your phone to finish the update.


View update details

Select and hold an update.

Install all updates

Select .

Select which updates to install

Select  > **Mark updates** and the updates you want to install. All updates are selected by default.

Set your phone to automatically check for updates

Select  > **Settings** > **Auto-check for updates**.

Update phone software using your PC

You can use the Nokia Suite PC app to update your phone software. You need a compatible PC, a high-speed internet connection, and a compatible USB cable to connect your phone to the PC.

To get more info and to download the Nokia Suite app, go to www.nokia.com/support.

Manage files

About the file manager



Select > Files.

You can browse, manage, and open files on your phone. You can also view and manage files on a compatible inserted memory card.

View the files stored in your phone

Select > Files and the desired memory.

The files and folders at the top level of that memory location are displayed.

View the contents of a folder

Select the folder.

Organise files

You can create new folders, to help organise your files. This can make it easier to back up or upload your content. Within folders, you can copy, move, or delete files and subfolders.

Select > Files.

Create a new folder

In the folder where you want to create a subfolder, select > New folder.

Copy a file to a folder


Select and hold the file, and from the pop-up menu, select the appropriate option.

Delete a file from a folder

Select and hold the file, and from the pop-up menu, select the appropriate option.


Copy, move, or delete several files at the same time

- 1 Select > Mark multiple items.
- 2 Select the files.

3 Select  and the appropriate option.

Back up files

Want to make sure that you will not lose any important files? You can create backups of the phone memory.

Select  > **Files and Backup and restore**.

It is recommended that you back up the phone memory regularly.


Tip: Use Nokia Suite to back up your content to a compatible computer. If your phone is stolen or damaged, you still have all your important files available.



Format the mass memory

Want to delete all content from your phone mass memory? You can format the mass memory.

Back up all content you want to keep before formatting the mass memory. All content on it is permanently deleted.


- 1 Select  > **Files**.
- 2 Select and hold the mass memory, then select **Format**.

Do not format the mass memory using PC software, because it may cause degraded performance.

You can use Nokia Suite to back up your content to a compatible computer. Digital rights management (DRM) technologies may prevent some backup content from being restored. For more info about DRM used for your content, contact your service provider.


Format a memory card

Want to delete all content from your memory card? When you format a memory card, all the data on it is deleted.

- 1 Select  > **Files**.
- 2 Select and hold the memory card, and from the pop-up menu, select **Format**.

Password protect your memory card

Want to protect the memory card against unauthorised use? You can set a password to protect the data.

- 1 Select  > **Files**.
- 2 Select and hold the memory card, and from the pop-up menu, select **Set password**.
- 3 Enter a password.
Keep the password secret and in a safe place, separate from the memory card.

Free up phone memory

Do you need to increase the available phone memory, so you can install more apps or add more content?

You can delete the following if no longer needed:

- Text, multimedia, and mail messages
- Contact entries and details
- Apps
- Installation files (.sis or .sisx) for installed apps
- Music, photos, or videos

Copy content you want to keep to the mass memory, to a compatible memory card (if available), or to a compatible computer.

Manage applications

About applications

 Select  > **Settings and Installations**.

You can view details of installed applications, remove applications, and define installation settings.

You can install the following types of applications:

- Java™ ME applications that have the .jad or .jar file extension

- Applications, compatible with the Symbian operating system, that have the .sis or .sisx file extension
- Widgets that have the .wgz file extension

Only install applications that are compatible with your phone.

Remove an app from your phone

You can remove installed apps that you no longer want to keep or use, to increase the amount of available memory.

Select  > **Settings and Installations.**

- 1 Select **Already installed.**
- 2 Select and hold the app to remove, then select **Remove.**

If you remove an app, you can only reinstall it if you have the original installation file or a full backup of the removed app. You may not be able to open files created with a removed app.

If an installed app depends on a removed app, the installed app may stop working. For details, see the user documentation of the installed app.

The installation files may use large amounts of memory and prevent you from storing other files. Use Nokia Suite to back up your installation files to a compatible computer, then use the file manager to remove the files from your phone memory.

Synchronise content

About Sync

 Select  > **Settings > Connectivity > Data transfer > Sync.**

Would you like to have your calendar, notes, and other content backed up and at hand, whether you are sitting by your computer or on the go with your phone? You can synchronise your contacts, notes, and other content between your phone and a remote server. After synchronising, you have a backup of your important data on the server.



Sync content between your phone and a remote server

Sync important content between your phone and a remote server to make a copy you can access from anywhere.


Select  > **Settings and Connectivity** > **Data transfer** > **Sync**.

You may receive sync settings as a configuration message from your network service provider. The sync settings are saved as a sync profile. When you open the app, the default or last used sync profile is shown.

Include or exclude content types

Select a content type.

Sync the content

Select  > **Sync now**.

Tip: To sync content between your phone and Nokia services, use the Nokia Sync app.

About Nokia Sync

 Select  > **Nokia Sync**.

You can sync contacts, calendar events, and notes between your phone and Nokia services. This way you always have a backup of your important content. To use Nokia Sync, you need a Nokia account. If you don't have an account, access a Nokia service – you are asked if you want to create one.

If you use Nokia Sync to automatically sync your contacts with Nokia services, do not allow syncing with any other service, such as Mail for Exchange, as there may be conflicts.

Copy contacts or pictures between phones

You can synchronise and copy contacts, pictures, and other content between two compatible Nokia phones, free of charge, using Bluetooth.

Select  > **Settings** > **Connectivity** > **Data transfer** > **Phone switch**.

- 1 Select from the following:



— Copy content from another phone.



— Copy content to another phone.




— Synchronise content between two phones.

- 2 Select the phone you want to connect to, and pair the phones. Bluetooth needs to be activated in both phones.
- 3 If the other phone requires a passcode, enter the passcode. The passcode, which you can define yourself, must be entered in both phones. The passcode in some phones is fixed. For details, see the user guide of the other phone.
The passcode is valid only for the current connection.
- 4 Select the content and **OK**.

Protect your phone

Set your phone to lock automatically

Want to protect your phone against unauthorised use? Create a security code, and set your phone to lock itself automatically when you're not using it.

- 1 Select  > **Settings** > **Phone** > **Phone management and Security settings** > **Phone and SIM card**.
- 2 Select **Phone autolock period** > **User defined**, then set how long before the phone locks itself.
- 3 Create a security code using at least 4 characters. You can use numbers, symbols, and upper and lower case letters.

Tip: To type in letters or symbols, press and hold #.

Keep the security code secret and in a safe place separate from your phone. If you forget the security code and your phone is locked, your phone will require service. Additional charges may apply, and all the personal data in your phone may be deleted. For more info, contact Nokia Care or your phone dealer.

Lock your phone manually

On the home screen, press the power key , select **Lock phone**, then type in the security code.

Unlock your phone


Slide the lock key, type in the security code, then select **OK**.

If the lock key is out of reach, press the menu key, then select **Unlock**.

Lock your phone remotely

Forgot your phone at work and want to lock it to prevent unauthorised use? You can lock your phone remotely using a predefined text message. You can also lock the memory card remotely.

Enable remote locking

- 1 Select  > **Settings** > **Phone** > **Phone management and Security settings** > **Phone and SIM card** > **Remote phone locking** > **Enabled**.
- 2 Enter the text message content. It can be 5-20 characters, and both upper and lower case letters can be used.
- 3 Enter the same text again to verify it.
- 4 Enter the lock code.


Send the lock message

To lock the phone remotely, write the predefined text, and send it to your phone as a text message.

To unlock your phone, you need the lock code.

Encrypt your data

Want to protect your data against unauthorised use? You can encrypt data on your phone using an encryption key.

Select  > **Settings** > **Phone** > **Phone management** > **Security settings** > **Encryption**.

It may take several minutes to encrypt or decrypt your data. During the encryption process, do not:

- Use your phone unless you have to
- Switch your phone off
- Remove the battery

If you haven't set your phone to lock itself automatically when not in use, you are prompted to do so when you encrypt your data for the first time.

Encrypt the phone memory

Select **Encryption on**.


Decrypt the phone memory

Select **Encryption off**.

Prepare your phone for recycling

If you buy a new phone, or otherwise want to dispose of your phone, Nokia recommends that you recycle your phone. Beforehand, remove all personal information and content from your phone.

Remove all content

- 1 Back up the content you want to keep to a compatible memory card or to a compatible computer.
- 2 Close all active connections and calls.
- 3 Select  > **Settings and Phone** > **Phone management** > **Factory settings** > **Delete data and restore**.
- 4 If prompted, enter the security code.
- 5 Your phone switches off and then on again. Check carefully that all your personal content, such as contacts, pictures, music, videos, notes, messages, mails, presentations, games and other installed applications have been removed.
Content and information stored on the memory card or SIM card is not removed.

Remember to remove your memory and SIM card from the phone.

Connectivity

Internet connections

Define how your phone connects to the internet

Your phone automatically checks for and connects to an available known network when a network connection is needed. Selection is based on the connection settings, unless there are application-specific settings applied.

Select  > **Settings and Connectivity** > **Settings**.

Use a mobile data connection

Select **Mobile data** > **On**.

Use a mobile data connection when abroad

Select **Allow mobile data usage** > **Worldwide**.

Using a mobile data connection to connect to the internet when abroad can raise data transfer costs substantially.

You can also set the phone to use a mobile data connection only when in your home network or home country.

Use a Wi-Fi connection only

Select **Mobile data** > **Off**.

An access point can be a mobile data connection or a Wi-Fi connection.

You can collect access points in a destination list, and rearrange the priority order within the list.

Example: If a Wi-Fi access point is ranked above a mobile data access point in a destination list, the phone will always try to first connect to the Wi-Fi access point, only connecting to the mobile data access point if the Wi-Fi network is not available.

Add a new access point to a destination list


Select **Network destinations** > **Access point**.

Change the priority of an access point in the internet destination list

- 1 Select **Network destinations** > **Internet**.
- 2 Select and hold an access point, and from the pop-up menu, select **Change priority**.
- 3 Tap the position in the list to move the access point to.

Keep track of your data traffic

To avoid surprises with mobile data costs, you can set your phone to notify you or close the mobile data connection when you have transferred a certain amount of data using your mobile data connection.

- 1 Select  > **Settings**.
- 2 Select **Connectivity** > **Mobile data tracker** > **Data allowance**.
- 3 Select **Define in megabytes** or **Define in gigabytes**, then type in the limit in the field.
- 4 Select **When allowance reached**, then select **Show warning** or **Switch mobile data off**.


The limit is phone-specific. If you use your SIM in another phone, you need to set the limits in that phone.

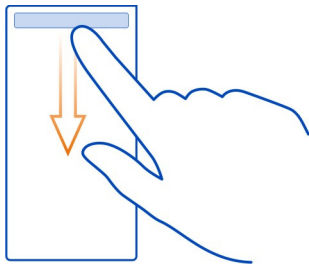
Your network service provider may count mobile data use differently than your phone does. For info about data costs, contact your network service provider.



Wi-Fi

About Wi-Fi connections


Select  > **Settings and Connectivity** > **Wi-Fi**.


Tip: You can also manage your connections in the status menu. Swipe down from the top of the screen, then select **Wi-Fi**. If Wi-Fi is not shown, select .



Tip: You can add a Wi-Fi widget  to the home screen. To quickly switch the Wi-Fi feature on or off, select the switch in the widget. To open the Wi-Fi app, select  in the widget. The Wi-Fi feature needs to be switched on.

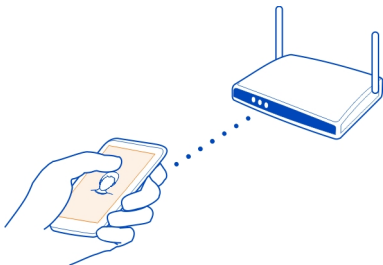
The Wi-Fi app shows a list of available networks and helps you connect to a Wi-Fi network.


 **Important:** Use encryption to increase the security of your Wi-Fi connection. Using encryption reduces the risk of others accessing your data.

 **Note:** Using Wi-Fi may be restricted in some countries. For example, in France, you are only allowed to use Wi-Fi indoors. After 1 July 2012, the restriction on outdoor usage of Wi-Fi in France is withdrawn by the EU. For more information, contact your local authorities.


Connect to a Wi-Fi network at home

To help save data costs, connect to your home Wi-Fi network when you are at home and want to browse the web on your phone.




- 1 To open the status menu, swipe down from the top of the screen. If Wi-Fi is not shown, select .
- 2 Select **Wi-Fi** and your home Wi-Fi network. If your home Wi-Fi is secured, type in the passcode. If your home Wi-Fi is hidden, select **Other (hidden network)**, then write the network name (service set identifier, SSID).

Close the Wi-Fi connection


Swipe down from the top of the screen, then select .

Connect to a Wi-Fi network on the move

Connecting to a Wi-Fi network is a handy way of accessing the internet when not at home. Connect to public Wi-Fi networks in public places, such as a library or internet café.

- 1 To open the status menu, swipe down from the top of the screen. If Wi-Fi is not shown, select .
- 2 Select **Wi-Fi** and the connection you want to use.

Close the Wi-Fi connection

Swipe down from the top of the screen, then select .

VPN connections

Select  > **Settings and Connectivity** > **Settings** > **VPN**.

You need a virtual private network (VPN) connection to, for example, browse your company intranet or access your work mail remotely.

VPN policies define how data is encrypted and how your company authenticates your phone. To configure the VPN client, certificates, and policies, contact your company's

IT department. After installing a policy, a VPN connection method is automatically added to an intranet destination.

For more info, search for mobile VPN at www.nokia.com/support.

! Important: The existence of a certificate considerably reduces risks involved in remote connections and software installation. To benefit from increased security, certificates must be used correctly, and they must be correct, authentic, or trusted. Certificates have a restricted lifetime. If they have expired or are invalid, check that the current date and time in your device are correct.

Before modifying any certificate settings, you must trust the owner of the certificate and that the certificate does belong to the listed owner.

NFC

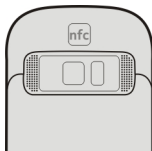
About NFC

Near Field Communication (NFC) makes connecting and sharing easy and fun. Nokia phones and accessories that support NFC are connected wirelessly when you touch them together.

With NFC, you can:

- Share your own content between two compatible phones that support NFC.
- Connect to compatible Bluetooth accessories that support NFC, such as a headset or a wireless loudspeaker.
- Touch tags to get more content for your phone or to access online services.
- Play multi-player games against other owners of compatible phones that support NFC.

The NFC area is on the back of your phone, above the camera. Touch other phones or accessories with the NFC area.



You can use NFC when the phone screen is on.

For more info, watch the NFC tutorial videos on your phone.

Tip: You can download more content supported by NFC from Nokia Store.

Activate NFC

Select  > **Settings and Connectivity** > **NFC** > **NFC** > **On**.

Connect to a Bluetooth accessory using NFC

Touch the NFC area of the accessory with the NFC area of your phone, and select **Yes**.

**Disconnect the accessory**

Touch the NFC area of the accessory again.

For more information, see the user guide of the accessory.

Send a photo or other content to another phone that supports NFC

You can share your own photos, videos, contacts, and My Card when you touch another compatible phone that supports NFC.

Share a photo

- 1 Select the photo in Gallery.
- 2 Touch the NFC area of the other phone with the NFC area of your phone. The photo is sent using Bluetooth.



The location of the NFC area may vary. For more info, see the user guide of the other phone.

Access an online service using NFC

When you touch an NFC tag that contains a web address with the NFC area of your phone, the website opens in your phone web browser.



Tip: NFC tags can also contain information such as a phone number or business card. When you see a phone number in an advertisement that supports NFC, to call the number, touch the tag.



Play a game with a friend using NFC

Want to have fun playing games with a friend? If you and a friend both have a compatible phone that supports NFC, you can play games against each other.

- 1 Open a game that supports NFC.
- 2 Follow the in-game instructions.

Bluetooth

About Bluetooth

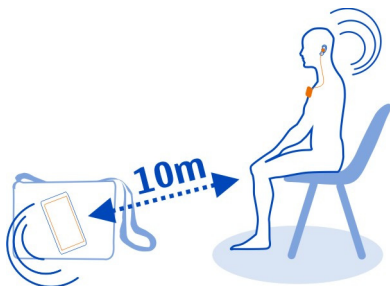
 Select  > **Settings** > **Connectivity** > **Bluetooth**.

You can connect wirelessly to other compatible devices, such as phones, computers, headsets, and car kits.


You can use the connection to send items from your phone, copy files from your compatible PC, and print files with a compatible printer.

Since devices with Bluetooth wireless technology communicate using radio waves, they do not need to be in direct line-of-sight. However, they must be within 10 metres

(33 feet) of each other, although the connection may be subject to interference from obstructions such as walls or from other electronic devices.



When your phone is locked, only connections to authorised devices are possible.

Tip: You can also manage your Bluetooth connections in the status menu. To open the status menu, swipe down from the notification area, then select **Bluetooth**. If Bluetooth is not displayed, select .




Tip: You can add a Bluetooth widget to the home screen. To quickly switch Bluetooth on or off, select the widget.

Operating the device in hidden mode is a safer way to avoid malicious software. Do not accept Bluetooth connection requests from sources you do not trust. You can also switch the Bluetooth function off when you are not using it.

Connect to a wireless headset

With a wireless headset you can answer a call even if your phone is not directly at hand, and you can have your hands free, for example, to continue working at your computer during a call. Wireless headsets are available separately.

Select  > **Settings** > **Connectivity** > **Bluetooth**.

- 1 To activate Bluetooth, select **Bluetooth** > **On**.
- 2 Switch the headset on.
- 3 Open the Paired devices tab  .
- 4 Select the headset.
If the headset is not displayed in the list, to search for it, select  > **New paired device**.
- 5 You may need to enter a passcode. For details, see the user guide of the headset.

Send a picture or other content to another device using Bluetooth

You can use Bluetooth to send pictures, videos, business cards, calendar entries, and other content to your friend's compatible devices and to your computer.

You can have several Bluetooth connections active at a time. For example, if you are connected to a compatible headset, you can also send files to another compatible device at the same time.

- 1 Select and hold the item, for example, a picture. From the pop-up menu, select **Send > Via Bluetooth**.
- 2 Select the device to connect to. If the desired device is not displayed, to search for it, select **More devices**. When searching, Bluetooth devices within range are displayed.
- 3 If the other device requires a passcode, enter the passcode. The passcode, which you can define yourself, must be entered in both devices. The passcode in some devices is fixed. For details, see the user guide of the other device.

The passcode is valid only for the current connection.

Connect to a car kit using remote SIM mode

With remote SIM mode, a compatible car kit can use the SIM card of your phone.

Select  > **Settings** > **Connectivity** > **Bluetooth**.

Before remote SIM mode can be activated, your phone and accessory must be paired. Initiate the pairing from the car kit accessory.

- 1 To activate Bluetooth, select **Bluetooth > On**.
- 2 To activate remote SIM mode, select **Remote SIM mode > On**.
- 3 Activate Bluetooth in the car kit accessory.

When remote SIM mode is activated, **Remote SIM mode** is displayed on the home screen. The connection to the wireless network is closed, and you cannot use SIM card services or features that require cellular network coverage.

To make or receive calls when in remote SIM mode, you need to have a compatible accessory, such as a car kit, connected to your device.

Your device will only allow emergency calls in this mode.

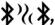
Deactivate remote SIM mode

Press the power key, and select **Exit remote SIM mode**.

Block a device

You can prevent devices from creating a Bluetooth connection to your phone.

Select  > **Settings** > **Connectivity** > **Bluetooth**.

Open the Paired devices tab , select and hold the device you want to block, and from the pop-up menu, select **Block**.

Remove a device from the blocked devices list

Open the Blocked devices tab , select and hold the device you want to remove from the list, and from the pop-up menu, select **Delete**.

If you reject a pairing request from another device, you are asked if you want to add the device to the list of blocked devices.

Protect your phone

When Bluetooth is activated in your phone, you can control who can find and connect to your phone.

Select  > **Settings** > **Connectivity** > **Bluetooth**.


Prevent others from detecting your phone

Select **My phone's visibility** > **Hidden**.

When your phone is hidden, others cannot detect it. However, paired devices can still connect to your phone.

Switch Bluetooth off

Select **Bluetooth** > **Off**.


Tip: To quickly switch Bluetooth off, swipe down from the top of the screen, then select .


Do not pair with or accept connection requests from an unknown device. This helps to protect your phone from harmful content.

USB data cable

Copy a picture or other content between your phone and computer

You can use a USB data cable to back up and copy pictures, videos, and other content between your phone and your computer.

- 1 To make sure that Media transfer is set as the USB mode, select  > **Settings** and **Connectivity** > **USB** > **Media transfer**.

- 2 Use a compatible USB  data cable to connect your phone to your compatible computer.


The phone is displayed as a portable device on your computer. If Media transfer mode does not work on your computer, use Mass storage mode instead.

- 3 Use the file manager of the computer to copy the content.

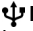
Change the USB mode

For best results when copying content or synchronising your phone with your computer, activate the appropriate USB mode when using a USB data cable to connect to various devices.

- 1 Use a compatible USB cable to connect your phone to your computer.
- 2 On your phone, swipe down from the notification area.
- 3 Select **USB** and from the following:


 **Nokia Suite** — Connect your phone to a compatible computer that has Nokia Suite installed. In this mode, you can synchronise your phone with Nokia Suite and use other Nokia Suite features.


This mode is activated automatically when you open the Nokia Suite application.

 **Mass storage** — Connect your phone to a compatible computer that does not have Nokia Suite installed. Your phone is recognised as a USB flash memory. You can also connect your phone to other devices, such as a home or car stereo, to which you can connect a USB drive.

While connected to a computer in this mode, you may not be able to use some of the phone applications.

The memory card and mass memory in your phone cannot be accessed by the other device.

 **Media transfer** — Connect your phone to a compatible computer that does not have Nokia Suite installed. Music protected by digital rights management (DRM) must be transferred in this mode. Some home entertainment systems and printers can also be used in this mode.

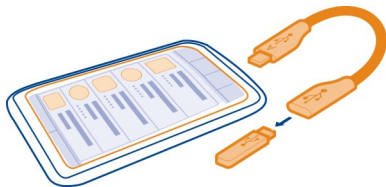
 **Use phone as modem** — Connect your phone to a compatible computer, and use the phone as a wireless modem. The computer connects to the internet automatically.

Connect a USB mass storage device

You can use a USB On-The-Go (OTG) adapter to connect your phone to a compatible USB memory stick or hard drive. For example, you can save your photos on a USB memory stick without needing to connect to a PC.

Connect a memory stick

- 1 Connect the micro-USB end of the USB OTG adapter (available separately) to the micro-USB connector in your phone.
- 2 Connect a memory stick to the USB OTG adapter.



The Files app opens, and the memory stick is shown as a mass memory.

Copy a file

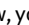

In Files, select and hold the file you want to copy, then select the option you want and the memory and folder you want to copy to.

If you connect a hard drive that needs more power than your phone can supply, an error message is shown. You need to connect an external power source to the hard drive.

Close a network connection

If several apps are using an internet connection, you can use the Connection manager app to close some or all network connections.

Select  > **Settings** and **Connectivity** > **Connection manager**.

In the active data connections view, you can see your current network connections.  is a mobile data connection, and  is a Wi-Fi connection.

Select and hold the connection, then select **Disconnect**.

View details for a connection


Select the connection.

Details, such as the amount of transferred data and connection duration, are shown.

Tip: In most views, to see what connections are active, swipe down from the notification area.

Find more help

Support

When you want to learn more about how to use your phone, or if you're unsure how your phone should work, read the user guide in your phone. Select  > **User guide**.

For support videos, go to www.youtube.com/user/NokiaSupportVideos.

If you have an issue, do the following:

- Reboot your phone. Switch off the phone, and remove the battery. After about a minute, replace the battery, and switch on the phone.
- Update your phone software
- Restore the original factory settings

If your issue remains unsolved, contact Nokia for repair options. Before sending your phone for repair, always back up your data, as all personal data in your phone may be deleted.

Access codes

PIN or PIN2 code (4-8 digits)	<p>These protect your SIM against unauthorised use or are required to access some features.</p> <p>You can set your phone to ask for the PIN code when you switch it on.</p> <p>If not supplied with your card or you forget the codes, contact your service provider.</p> <p>If you type in the code incorrectly three times in a row, you need to unblock the code with the PUK or PUK2 code.</p>
PUK or PUK2 code (8 digits)	<p>These are required to unblock a PIN or PIN2 code.</p> <p>If not supplied with your SIM, contact your service provider.</p>
IMEI number (15 digits)	<p>This is used to identify valid phones in the network. The number can also be used to block, for example, stolen phones. You may also need to give the number to Nokia Care services.</p> <p>To view your IMEI number, dial *#06#.</p>
Lock code (security code)	This helps you protect your phone against unauthorised use.

(min. 4 digits or characters)

You can set your phone to ask for the lock code that you define.

Keep the code secret and in a safe place, separate from your phone.

If you forget the code and your phone is locked, your phone will require service. Additional charges may apply, and all the personal data in your phone may be deleted.

For more information, contact Nokia Care or your phone dealer.

Product and safety information

Network services and costs

Your device is approved for use on the GSM 850, 900, 1800, 1900 MHz networks, and WCDMA 850, 900, 1700, 1900, 2100 MHz networks. To use the device, you need a subscription with a service provider.

Using network services and downloading content to your device requires a network connection and may result in data traffic costs. Some product features require support from the network, and you may need to subscribe to them.

Take care of your device

Handle your device, battery, charger and accessories with care. The following suggestions help you protect your warranty coverage.

- Keep the device dry. Precipitation, humidity, and all types of liquids or moisture can contain minerals that corrode electronic circuits. If your device gets wet, remove the battery, and allow the device to dry.
- Do not use or store the device in dusty or dirty areas. Moving parts and electronic components can be damaged.
- Do not store the device in high temperatures. High temperatures can shorten the life of the device, damage the battery, and warp or melt plastics.
- Do not store the device in cold temperatures. When the device warms to its normal temperature, moisture can form inside the device and damage electronic circuits.
- Do not attempt to open the device other than as instructed in the user guide.
- Unauthorised modifications may damage the device and violate regulations governing radio devices.
- Do not drop, knock, or shake the device. Rough handling can break internal circuit boards and mechanics.
- Only use a soft, clean, dry cloth to clean the surface of the device.
- Do not paint the device. Paint can clog moving parts and prevent proper operation.
- Switch off the device and remove the battery from time to time for optimum performance.
- Keep your device away from magnets or magnetic fields.
- To keep your important data safe, store it in at least two separate places, such as your device, memory card, or computer, or write down important information.

During extended operation, the device may feel warm. In most cases, this is normal. If you suspect the device is not working properly, take it to the nearest authorised service facility.

Recycle

Always return your used electronic products, batteries, and packaging materials to dedicated collection points. This way you help prevent uncontrolled waste disposal and promote the recycling of materials. Check how to recycle your Nokia products at www.nokia.com/recycling.

Crossed-out wheeled-bin symbol



The crossed-out wheeled-bin symbol on your product, battery, literature, or packaging reminds you that all electrical and electronic products, batteries, and accumulators must be taken to separate collection at the end of their working life. This requirement applies in the European Union. Do not dispose of these products as unsorted municipal waste. For more environmental information, see the product Eco profile at www.nokia.com/ecoprofile.

About Digital Rights Management

When using this device, obey all laws and respect local customs, privacy and legitimate rights of others, including copyrights. Copyright protection may prevent you from copying, modifying, or transferring pictures, music, and other content.

Content owners may use different types of digital rights management (DRM) technologies to protect their intellectual property, including copyrights. This device uses various types of DRM software to access DRM-protected content. With this device you can access content protected with WM DRM 10 and OMA DRM 2.0. If certain DRM software fails to protect the content, content owners may ask that such DRM software's ability to access new DRM-protected content be revoked. Revocation may also prevent renewal of such DRM-protected content already in your device. Revocation of such DRM software does not affect the use of content protected with other types of DRM or the use of non-DRM-protected content.

Digital rights management (DRM) protected content comes with an associated licence that defines your rights to use the content.

If your device has OMA DRM-protected content, to back up both the licences and the content, use the backup feature of Nokia Suite.

Other transfer methods may not transfer the licences which need to be restored with the content for you to be able to continue the use of OMA DRM-protected content after the device memory is formatted. You may also need to restore the licences if the files on your device become corrupted.

Some licences may be connected to a specific SIM card, and the protected content can be accessed only if the SIM card is inserted in the device.

Batteries and chargers

Battery and charger information

Your device is intended for use with a BL-5K rechargeable battery. Nokia may make additional battery models available for this device. Always use original Nokia batteries.

This device is intended for use when supplied with power from the following chargers: AC-15. The exact Nokia charger model number may vary depending on the plug type, identified by E, X, AR, U, A, C, K, B, or N.

The battery can be charged and discharged hundreds of times, but it will eventually wear out. When the talk and standby times are noticeably shorter than normal, replace the battery.

Battery safety

Always switch the device off and disconnect the charger before removing the battery. When you unplug a charger or an accessory, hold and pull the plug, not the cord.

When your charger is not in use, unplug it from the electrical plug and the device. Do not leave a fully charged battery connected to a charger, as overcharging may shorten the battery's lifetime. If left unused, a fully charged battery will lose its charge over time.

Always keep the battery between 15°C and 25°C (59°F and 77°F). Extreme temperatures reduce the capacity and lifetime of the battery. A device with a hot or cold battery may not work temporarily.

Accidental short-circuiting can happen when a metallic object touches the metal strips on the battery, for example, if you carry a spare battery in your pocket. Short-circuiting may damage the battery or the connecting object.

Do not dispose of batteries in a fire as they may explode. Dispose of batteries according to local regulations. Recycle when possible. Do not dispose as household waste.


Do not dismantle, cut, open, crush, bend, puncture, or shred cells or batteries. If a battery leaks, do not let battery liquid touch skin or eyes. If this happens, immediately flush the affected areas with water, or seek medical help.

Do not modify, remanufacture, attempt to insert foreign objects into the battery, or immerse or expose it to water or other liquids. Batteries may explode if damaged.

Use the battery and charger for their intended purposes only. Improper use, or use of unapproved batteries or incompatible chargers may present a risk of fire, explosion, or other hazard, and may invalidate any approval or warranty. If you believe the battery or charger is damaged, take it to a service centre for inspection before continuing to use it. Never use a damaged battery or charger. Only use the charger indoors.

Additional safety information

Make an emergency call

- 1 Make sure the device is switched on.
- 2 Check for adequate signal strength. You may also need to do the following:
 - Insert a SIM card.
 - Deactivate call restrictions you have activated for your device, such as call barring, fixed dialling, or closed user group.
 - Make sure the offline or flight profile is not activated.
 - If the device screen and keys are locked, unlock them.
- 3 Press the end key repeatedly, until the home screen is displayed.
- 4 To open the dialler, select 
- 5 Enter the official emergency number for your present location. Emergency call numbers vary by location.
- 6 Press the call key.
- 7 Give the necessary information as accurately as possible. Do not end the call until given permission to do so.

When you switch your device on for the first time, you are asked to create your Nokia account. To make an emergency call during the account setup, press the call key.



Important: Activate both cellular and internet calls, if your device supports internet calls. The device may attempt to make emergency calls both through cellular networks and through your internet call service provider. Connections in all conditions cannot be guaranteed. Never rely solely on any wireless device for essential communications like medical emergencies.

Small children

Your device and its accessories are not toys. They may contain small parts. Keep them out of the reach of small children.

Medical devices

Operation of radio transmitting equipment, including wireless phones, may interfere with the function of inadequately protected medical devices. Consult a physician or the manufacturer of the medical device to determine whether they are adequately shielded from external radio frequency energy.

Implanted medical devices

Manufacturers of medical devices recommend a minimum separation of 15.3 centimetres (6 inches) between a wireless device and an implanted medical device, such as a pacemaker or implanted cardioverter defibrillator, to avoid potential interference with the medical device. Persons who have such devices should:

- Always keep the wireless device more than 15.3 centimetres (6 inches) from the medical device.
- Not carry the wireless device in a breast pocket.
- Hold the wireless device to the ear opposite the medical device.
- Turn the wireless device off if there is any reason to suspect that interference is taking place.
- Follow the manufacturer directions for the implanted medical device.

If you have any questions about using your wireless device with an implanted medical device, consult your health care provider.

Hearing



Warning:

When you use the headset, your ability to hear outside sounds may be affected. Do not use the headset where it can endanger your safety.

Some wireless devices may interfere with some hearing aids.

Nickel



Note: The surface of this device does not contain nickel in the platings. The surface of this device contains stainless steel.

Protect your device from harmful content

Your device may be exposed to viruses and other harmful content. Take the following precautions:

- Be cautious when opening messages. They may contain malicious software or otherwise be harmful to your device or computer.
- Be cautious when accepting connectivity requests, browsing the internet, or downloading content. Do not accept Bluetooth connections from sources you do not trust.
- Only install and use services and software from sources that you trust and that offer adequate security and protection.
- Install antivirus and other security software on your device and any connected computer. Only use one antivirus application at a time. Using more may affect performance and operation of the device and/or computer.
- If you access preinstalled bookmarks and links to third party internet sites, take the appropriate precautions. Nokia does not endorse or assume liability for such sites.

Operating environment

This device meets radio frequency exposure guidelines in the normal use position at the ear or at least 1.5 centimetres (5/8 inch) away from the body. Any carry case, belt clip, or holder for body-worn operation should not contain metal and should position the device the above-stated distance from your body.

To send data files or messages requires a quality connection to the network. Data files or messages may be delayed until such a connection is available. Follow the separation distance instructions until the transmission is completed.

Vehicles

Radio signals may affect improperly installed or inadequately shielded electronic systems in motor vehicles such as electronic fuel injection, electronic antilock braking, electronic speed control, and air bag systems. For more info, check with the manufacturer of your vehicle or its equipment.

Only qualified personnel should install the device in a vehicle. Faulty installation or service may be dangerous and may invalidate your warranty. Check regularly that all wireless device equipment in your vehicle is mounted and operating properly. Do not store or carry flammable liquids, gases, or explosive materials in the same compartment as the device, its parts, or accessories. Remember that air bags inflate with great force. Do not place your device or accessories in the air bag deployment area.

Potentially explosive environments

Switch off your device in any area with a potentially explosive atmosphere, for example near gas pumps at service stations. Sparks in such areas could cause an explosion or fire resulting in bodily injury or death. Observe restrictions in fuel service stations, storage, and distribution areas; chemical plants; or where blasting operations are in progress. Areas with a potentially explosive atmosphere are often, but not always, clearly marked. They include areas where you would be advised to turn off your vehicle engine, below deck on boats, chemical transfer or storage facilities and where the air contains chemicals or particles such as grain, dust, or metal powders. You should check with the manufacturers of vehicles using liquefied petroleum gas (such as propane or butane) to determine if this device can be safely used in their vicinity.

Certification information (SAR)

This mobile device meets guidelines for exposure to radio waves.

Your mobile device is a radio transmitter and receiver. It is designed not to exceed the limits for exposure to radio waves recommended by international guidelines. These guidelines were developed by the independent scientific organisation ICNIRP and include safety margins designed to assure the protection of all persons, regardless of age and health.

The exposure guidelines for mobile devices employ a unit of measurement known as the Specific Absorption Rate or SAR. The SAR limit stated in the ICNIRP guidelines is 2.0 watts/kilogram (W/kg) averaged over 10 grams of tissue. Tests for SAR are conducted using standard operating positions with the device transmitting at its highest certified power level in all tested frequency bands. The actual SAR level of an operating device can be below the maximum value because the device is designed to use only the power required to reach the network. That amount changes depending on a number of factors such as how close you are to a network base station.

The highest SAR value under the ICNIRP guidelines for use of the device at the ear is 0.73 W/kg.

Use of device accessories may result in different SAR values. SAR values may vary depending on national reporting and testing requirements and the network band. Additional SAR information may be provided under product information at www.nokia.com.

Copyright and other notices

DECLARATION OF CONFORMITY

CE 04340

Hereby, NOKIA CORPORATION declares that this RM-675 product is in compliance with the essential requirements and other relevant provisions of Directive 1999/5/EC. A copy of the Declaration of Conformity can be found at <http://www.nokia.com/global/declaration>.

For products placed on the market before 1 July 2012, the alert symbol is applicable to indicate the restrictions on use in France for the WLAN functionality. In accordance with EU Decision 2009/812/EC, after 1 July 2012, the alert symbol is no longer applicable for the WLAN functionality within this product and, hence, can be disregarded even if it is still present on the product.

© 2012 Nokia. All rights reserved.

Nokia, Nokia Connecting People, and Nokia Original Accessories logo are trademarks or registered trademarks of Nokia Corporation. Nokia tune is a sound mark of Nokia Corporation. Other product and company names mentioned herein may be trademarks or tradenames of their respective owners.

Reproduction, transfer, distribution, or storage of part or all of the contents in this document in any form without the prior written permission of Nokia is prohibited. Nokia operates a policy of continuous development. Nokia reserves the right to make changes and improvements to any of the products described in this document without prior notice.



Oracle and Java are registered trademarks of Oracle and/or its affiliates.

The Bluetooth word mark and logos are owned by the Bluetooth SIG, Inc. and any use of such marks by Nokia is under license.

This product is licensed under the MPEG-4 Visual Patent Portfolio License (i) for personal and noncommercial use in connection with information which has been encoded in compliance with the MPEG-4 Visual Standard by a consumer engaged in a personal and noncommercial activity and (ii) for use in connection with MPEG-4 video provided by a licensed video provider. No license is granted or shall be implied for any other use. Additional information, including that related to promotional, internal, and commercial uses, may be obtained from MPEG LA, LLC. See <http://www.mpegla.com>.

To the maximum extent permitted by applicable law, under no circumstances shall Nokia or any of its licensors be responsible for any loss of data or income or any special, incidental, consequential or indirect damages howsoever caused.

The contents of this document are provided "as is". Except as required by applicable law, no warranties of any kind, either express or implied, including, but not limited to, the implied warranties of merchantability and fitness for a particular purpose, are made in relation to the accuracy, reliability or contents of this document. Nokia reserves the right to revise this document or withdraw it at any time without prior notice.

Reverse engineering of software in the device is prohibited to the extent permitted by applicable law. Insofar as this user guide contains any limitations on Nokia's representations, warranties, damages and liabilities, such limitations shall likewise limit any representations, warranties, damages and liabilities of Nokia's licensors.

The availability of products, features, applications and services may vary by region. For more information, contact your Nokia dealer or your service provider. This device may contain commodities, technology or software subject to export laws and regulations from the US and other countries. Diversion contrary to law is prohibited.

Nokia does not provide a warranty for or take any responsibility for the functionality, content, or end-user support of third-party applications provided with your device. By using an application, you acknowledge that the application is provided as is. Nokia does not make any representations, provide a warranty, or take any responsibility for the functionality, content, or end-user support of third-party applications provided with your device.

The availability of Nokia services may vary by region.

FCC/INDUSTRY CANADA NOTICE

This device complies with part 15 of the FCC rules and Industry Canada licence-exempt RSS standard(s). Operation is subject to the following two conditions: (1) This device may not cause harmful interference, and (2) this device must accept any interference received, including interference that may cause undesired operation. Your device may cause TV or radio

interference (for example, when using a device in close proximity to receiving equipment). If you require assistance, contact your local service facility. Any changes or modifications not expressly approved by Nokia could void the user's authority to operate this equipment.

/Issue 3.1 EN

Index

A

access codes	124
alarm clock	95, 96
anniversaries	100
antennas	16
applications	22, 107
apps	35, 104, 108
audio messages	52, 53

B

backing up content	73, 106
barring calls	45
battery	126
— charging	12, 13
— inserting	9
— saving power	29
birthdays	100
blocking	
— devices	121
blogs	61
Bluetooth	118, 119, 120, 121
bookmarks	61
browser	
— See <i>web browser</i>	
business cards	50, 120

C

cable connection	72, 121, 122
cache memory	60
calculator	101
calendar	65, 97, 98, 99, 100
call waiting	38
calls	44
— conference	40
— emergency	127
— forwarding	44
— internet	43
— internet calls	42

— last dialled	43
— making	36, 38
— restricting	45
— video calls	39
camera	66
— location info	67
— recording videos	68
— sending photos	69
— sharing photos	69
— sharing videos	69
— taking photos	66, 67
charging the battery	12, 13, 126
chat services (IM)	103
clock	95, 96, 97
connectivity	123
contacts	48, 51
— adding	48
— copying	14, 110
— editing	48
— favourites	49
— groups	51
— in social networks	63, 65
— pictures	50
— ringtones	50
— saving	48
— searching	36
— sending	50, 117, 120
— sync	51, 109
— widgets	34, 49
copying content	14, 72, 77, 79, 110, 121
copyright protection	80

D

data connections	123
— Bluetooth	118
— costs	113
— packet data	113
date and time	95, 96
decryption	111
device lock	110, 111
dictionary	102

downloads	35
— themes	32
Drive	
— changing views	85
— driving routes	84, 85
— map view	85
— navigating	84
— planning routes	86
— voice guidance	85
DRM (digital rights management)	80

E

e-mail	
See <i>mail</i>	
emergency calls	127
encryption	111
Exchange ActiveSync	56

F

factory settings, restoring	30
favourites	49
feeds, news	61
file management	105, 106, 107
flashlight	28
FM radio	82, 83
FM transmitter	81
forwarding calls	44

G

GPS (global positioning system)	92, 93
Guides	92

H

headset	17
help	17
home screen	21, 32, 33, 34, 49, 59

I

icons	26, 27
IM (instant messaging)	103
images	

See *photos*

IMEI number	124
inbox, messages	53
installing applications	107
internet	
See <i>web browser</i>	
internet calls	42, 43
internet connection	112

J

Java applications	107
-------------------	-----

K

key lock	15
keyboard	22
keyguard	15
keypad	24
keys and parts	7, 8

L

language settings	55
licences	80
location info	62, 64, 67
location information	92, 93, 100
lock code	110, 124
locking	
— keys	15
— phone	110, 111
— remotely	111
— screen	15
loudspeaker	16, 36

M

mail	55, 56, 59
— attachments	59
— creating	59
— mailbox	57
— reading and replying to	57
— sending	59
— setup	57
— widgets	59

mailbox	
— voice	44
Maps	83
— browsing	89
— changing views	91
— downloading maps	91
— driving routes	84
— Favourites	94
— finding locations	90
— guides	92
— navigating	84, 85, 87, 88
— positioning	92
— reporting	95
— saving places	94
— sharing locations	94
— sync	94
— traffic information	86
— viewing saved places	94
— voice guidance	88
— walking routes	87, 88
— weather	92
mass memory	106
meeting requests	59
meetings	98, 100
memory	105, 112
— clearing	107
memory card	11, 107
menus	35
message reader	55
messages	52, 53
— audio	53
— conversations	54
— sending	52, 53
Microsoft Communicator Mobile	103
MMS (multimedia message service)	52
movies	74
multimedia messages	52
multitasking	22
music	77, 78, 79, 81
— playlists	78
My Card	50

N

news feeds	61
NFC	116, 117, 118
NFC (Near Field Communication)	117, 118
noise cancellation	9
Nokia Mail	56
Nokia Music	79
Nokia services	51
Nokia Store	
— buying	35
— downloading	35
Nokia Suite	18, 79
Nokia support information	124
Nokia Sync	109
notes	102
notification light	27

O

office applications	101
offline profile	28

P

personalising your phone	31, 32, 33, 34, 35
phone	
— setup	14
phone lock	110, 111
Phone switch	14, 110
phonebook	
— See <i>contacts</i>	
photo editor	73
photographs	
— See <i>photos</i>	
photos	73
— copying	14, 72
— editing	73
— location info	67
— organising	72
— printing	74
— sending	69, 117

— sharing	64, 69, 72
— taking	66, 67
— viewing	70
— viewing on a TV	75
pictures	
— copying	110, 121
— sending	120
PIN codes	124
playlists	78
positioning info	64
positioning information	92, 93
powering on/off	13
printing	74
profiles	30, 31, 32
— creating	31
— offline	28
— personalising	31
Public Transport	88, 89
PUK codes	124

Q

Quickoffice	101
-------------	-----

R

radio	82, 83
RDS (radio data system)	83
recording	
— calls	43
— sounds	80
— videos	68
remote lock	110
remote locking	111
restoring settings	30
ringtones	30, 31, 37, 50

S

searching	28
— contacts	36
— radio stations	82, 83
security code	110, 124
sensor settings	37

settings	
— access points	112
— language	55
— restoring	30
sharing, online	64, 69, 72
shortcuts	18, 21, 34, 49
silent profile	31
SIM card	51
— inserting	9
slide show	74
SMS (short message service)	52
social networks	62, 63, 64, 65
software	107
software updates	103, 104, 105
speakerphone	16
speed dialling	41
status updates	64
support	17, 124
switching on/off	13
sync	51, 109
synchronisation	108

T

tasks	99
text input	22, 23, 24, 25
text messages	52
themes	32
time and date	95, 96
tones	
— personalising	31
touch screen	9, 19, 22, 24
transferring content	14, 72, 77, 79, 110, 121
turning on/off	13
TV	
— viewing photos and videos on	75

U

updates	
— apps	103, 104
— phone software	103, 104, 105

USB charging	12, 13
USB connection	72, 121, 122
user guide	17

V

video calls	39, 40
videos	76
— copying	14, 72, 77, 110, 121
— editing	73, 74
— location info	67
— playing	76
— recording	67, 68
— sending	69, 117, 120
— sharing	46, 47, 64, 69, 72
— watching	70
— watching on a TV	75
virtual keyboard	22
virtual keypad	24
voice calls	
See <i>calls</i>	
voice commands	42
volume control	16
VPN (virtual private network)	115

W

wallpaper	32
Weather	92
web browser	60, 62
— bookmarks	61
— browsing pages	60
— cache memory	60
web connection	112
web feeds	61
Wi-Fi	114, 115
widgets	33, 34, 49, 59
world clock	97
wrist strap	16

Z

zip files	103
-----------	-----